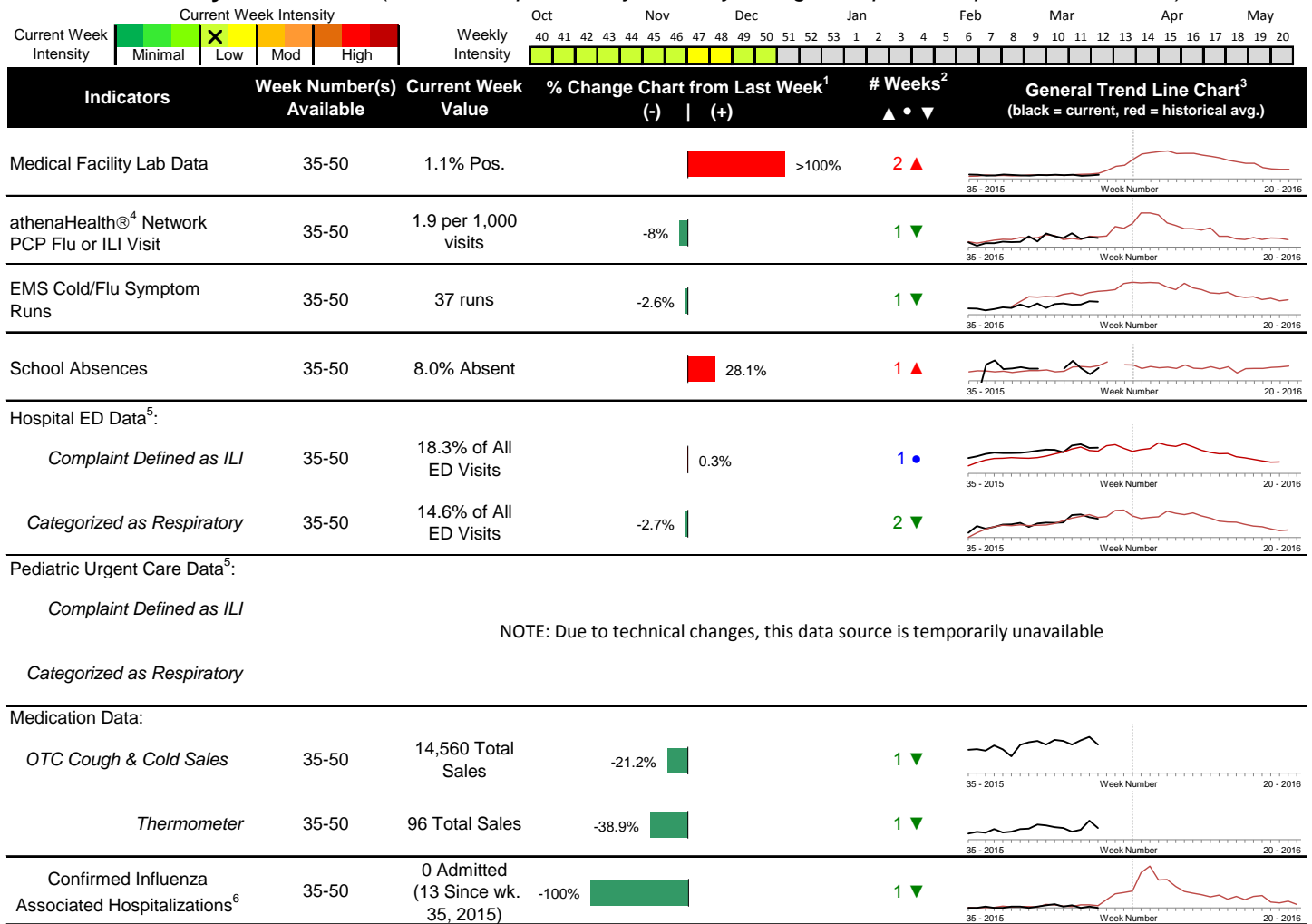


Highlights

- In week 50, individual local flu activity indicator trends were mixed. Overall, local flu intensity continues to be low.
- Geographic spread and local intensity designation (Click [here](#) for definitions) = SPORADIC, LOW
- Local medical facility labs reported 1,014 tests run with 11 (1.1%) positive results for week 50 of 2015. This is higher than last week's 0.5% and is lower than the weekly baseline.
- The percentage of ED visits for influenza-like-illness (ILI) was stable, while respiratory symptom visits decreased slightly compared to week 49. The percentage of ED visits for ILI is slightly above its baseline average for the week, while respiratory symptoms were slightly lower than its baseline average for the week.
- In week 50 of 2015, trends for all local over-the-counter medication sales tracked decreased (decrease in cough and cold, electrolyte, thermometer, chest-rub, pediatric anti-fever, adult anti-fever, and throat lozenge sales) compared to last week.
- Updated week 50 National influenza surveillance data was not available at the time of this report. Nationally in week 49, influenza activity increased slightly in the United States but remained low overall. Please [visit the CDC website for specific information](#) (National data is usually updated on Friday of each week).

Local Flu Activity Dashboard *(All data are preliminary and may change as updated reports are received.)*



Reportable Conditions (Cumulative Numbers as of Dec 22, 2015, 10:00 AM)	2010	2011	2012	2013	2014	2015 YTD
Pediatric Influenza Associated Death Reported by Year (based on date of death)	0	0	0	0	0	0
Influenza Associated Hospitalizations (IAH) Reported by Admission Year ⁶	35	266	394	300	939	535
IAH comparison by Season (October - May or Weeks 35 - 20)	2010-11	2011-12	2012-13	2013-14	2014-15	2015-16
Current season (2015-16) is from week 35 through 50.	284	95	512	486	1,017	13

¹Interpret with caution. Indicators with small numbers subject to large weekly percentage fluctuations.
²Number of weeks "▲" = Increase (>2%), "▼" = Decrease (>2%), "•" = Stable (-2% to +2%).
³Black line is current years data. Based on data availability, red line is historical average (excluding pandemic year).
⁴Data Source: Medical claims data from athenaHealth® (www.athenahealth.com). Rate of Flu or ILI visits to Franklin County, OH athenaHealth® network primary care practices/physicians.
⁵Franklin County, OH residents only (based on zipcode). NOTE: Excludes one hospital system included in the past due to technical changes affecting visit classification assignment and numbers.
⁶Confirmed cases only. Based on jurisdiction equal to Franklin County or City of Columbus and admission date available in ODRS.

CDC 122-Cities Mortality Reporting System: Pneumonia and Influenza (P&I) Mortality

In week 50 of 2015, 4.1% of all Columbus and Franklin County deaths were attributed to pneumonia and influenza. Updated National week 50 P&I mortality data was not available at the time of this report. Nationally in week 49, 6.0% of deaths reported were attributed to pneumonia and influenza. This national percentage was below the national epidemic threshold of 6.7% for week 49.

Influenza Morbidity and Influenza-Like Illness (ILI) Reports

In week 50, the preliminary local influenza and influenza-like-illness (ILI) visit rate to athenaHealth® providers (1.9 per 1,000 visits) decreased slightly compared to the previous week and is close to its baseline average for the week (Figure 1). The week 50 percentage of Emergency Department (ED) visits for ILI was stable compared to the previous week (Figure 3) and is slightly higher than the historic baseline for the week.

Updated week 50 US Outpatient Influenza-like Illness Surveillance Network (ILINet) figures were not available at the time of this report. Nationally, during week 49 of 2015, 1.9% of patient visits reported through ILINet were due to influenza-like illness (ILI). The percentage is below the national baseline of 2.1% for week 49.

Laboratory Surveillance

During week 50 of 2015, reporting Franklin County sentinel medical facility laboratories tested 1,014 specimens, with 11 (1.1%) positive (Figure 4). The total number of tests done by local reporting labs from week 35 of 2014 through week 50 of 2015 is 11,694 with 91 (0.78%) positives (63 type A, 24 type B, 4 both A and B, 0 type unknown).

Updated week 50 National lab figures were not available at the time of this report. Nationally in week 49 of 2015, clinical laboratories reported 12,525 specimens tested for influenza viruses, 208 (1.7%) of which were positive (117 type A, 91 type B). Public health laboratories reported testing 786 specimens, 41 of which were positive (30 type A – of which 17 were A(H1N1)pdm09, 11 were A/H3, and 2 were not subtyped; 11 type B – of which 4 were Yamagata lineage, 0 were Victoria lineage, and 7 where lineage was not performed). Please visit the CDC website for more information, including cumulative data since week 40.

Participating Ohio clinical labs reported 7,960 specimens tested for influenza this season thus far. Positive results include: (1) A(H1N1)pdm09; (1) A/H3N2; (14) Flu A Not Subtyped, and (8) Flu B (through 12/19/15). ODH Public Health Lab reported 78 specimens tested for influenza from various submitters this season thus far. Positive results include: (2) A(H1N1)pdm09; (1) A/H3N2; (1) Influenza B (through 12/19/15). Please visit the ODH website for more information.

ED Respiratory Visits

In the 50th week of 2015, the percentage of all ED visits categorized as *respiratory* decreased slightly compared to the percentage seen the previous week and is slightly lower than its historic baseline for the week (Figure 5).

Over-the-Counter (OTC) Medication Sales

In week 50 of 2015, trends for all local over-the-counter medication sales being tracked decreased (decrease in cough and cold, electrolyte, thermometer, chest rub, pediatric anti-fever, adult anti-fever, and throat lozenge sales) compared to last week.

Additional Influenza Activity Web Links:

Ohio Seasonal Flu Surveillance: <http://www.odh.ohio.gov/features/odhfeatures/seasflu/ohfluactivity.aspx>

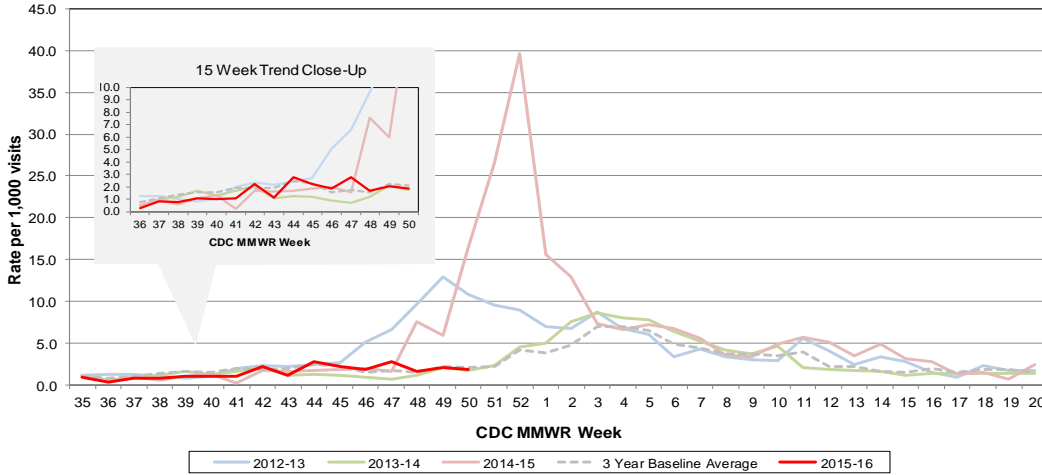
CDC National Seasonal Flu Surveillance Reports: <http://www.cdc.gov/flu/weekly/>

CDC International Flu Activity Map: <http://www.cdc.gov/flu/international/activity.htm>

World Health Organization Situation Updates: http://www.who.int/influenza/surveillance_monitoring/en/

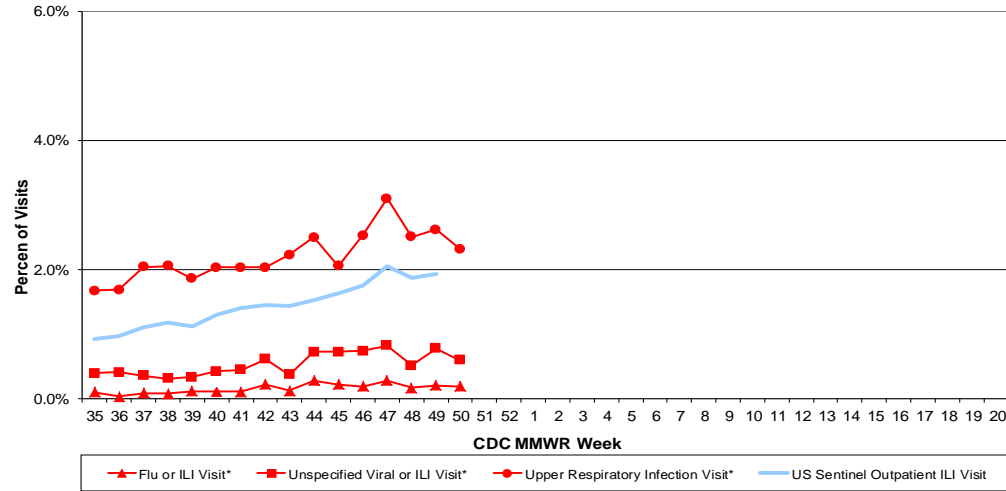
Columbus & Franklin County Influenza Monitoring Summary – Week 50, 2015 (12/13/2015-12/19/2015)

Figure 1: Local Participating Outpatient Primary Care Provider Influenza or Influenza-Like Illness Visit Rate*, Franklin County, OH



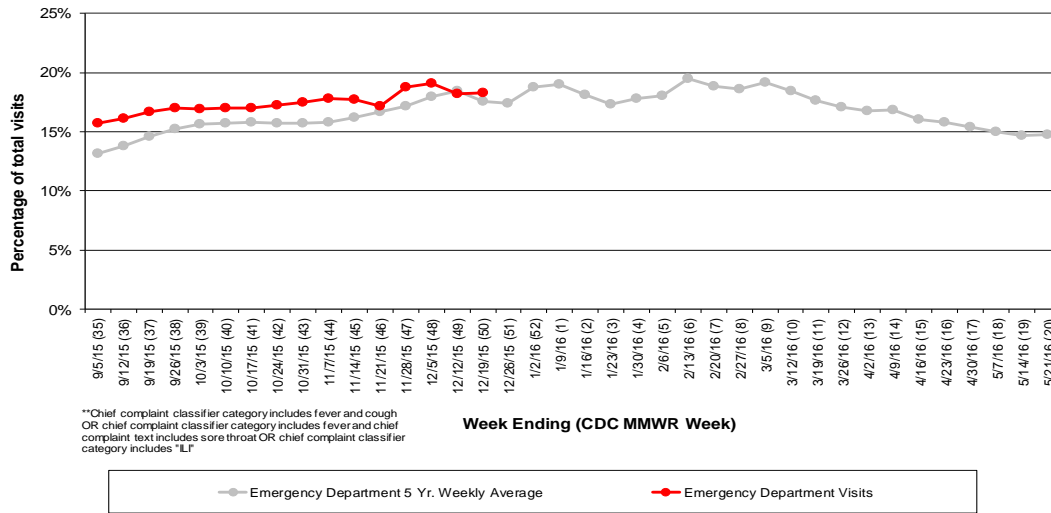
*Source: Medical Claims data from athenaHealth®
 Note: athenaHealth® claims data are subject to filing and processing time lags. Historical data are updated when they are received.

Figure 2: Percentage of Local Outpatient Participating Provider* and CDC National Outpatient Sentinel Health Care Provider Site visits for ILI and Associated Illnesses, 2015-16



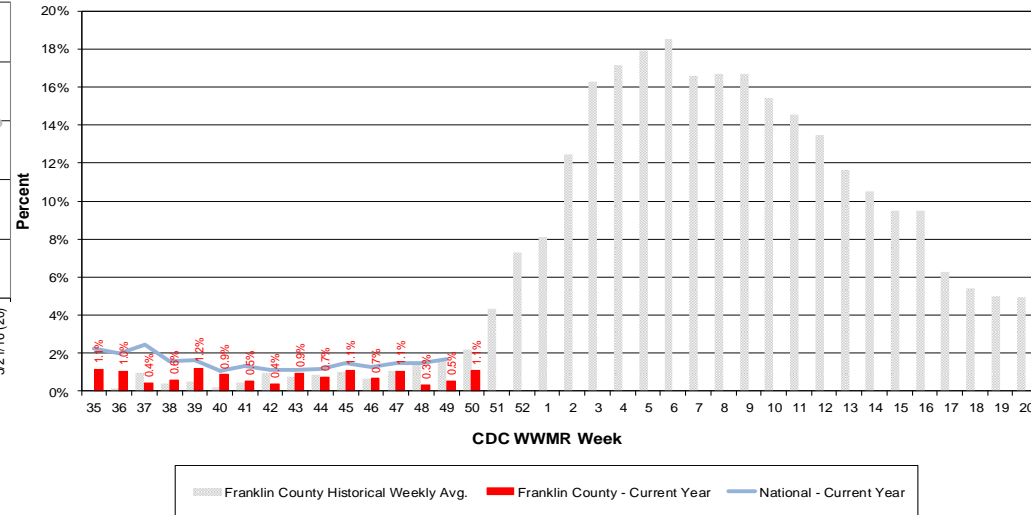
*Source: Local medical claims data provided by athenaHealth®
 Note: athenaHealth® claims data are subject to filing and processing time lags. Historical data are updated when they are received.

Figure 3: Franklin County Resident ILI Defined ED Visits, 2015-16, Franklin County, OH**



**Chief complaint classifier category includes fever and cough
 OR chief complaint classifier category includes fever and chief
 complaint text includes sore throat OR chief complaint classifier
 category includes "LI"

Figure 4: Percentage of Local Reporting and National Laboratory Positive Influenza Tests by Week, 2015-16



Columbus & Franklin County Influenza Monitoring Summary – Week 50, 2015 (12/13/2015-12/19/2015)

Figure 5: Franklin County Resident Respiratory ED Visits, 2015-16, Franklin County, OH

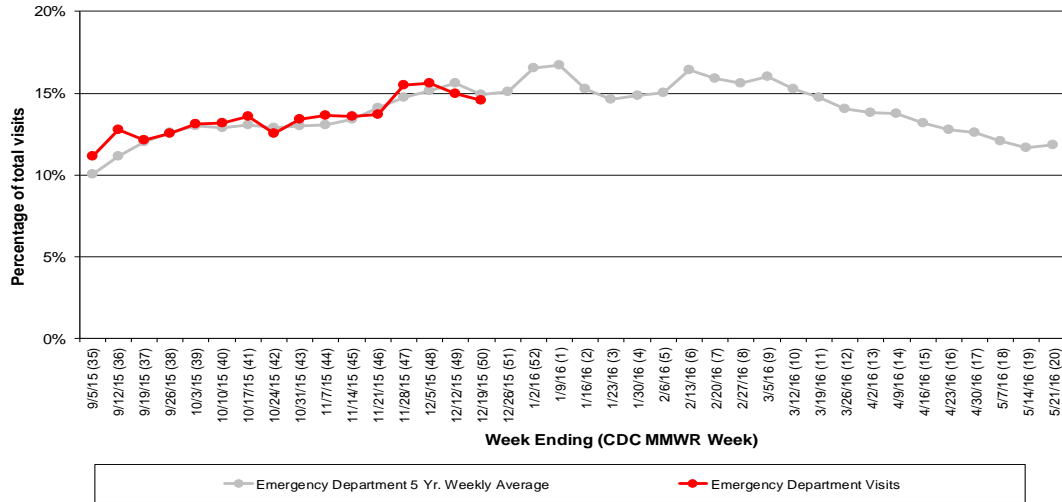


Figure 6: Selected Number of Over-the-Counter Medication Sales, 2015-16, Franklin County, OH

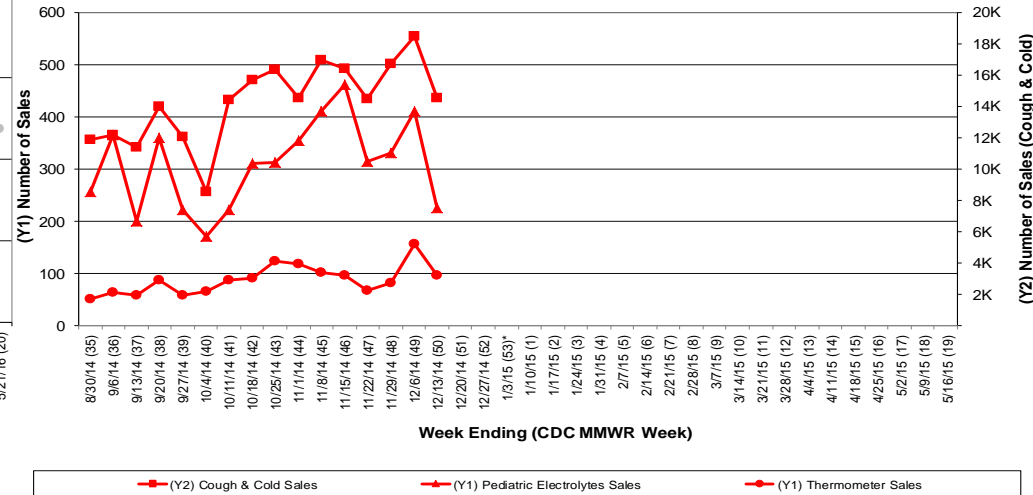
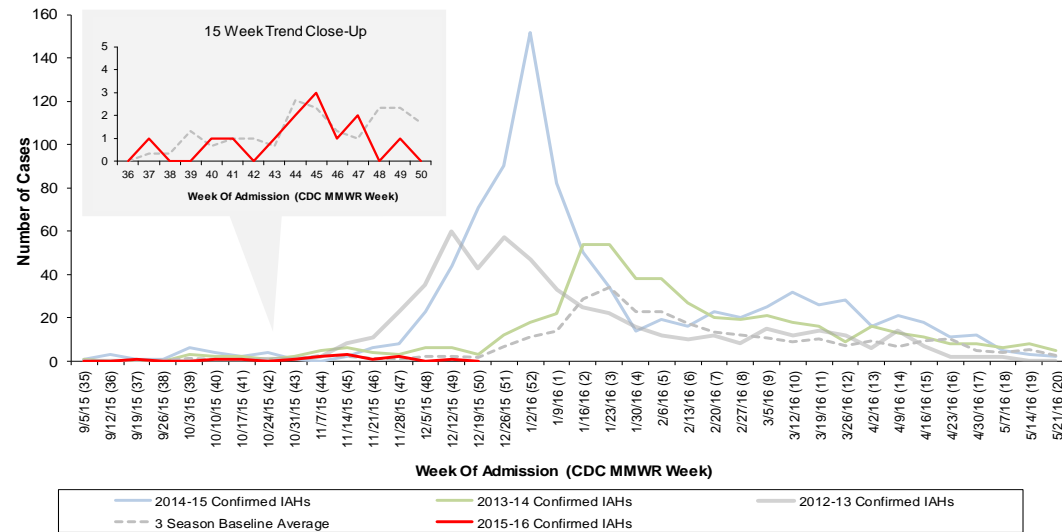


Figure 7: Franklin County Confirmed Influenza Associated Hospitalizations by Hospital Admission Week (As of 10:00 AM, 12/22/2015)



Franklin County, OH, Confirmed Influenza Hospitalization Cumulative Rates (per 100,000) by Age-Group and Admission Week, 2015-2016 Season

