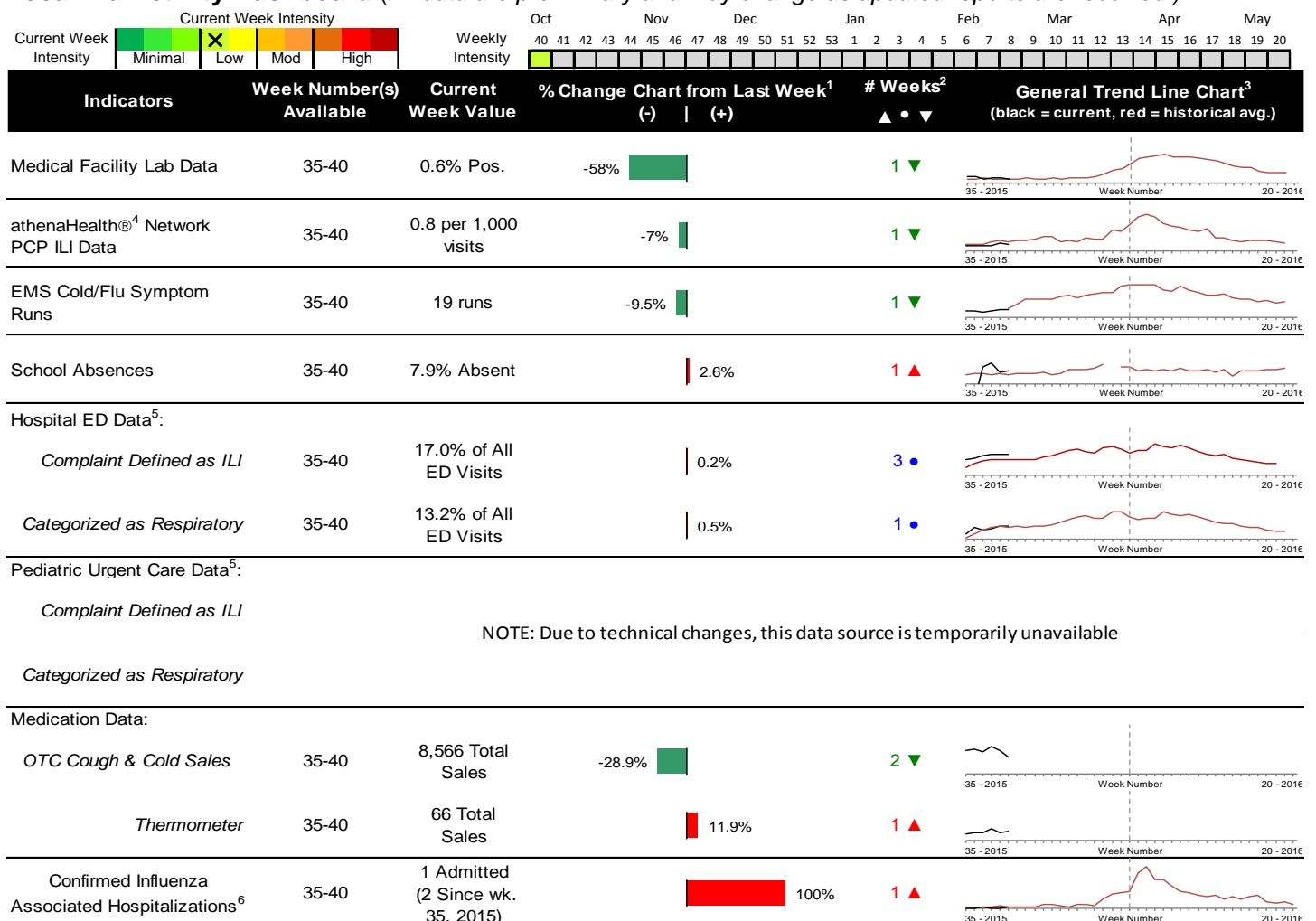


Highlights

- This is the 1st weekly summary for the 2015-16 influenza season. In week 40, local flu activity indicator trends were mixed and overall activity was low.
- Geographic activity and local intensity designation (Click [here](#) for definitions) = SPORADIC, LOW
- Local medical facility labs reported 354 tests run with 2 (0.6%) positive results for week 40 of 2015. This is lower than last week's 1.4% and is slightly higher than the weekly baseline.
- The percentages of ED visits for both influenza-like-illness (ILI) and respiratory symptoms were stable compared to week 39. The percentage of ED visits for ILI is slightly above the baseline average while respiratory symptom visits are similar to its weekly baseline average.
- In week 40 of 2015, trends for the local over-the-counter medication sales tracked generally decreased (decrease in cough and cold, electrolyte, chest rub, pediatric anti-fever, adult anti-fever and throat lozenge sales; increase in thermometer sales) compared to last week.
- Nationally in week 40, influenza activity was low. Please [visit the CDC website for specific information](#) (National data is usually updated on Friday of each week).

Local Flu Activity Dashboard *(All data are preliminary and may change as updated reports are received.)*



NOTE: Due to technical changes, this data source is temporarily unavailable

Reportable Conditions (Cumulative Numbers as of Oct 14, 2015, 9:00 AM)	2010	2011	2012	2013	2014	2015 YTD
Pediatric Influenza Associated Death Reported by Year (based on date of death)	0	0	0	0	0	0
Influenza Associated Hospitalizations (IAH) Reported by Admission Year ⁷	35	266	394	300	938	522
IAH comparison by Season (October - May or Weeks 35 - 20)	2010-11	2011-12	2012-13	2013-14	2014-15	2015-16
Current season (2015-16) is from week 35 through 40.	284	95	512	486	1,017	2

¹Interpret with caution. Indicators with small numbers subject to large weekly percentage fluctuations.

²Number of weeks "▲" = Increase (>2%), "▼" = Decrease (>2%), "•" = Stable (-2% to +2%).

³Black line is current years data. Based on data availability, red line is historical average (excluding pandemic year).

⁴Data Source: Medical claims data from athenaHealth® (www.athenahealth.com). Rate of ILI visits to Franklin County, OH athenaHealth® network primary care practices/physicians.

⁵Franklin County, OH residents only (based on zipcode). NOTE: Excludes one hospital system included in the past due to technical changes affecting visit classification assignment and numbers.

⁶Confirmed cases only. Based on jurisdiction equal to Franklin County or City of Columbus and admission date available in ODRS.

CDC 122-Cities Mortality Reporting System: Pneumonia and Influenza (P&I) Mortality

In week 40 of 2015, 4.0% of all Columbus and Franklin County deaths were attributed to pneumonia and influenza. Nationally, 5.3% of deaths reported were attributed to pneumonia and influenza in week 40. This national percentage is below the national epidemic threshold of 5.9% for week 40.

Influenza Morbidity and Influenza-Like Illness (ILI) Reports

In week 40, the preliminary local influenza-like-illness (ILI) visit rate to athenaHealth® providers (0.8 per 1,000 visits) decreased slightly compared to the previous week and is slightly lower than the baseline average for the week (Figure 1). The week 40 percentage of Emergency Department (ED) visits for ILI symptoms was stable compared to the previous week (Figure 3) and is slightly higher than the historic baseline for the week.

Nationally, during week 40 of 2015, 1.2% of patient visits reported through the US Outpatient Influenza-like Illness Surveillance Network (ILINet), were due to influenza-like illness (ILI). The percentage is below the national baseline of 2.1%.

Laboratory Surveillance

During week 40 of 2015, reporting Franklin County sentinel medical facility laboratories tested 354 specimens, with 2 (0.6%) positive (Figure 4). The total number of tests done by local reporting labs from week 35 of 2014 through week 40 of 2015 is 1,646 with 22 (1.3%) positives (17 type A, 5 type B, 0 both A and B, 0 type unknown).

Nationally in week 40 of 2015, clinical laboratories reported 8,703 specimens tested for influenza viruses, 104 (1.2%) of which were positive (76 type A, 28 type B). Public health laboratories reported testing 436 specimens, 28 of which were positive (26 type A – of which 2 were A(H1N1)pdm09 and 24 were H3; 2 type B). Please visit the CDC website for more information.

Participating statewide clinical labs reported 461 specimens tested for influenza virus, 2 (0.4%) of which were positive (1) A/pdmH1N1; (1) A/H3N2; (0) Flu A Not Subtyped, and (0) Flu B (through 10/10/15). ODH Public Health Lab results for Ohio cases that are PCR positive for influenza during the 2015-16 season included: (1) A/pdmH1N1; (0) A/H3N2; (0) Influenza B (through 10/10/15).

ED Respiratory Visits

In the 40th week of 2015, the percentage of all ED visits categorized as *respiratory* was stable compared to the percentage seen the previous week and is similar to its historic baseline for the week (Figure 5).

Over-the-Counter (OTC) Medication Sales

In week 40 of 2015, trends for the local over-the-counter medication sales tracked generally decreased (decrease in cough and cold, electrolyte, chest rub, pediatric anti-fever, adult anti-fever and throat lozenge sales; increase in thermometer sales) compared to last week.

Additional Influenza Activity Web Links:

Ohio Seasonal Flu Surveillance: <http://www.odh.ohio.gov/features/odhfeatures/seasflu/ohfluactivity.aspx>

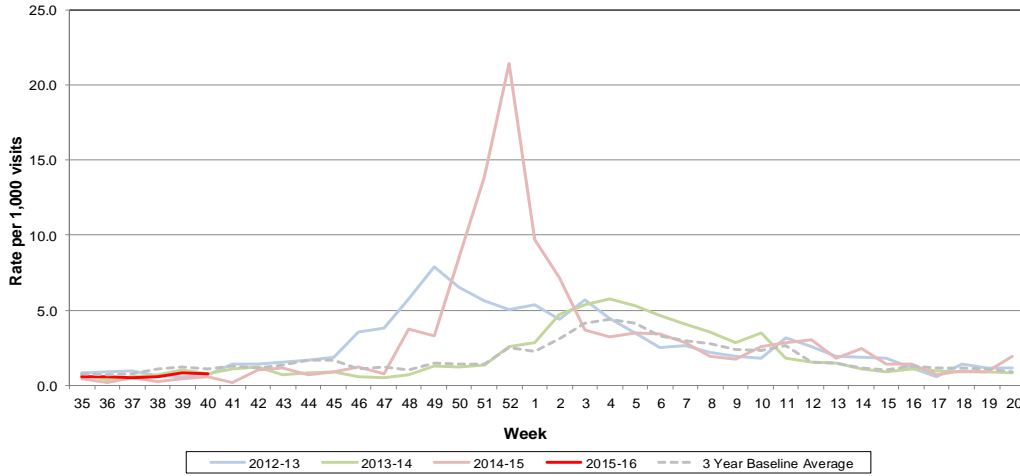
CDC National Seasonal Flu Surveillance Reports: <http://www.cdc.gov/flu/weekly/>

CDC International Flu Activity Map: <http://www.cdc.gov/flu/international/activity.htm>

World Health Organization Situation Updates: http://www.who.int/influenza/surveillance_monitoring/en/

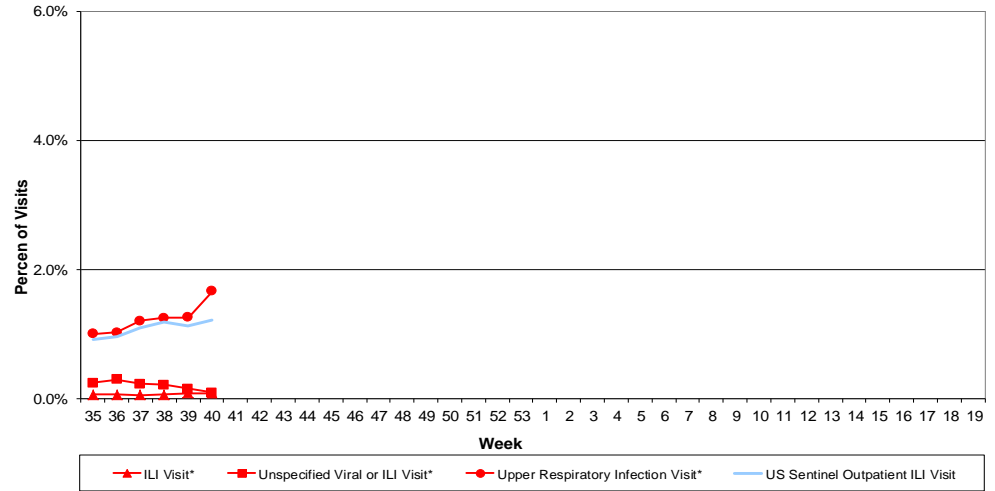
Columbus & Franklin County Influenza Monitoring Summary – Week 40, 2015 (10/4/2015-10/10/2015)

Figure 1: Local Participating Outpatient Primary Care Provider Influenza-Like-Illness Visit Rate*, Franklin County, OH



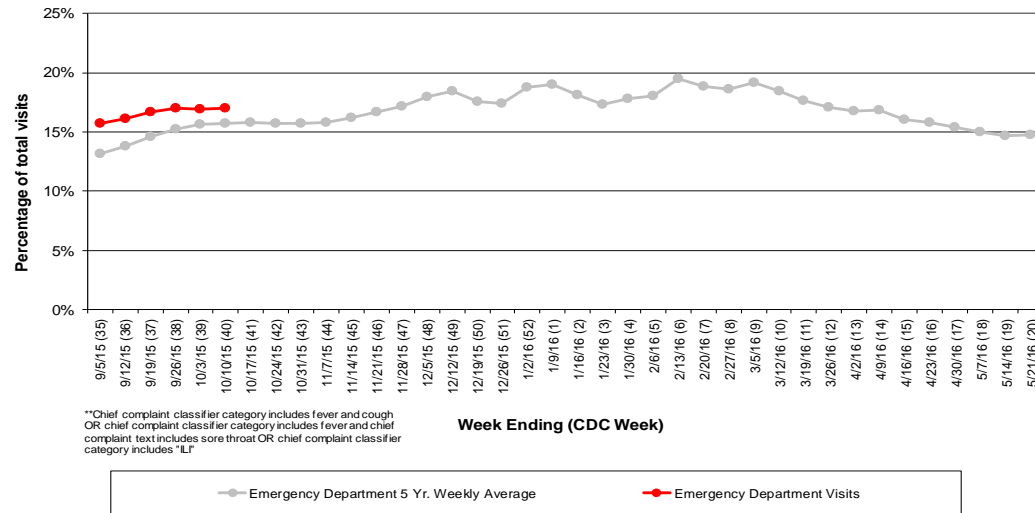
*Source: Medical Claims data from athenaHealth®
 Note: athenaHealth® claims data are subject to filing and processing time lags. Historical data are updated when they are received.

Figure 2: Percentage of Local Outpatient Participating Provider* and CDC National Outpatient Sentinel Health Care Provider Site visits for ILI and Associated Illnesses, 2015-16



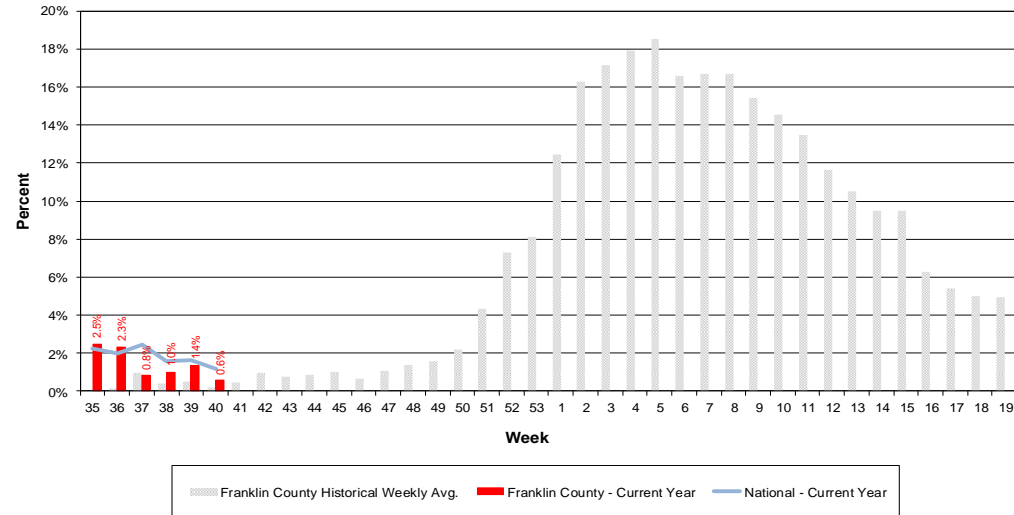
*Source: Local medical claims data provided by athenaHealth®
 Note: athenaHealth® claims data are subject to filing and processing time lags. Historical data are updated when they are received.

Figure 3: Franklin County Resident ILI Defined ED Visits, 2015-16, Franklin County, OH**



**Chief complaint classifier category includes fever and cough OR chief complaint classifier category includes fever and chief complaint text includes sore throat OR chief complaint classifier category includes "ILI"

Figure 4: Percentage of Local Reporting and National Laboratory Positive Influenza Tests by Week, 2015-16



Columbus & Franklin County Influenza Monitoring Summary – Week 40, 2015 (10/4/2015-10/10/2015)

Figure 5: Franklin County Resident Respiratory ED Visits, 2015-16, Franklin County, OH

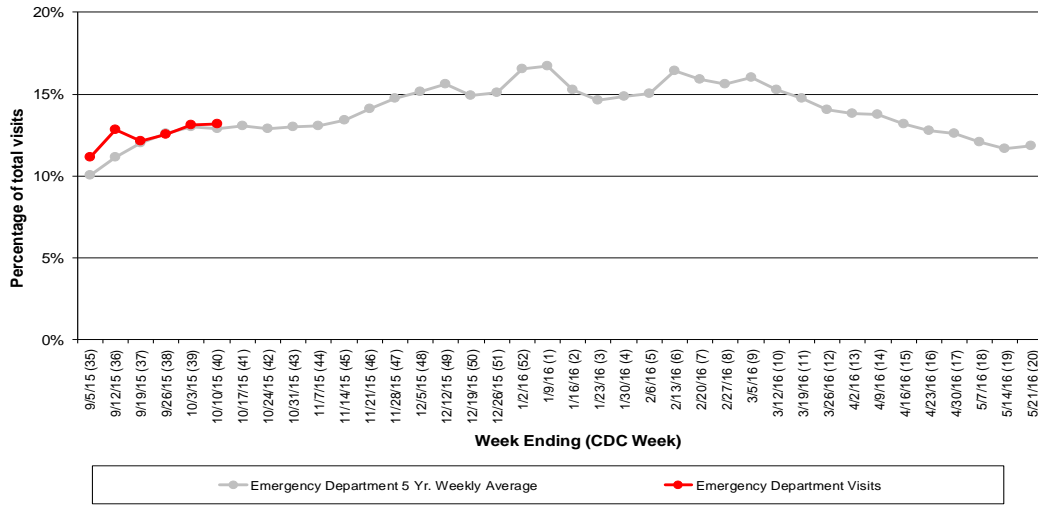


Figure 6: Selected Number of Over-the-Counter Medication Sales, 2015-16, Franklin County, OH

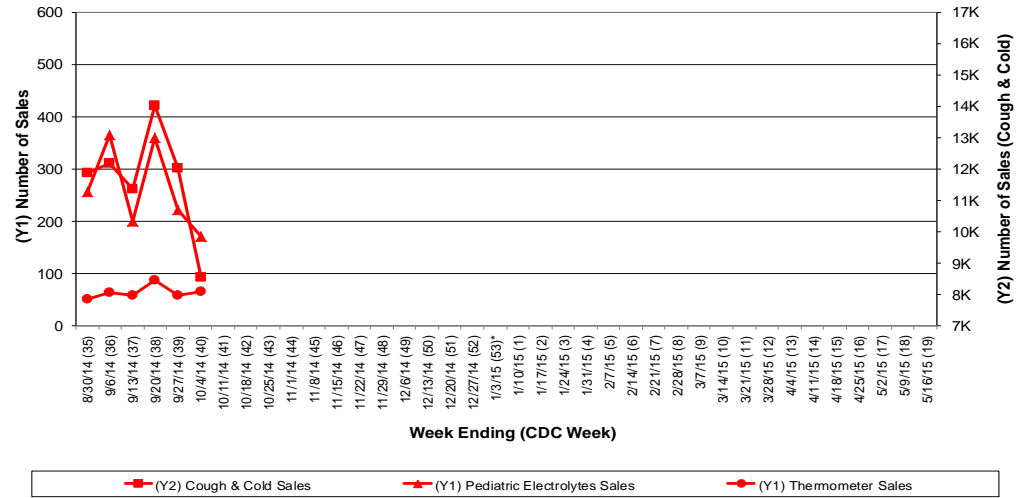
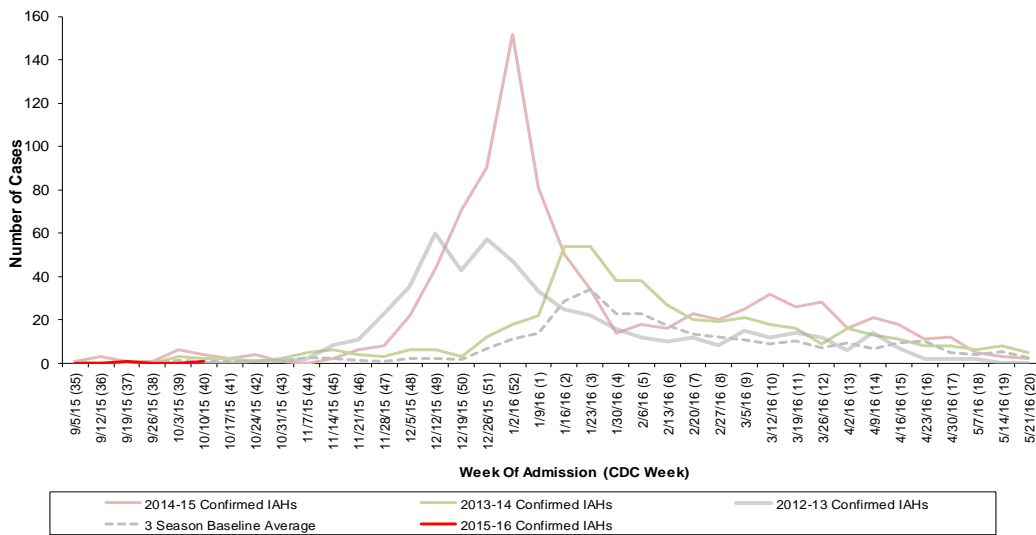


Figure 7: Franklin County Confirmed Influenza Associated Hospitalizations by Hospital Admission Week (As of 9:00 AM, 10/14/2015)



Franklin County, OH, Confirmed Influenza Hospitalization Cumulative Rates (per 100,000) by Age-Group and Admission Week, 2015-2016 Season

