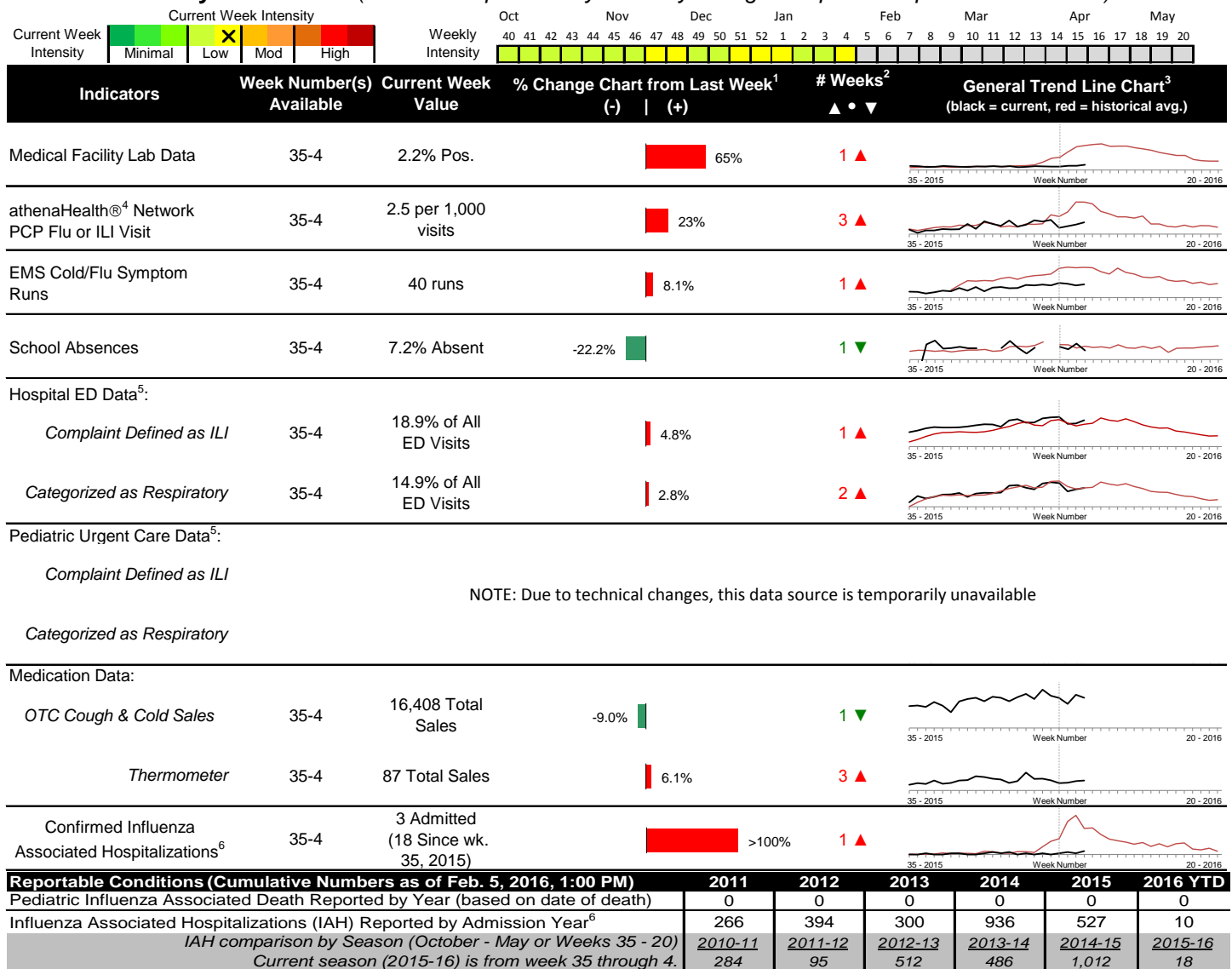


## 2015-2016 Columbus & Franklin County Seasonal Influenza Activity Weekly Summary (Week 4, Jan 24<sup>th</sup>, 2016– Jan 30<sup>th</sup>, 2016)

### Highlights

- In week 4 of 2016, the majority of individual local flu activity indicator trends increased. Overall, local flu intensity continues to be low, but increased compared to the previous week.
- Geographic spread and local intensity designation (Click [here](#) for definitions) = LOCALIZED, LOW
- Local medical facility labs reported 1,036 tests run with 23 (2.2%) positive results for week 4 of 2016. This is higher than last week's 1.3% and is lower than the weekly baseline.
- The percentage of both ED visits for influenza-like-illness (ILI) and respiratory symptoms increased slightly compared to week 3. The percentage of ED visits for ILI is above its baseline average for the week, while the respiratory symptom visit percentage is similar to its baseline average for the week.
- In week 4 of 2016, trends for the majority of local over-the-counter medication sales tracked decreased (decrease in cough and cold, electrolyte, chest rub, pediatric anti-fever, adult anti-fever, and throat lozenge sales; increase in thermometer sales) compared to last week.
- Nationally in week 4, influenza activity increased slightly in the United States. Please [visit the CDC website for specific information](#) (National data is usually updated on Friday of each week).

### Local Flu Activity Dashboard *(All data are preliminary and may change as updated reports are received.)*



<sup>1</sup>Interpret with caution. Indicators with small numbers subject to large weekly percentage fluctuations.

<sup>2</sup>Number of weeks "▲" = Increase (>2%), "▼" = Decrease (>2%), "●" = Stable (-2% to +2%).

<sup>3</sup>Black line is current years data. Based on data availability, red line is historical average (excluding pandemic year).

<sup>4</sup>Data Source: Medical claims data from athenaHealth® (www.athenahealth.com). Rate of Flu or ILI visits to Franklin County, OH athenaHealth® network primary care practices/physicians. Claims data are subject to filing and processing time lags. Historical data are updated when they are received.

<sup>5</sup>Franklin County, OH residents only (based on zipcode). NOTE: Excludes one hospital system included in the past due to technical changes affecting visit classification assignment and numbers.

<sup>6</sup>Confirmed cases only. Based on jurisdiction equal to Franklin County or City of Columbus and admission date available in ODRS.

### **CDC 122-Cities Mortality Reporting System: Pneumonia and Influenza (P&I) Mortality**

In week 4 of 2016, 7.6% of all Columbus and Franklin County deaths were attributed to pneumonia and influenza. Nationally in week 4, 6.8% of deaths reported were attributed to pneumonia and influenza. This national percentage was below the national epidemic threshold for week 4.

### **Influenza Morbidity and Influenza-Like Illness (ILI) Reports**

In week 4, the preliminary local influenza and influenza-like-illness (ILI) visit rate to athenaHealth® providers (2.5 per 1,000 visits) increased compared to the previous week and is below its baseline average for the week (Figure 1). The week 4 percentage of all Emergency Department (ED) visits categorized as ILI increased slightly compared to the previous week (Figure 3) and is higher than the historic baseline for the week.

Nationally, during week 4 of 2016, 2.2% of patient visits reported through ILINet were due to influenza-like illness (ILI). The percentage is above the national baseline of 2.1% for week 4.

### **Laboratory Surveillance**

During week 4 of 2016, reporting Franklin County sentinel medical facility laboratories tested 1,036 specimens, with 23 (2.2%) positive (Figure 4). The total number of tests done by local reporting labs from week 35 of 2014 through week 4 of 2016 is 17,457 with 161 (0.9%) positives (118 type A, 39 type B, 4 both A and B, 0 type unknown).

Nationally in week 4 of 2016, clinical laboratories reported 15,964 specimens tested for influenza viruses, 1,085 (6.8%) of which were positive (739 type A, 346 type B). Public health laboratories reported testing 1,255 specimens, 368 of which were positive (273 type A – of which 167 were A(H1N1)pdm09, 55 were A/H3, and 51 were not subtyped; 95 type B – of which 36 were Yamagata lineage, 15 were Victoria lineage, and 44 where lineage was not performed). Please visit the CDC website for more information, including cumulative data since week 40.

In week 4 of 2016, participating Ohio clinical labs reported 13,020 specimens tested for influenza this season thus far. Positive results include: (7) A(H1N1)pdm09; (3) A/H3N2; (37) Flu A Not Subtyped, and (14) Flu B (through 1/30/16). ODH Public Health Lab reported 103 specimens tested for influenza from various submitters this season thus far. Positive results include: (8) A(H1N1)pdm09; (1) A/H3N2; (1) Influenza B (through 1/30/16). Please visit the ODH website for more information.

### **ED Respiratory Visits**

In the 4<sup>th</sup> week of 2016, the percentage of all ED visits categorized as respiratory increased slightly compared to the percentage seen the previous week and is similar to its historic baseline for the week (Figure 5).

### **Over-the-Counter (OTC) Medication Sales**

In week 4 of 2016, trends for the majority of local over-the-counter medication sales tracked decreased (decrease in cough and cold, electrolyte, chest rub, pediatric anti-fever, adult anti-fever, and throat lozenge sales; increase in thermometer sales) compared to last week.

### **Additional Influenza Activity Web Links:**

Ohio Seasonal Flu Surveillance: <http://www.odh.ohio.gov/features/odhfeatures/seasflu/ohfluactivity.aspx>

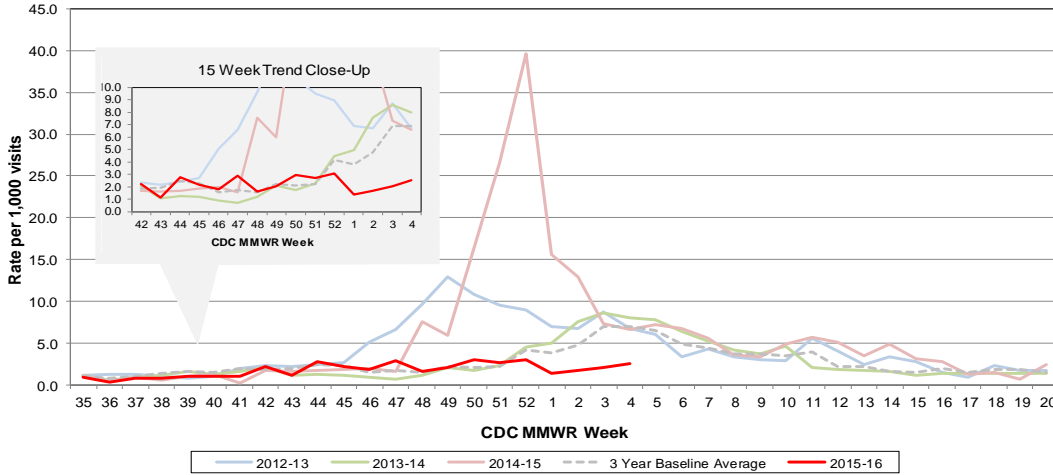
CDC National Seasonal Flu Surveillance Reports: <http://www.cdc.gov/flu/weekly/>

CDC International Flu Activity Map: <http://www.cdc.gov/flu/international/activity.htm>

World Health Organization Situation Updates: [http://www.who.int/influenza/surveillance\\_monitoring/en/](http://www.who.int/influenza/surveillance_monitoring/en/)

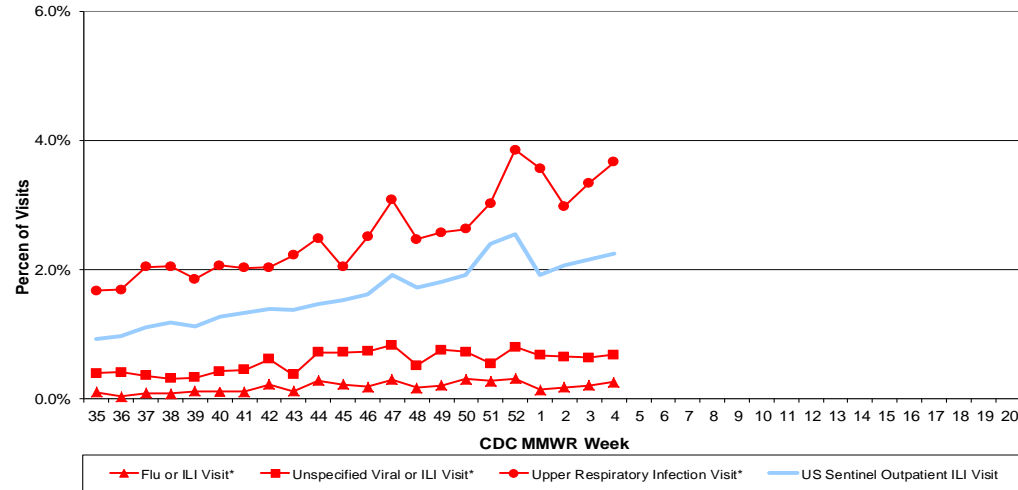
Columbus & Franklin County Influenza Monitoring Summary – Week 4, 2016 (1/24/2016-1/30/2016)

**Figure 1: Local Participating Outpatient Primary Care Provider Influenza or Influenza-Like-Illness Visit Rate\*, Franklin County, OH**



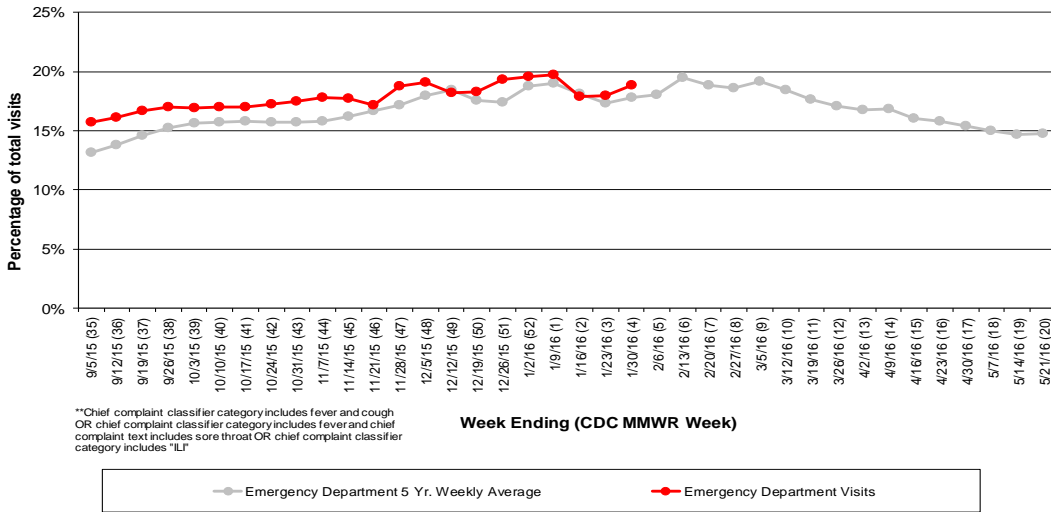
\*Source: Medical Claims data from athenaHealth®  
 Note: athenaHealth® claims data are subject to filing and processing time lags. Historical data are updated when they are received.

**Figure 2: Percentage of Local Outpatient Participating Provider\* and CDC National Outpatient Sentinel Health Care Provider Site visits for ILI and Associated Illnesses, 2015-16**



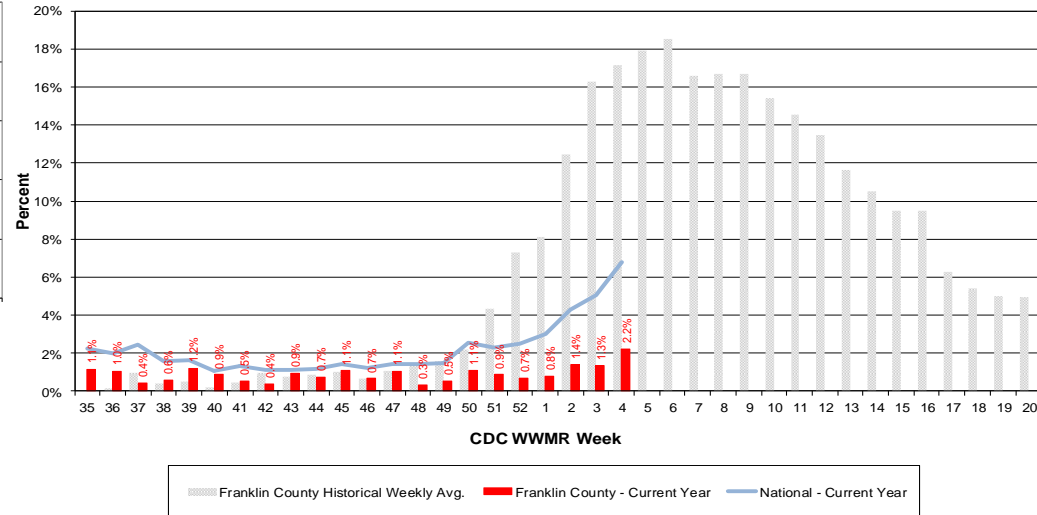
\*Source: Local medical claims data provided by athenaHealth®  
 Note: athenaHealth® claims data are subject to filing and processing time lags. Historical data are updated when they are received.

**Figure 3: Franklin County Resident ILI Defined\*\* ED Visits, 2015-16, Franklin County, OH**



\*\*Chief complaint classifier category includes fever and cough  
 OR chief complaint classifier category includes fever and chief  
 complaint text includes sore throat OR chief complaint classifier  
 category includes "ILI"

**Figure 4: Percentage of Local Reporting and National Laboratory Positive Influenza Tests by Week, 2015-16**



Columbus & Franklin County Influenza Monitoring Summary – Week 4, 2016 (1/24/2016-1/30/2016)

Figure 5: Franklin County Resident Respiratory ED Visits, 2015-16, Franklin County, OH

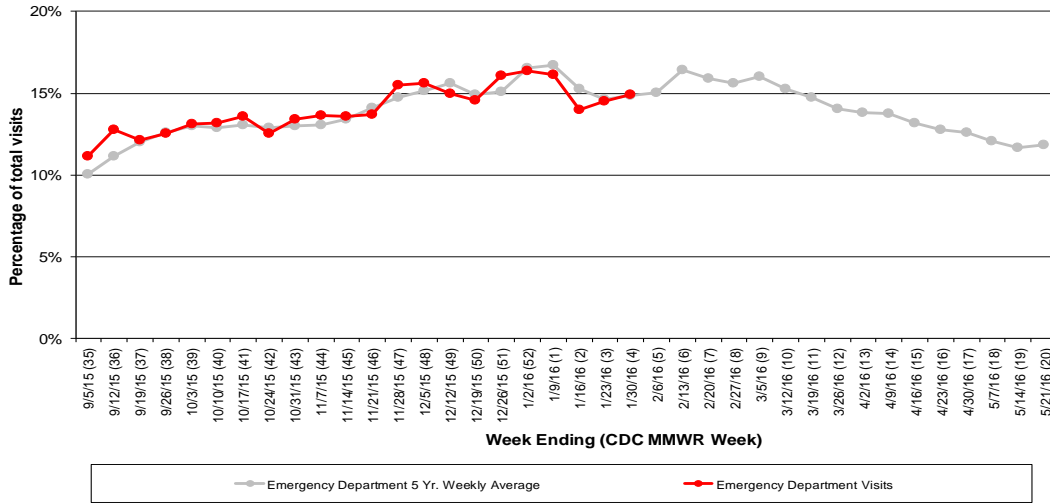


Figure 6: Selected Number of Over-the-Counter Medication Sales, 2015-16, Franklin County, OH

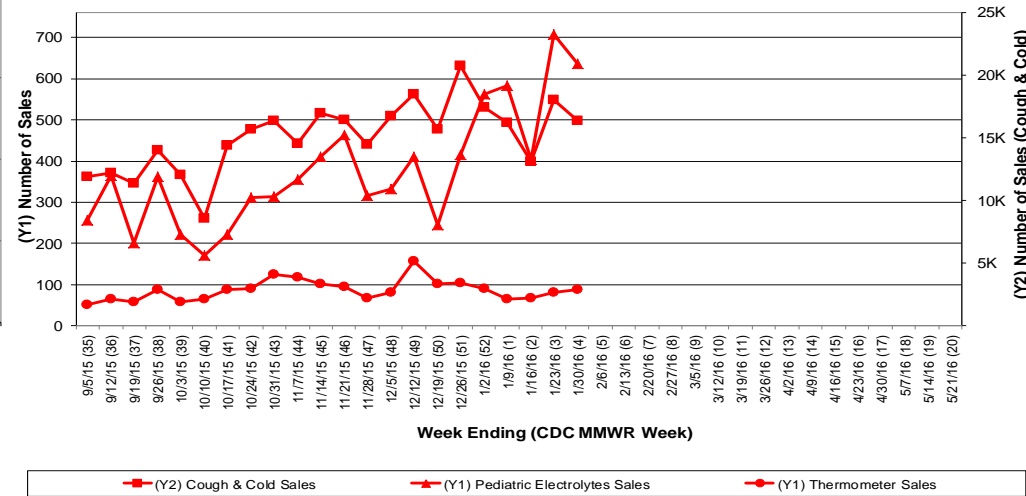
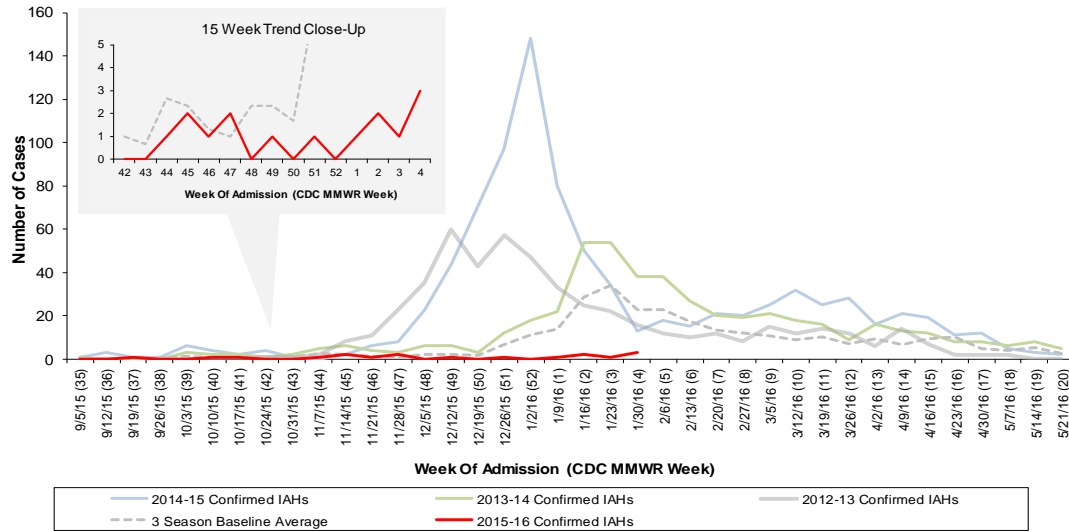


Figure 7: Franklin County Confirmed Influenza Associated Hospitalizations by Hospital Admission Week (As of 1:00 PM, 2/5/2016)



Franklin County, OH, Confirmed Influenza Hospitalization Cumulative Rates (per 100,000) by Age-Group and Admission Week, 2015-2016 Season

