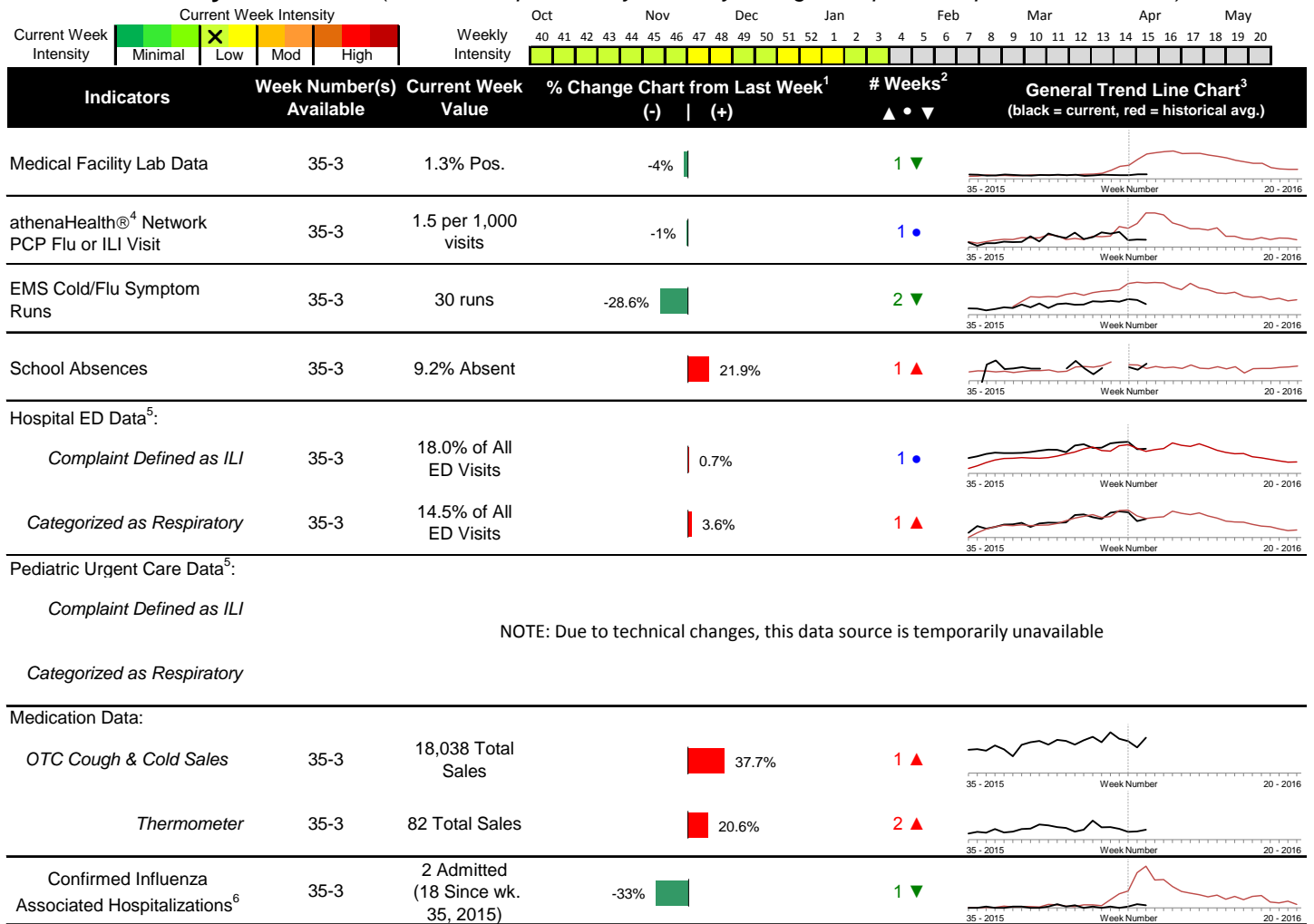


Highlights

- In week 3 of 2016, the individual local flu activity indicator trends were mixed. Overall, local flu intensity continues to be low and increased slightly compared to the previous week.
- Geographic spread and local intensity designation (Click [here](#) for definitions) = SPORADIC, LOW
- Local medical facility labs reported 894 tests run with 12 (1.3%) positive results for week 3 of 2016. This is slightly lower than last week's 1.4% and is lower than the weekly baseline.
- The percentage of ED visits for influenza-like-illness (ILI) was stable, while respiratory symptom visits increased slightly compared to week 2. The percentage of ED visits for ILI is slightly above its baseline average for the week, while respiratory symptom visit percentage is similar to its baseline average for the week.
- In week 3 of 2016, the trends for all local over-the-counter medication sales tracked increased (increase in cough and cold, electrolyte, thermometer, chest rub, pediatric anti-fever, adult anti-fever, and throat lozenge sales) compared to last week.
- Nationally in week 3, influenza activity increased slightly in the United States. Please [visit the CDC website for specific information](#) (National data is usually updated on Friday of each week).

Local Flu Activity Dashboard (All data are preliminary and may change as updated reports are received.)



NOTE: Due to technical changes, this data source is temporarily unavailable

Reportable Conditions (Cumulative Numbers as of Jan. 25, 2016, 4:45 PM)	2011	2012	2013	2014	2015	2016 YTD
Pediatric Influenza Associated Death Reported by Year (based on date of death)	0	0	0	0	0	0
Influenza Associated Hospitalizations (IAH) Reported by Admission Year ⁶	266	394	300	942	535	3
IAH comparison by Season (October - May or Weeks 35 - 20)	2010-11	2011-12	2012-13	2013-14	2014-15	2015-16
Current season (2015-16) is from week 35 through 3.	284	95	512	486	1,015	18

¹Interpret with caution. Indicators with small numbers subject to large weekly percentage fluctuations.

²Number of weeks "▲" = Increase (>2%), "▼" = Decrease (>2%), "•" = Stable (-2% to +2%).

³Black line is current years data. Based on data availability, red line is historical average (excluding pandemic year).

⁴Data Source: Medical claims data from athenaHealth® (www.athenahealth.com). Rate of Flu or ILI visits to Franklin County, OH athenaHealth® network primary care practices/physicians. Claims data are subject to filing and processing time lags. Historical data are updated when they are received.

⁵Franklin County, OH residents only (based on zipcode). NOTE: Excludes one hospital system included in the past due to technical changes affecting visit classification assignment and numbers.

⁶Confirmed cases only. Based on jurisdiction equal to Franklin County or City of Columbus and admission date available in ODRS.

CDC 122-Cities Mortality Reporting System: Pneumonia and Influenza (P&I) Mortality

In week 3 of 2016, 7.5% of all Columbus and Franklin County deaths were attributed to pneumonia and influenza. Nationally in week 3, 6.7% of deaths reported were attributed to pneumonia and influenza. This national percentage was above the national epidemic threshold for week 3.

Influenza Morbidity and Influenza-Like Illness (ILI) Reports

In week 3, the preliminary local influenza and influenza-like-illness (ILI) visit rate to athenaHealth® providers (1.5 per 1,000 visits) was stable compared to the previous week and is below its baseline average for the week (Figure 1). The week 3 percentage of all Emergency Department (ED) visits categorized as ILI is stable compared to the previous week (Figure 3) and is slightly higher than the historic baseline for the week.

Nationally, during week 3 of 2016, 2.2% of patient visits reported through ILINet were due to influenza-like illness (ILI). The percentage is above the national baseline of 2.1% for week 3.

Laboratory Surveillance

During week 3 of 2016, reporting Franklin County sentinel medical facility laboratories tested 894 specimens, with 12 (1.3%) positive (Figure 4). The total number of tests done by local reporting labs from week 35 of 2014 through week 3 of 2016 is 16,421 with 138 (0.84%) positives (96 type A, 38 type B, 4 both A and B, 0 type unknown).

Nationally in week 3 of 2016, clinical laboratories reported 13,517 specimens tested for influenza viruses, 680 (5.0%) of which were positive (500 type A, 180 type B). Public health laboratories reported testing 865 specimens, 242 of which were positive (195 type A – of which 121 were A(H1N1)pdm09, 39 were A/H3, and 35 were not subtyped; 47 type B – of which 25 were Yamagata lineage, 8 were Victoria lineage, and 14 where lineage was not performed). Please visit the CDC website for more information, including cumulative data since week 40.

In week 3 of 2016, participating Ohio clinical labs reported 11,922 specimens tested for influenza this season thus far. Positive results include: (2) A(H1N1)pdm09; (2) A/H3N2; (22) Flu A Not Subtyped, and (13) Flu B (through 1/23/16). ODH Public Health Lab reported 97 specimens tested for influenza from various submitters this season thus far. Positive results include: (6) A(H1N1)pdm09; (1) A/H3N2; (1) Influenza B (through 1/23/16). Please visit the ODH website for more information.

ED Respiratory Visits

In the 3rd week of 2016, the percentage of all ED visits categorized as respiratory increased slightly compared to the percentage seen the previous week and is slightly lower than its historic baseline for the week (Figure 5).

Over-the-Counter (OTC) Medication Sales

In week 3 of 2016, the trends for all local over-the-counter medication sales tracked increased (increase in cough and cold, electrolyte, thermometer, chest rub, pediatric anti-fever, adult anti-fever, and throat lozenge sales) compared to last week.

Additional Influenza Activity Web Links:

Ohio Seasonal Flu Surveillance: <http://www.odh.ohio.gov/features/odhfeatures/seasflu/ohfluactivity.aspx>

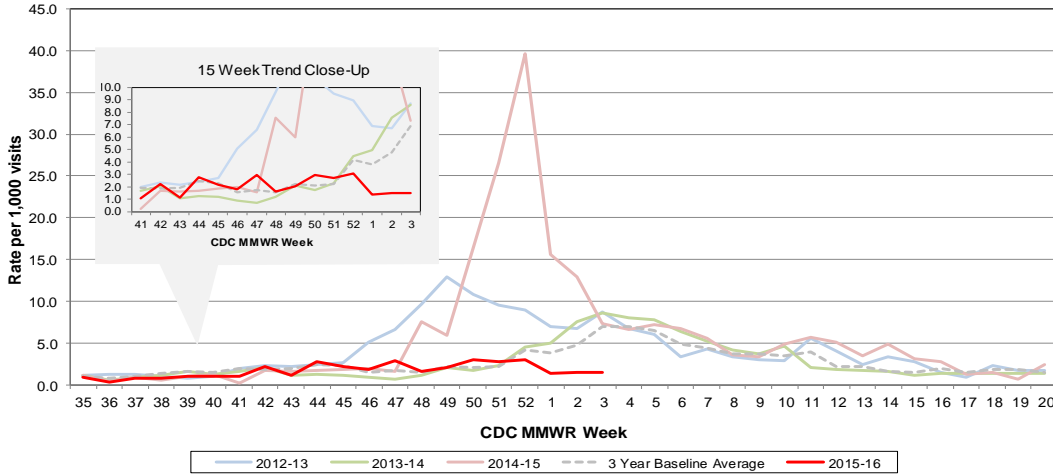
CDC National Seasonal Flu Surveillance Reports: <http://www.cdc.gov/flu/weekly/>

CDC International Flu Activity Map: <http://www.cdc.gov/flu/international/activity.htm>

World Health Organization Situation Updates: http://www.who.int/influenza/surveillance_monitoring/en/

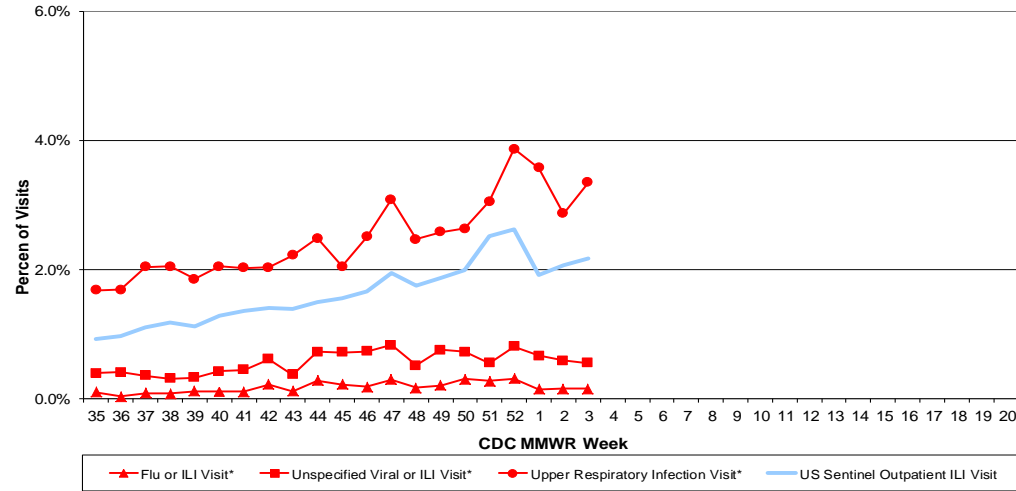
Columbus & Franklin County Influenza Monitoring Summary – Week 3, 2016 (1/17/2016-1/23/2016)

Figure 1: Local Participating Outpatient Primary Care Provider Influenza or Influenza-Like-Illness Visit Rate*, Franklin County, OH



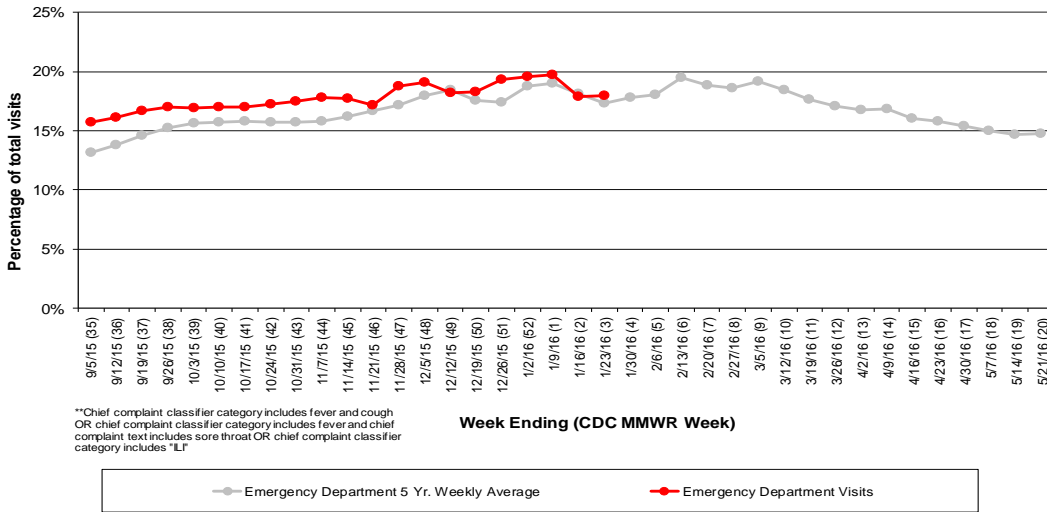
*Source: Medical Claims data from athenaHealth®
 Note: athenaHealth® claims data are subject to filing and processing time lags. Historical data are updated when they are received.

Figure 2: Percentage of Local Outpatient Participating Provider* and CDC National Outpatient Sentinel Health Care Provider Site visits for ILI and Associated Illnesses, 2015-16



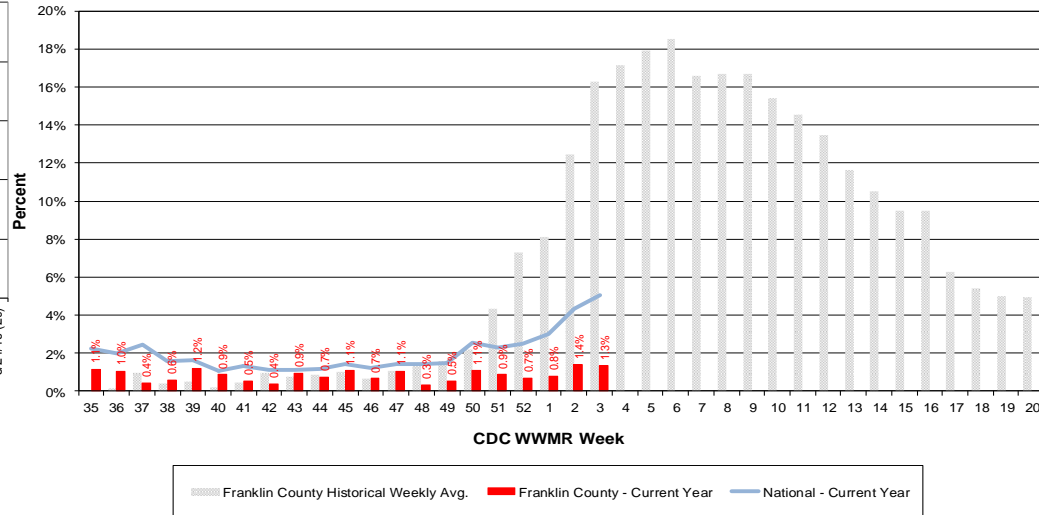
*Source: Local medical claims data provided by athenaHealth®
 Note: athenaHealth® claims data are subject to filing and processing time lags. Historical data are updated when they are received.

Figure 3: Franklin County Resident ILI Defined ED Visits, 2015-16, Franklin County, OH**



**Chief complaint classifier category includes fever and cough
 OR chief complaint classifier category includes fever and chief
 complaint text includes sore throat OR chief complaint classifier
 category includes "LF"

Figure 4: Percentage of Local Reporting and National Laboratory Positive Influenza Tests by Week, 2015-16



Columbus & Franklin County Influenza Monitoring Summary – Week 3, 2016 (1/17/2016-1/23/2016)

Figure 5: Franklin County Resident Respiratory ED Visits, 2015-16, Franklin County, OH

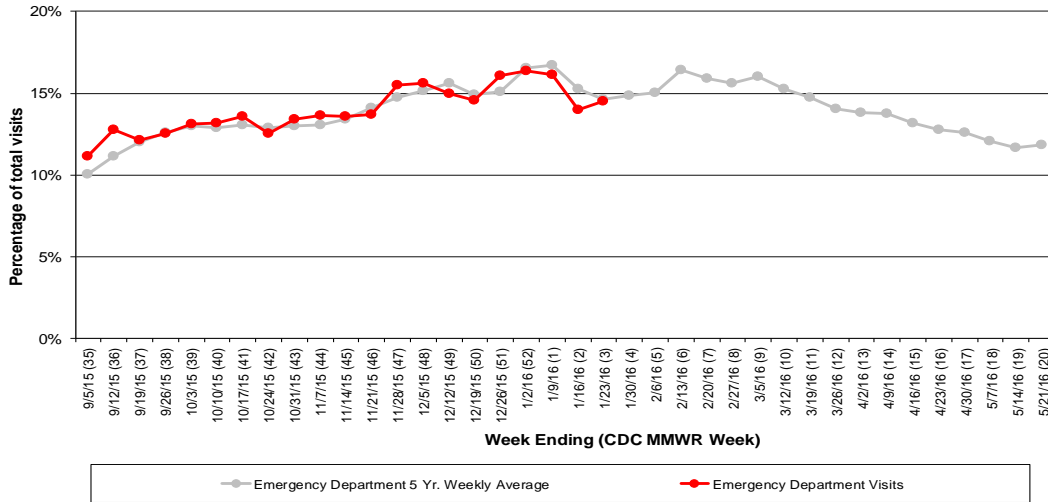


Figure 6: Selected Number of Over-the-Counter Medication Sales, 2015-16, Franklin County, OH

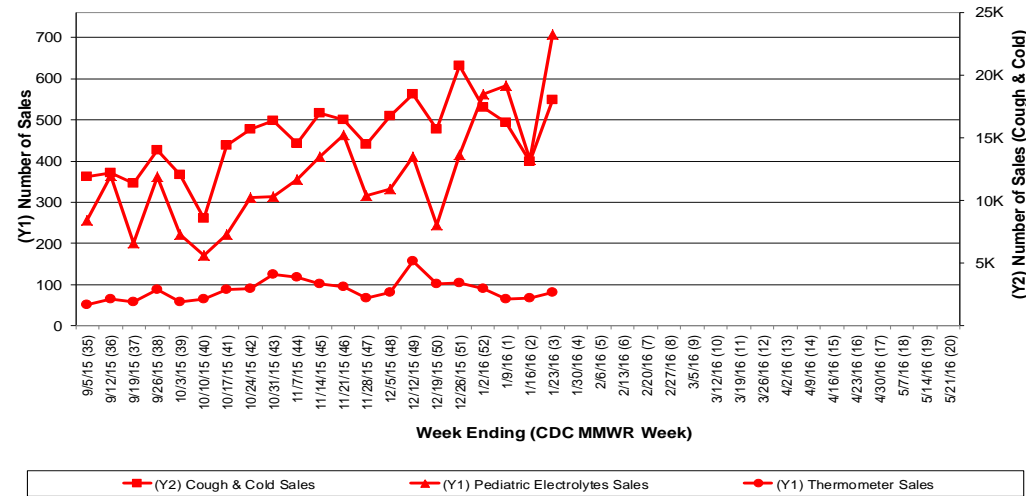
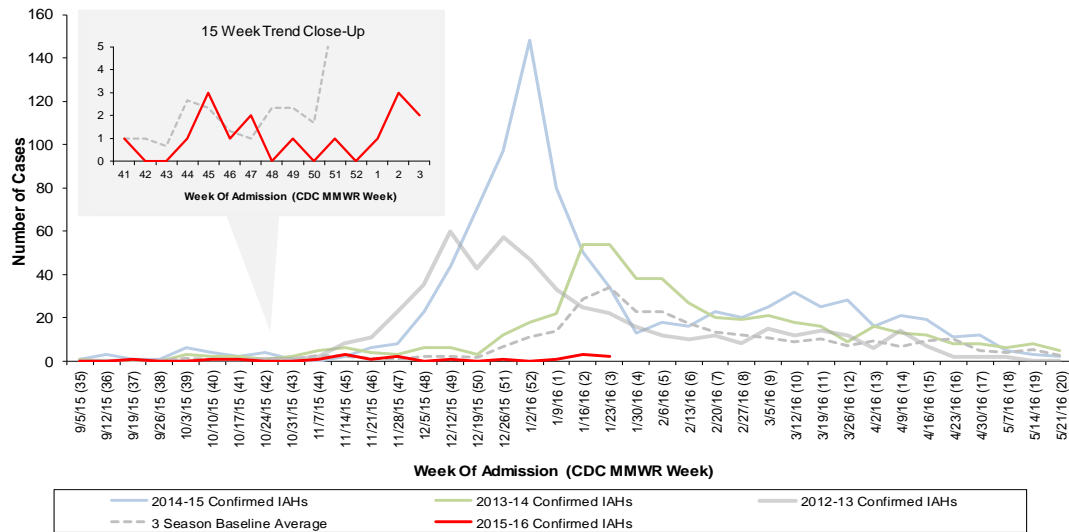


Figure 7: Franklin County Confirmed Influenza Associated Hospitalizations by Hospital Admission Week (As of 4:45 PM, 1/25/2016)



Franklin County, OH, Confirmed Influenza Hospitalization Cumulative Rates (per 100,000) by Age-Group and Admission Week, 2015-2016 Season

