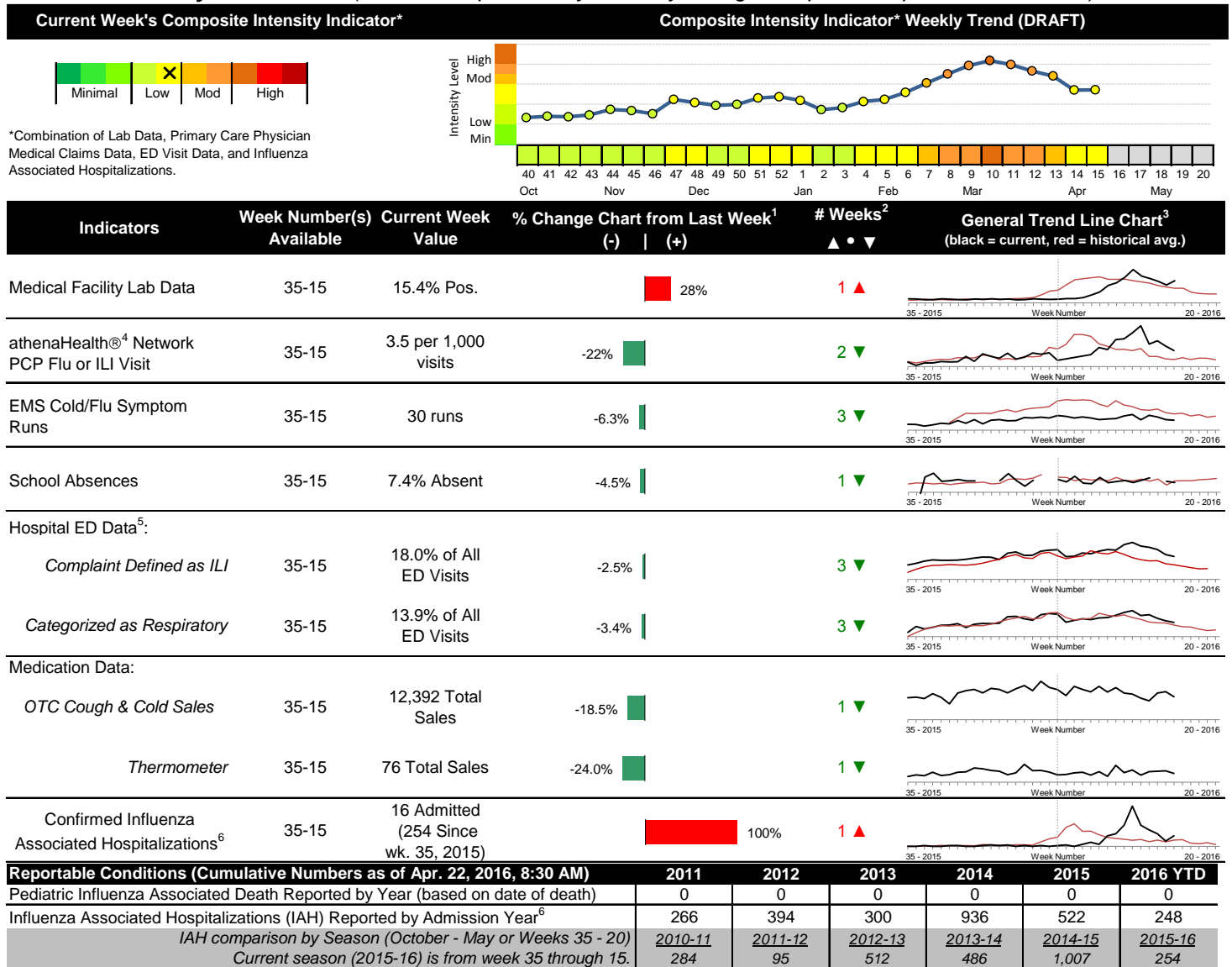


## 2015-2016 Columbus & Franklin County Seasonal Influenza Activity Weekly Summary (Week 15, Apr 10<sup>th</sup>, 2016– Apr 16<sup>th</sup>, 2016)

### Highlights

- In week 15 of 2016, the majority of individual local flu activity indicator trends decreased. Notable increases were lab positives and influenza-associated hospitalizations. As a whole, flu intensity was similar to last week and was low.
- Geographic spread and local intensity designation (Click [here](#) for definitions) = REGIONAL, LOW
- Local medical facility labs reported 1,282 tests run with 198 (15.4%) positive results for week 15 of 2016. This is higher than last week's 12.1% and is higher than the weekly baseline.
- The percentage of ED visits for both influenza-like-illness (ILI) and respiratory symptoms decreased slightly compared to week 14. The percentage of ED visits for both ILI and respiratory symptoms are higher than their respective baseline averages for the week.
- In week 15 of 2016, trends for all of categories of local over-the-counter medication sales tracked decreased (decrease in cough and cold, electrolyte, thermometer, chest rub, pediatric anti-fever, adult anti-fever, and throat lozenge sales) compared to last week.
- Nationally in week 15, influenza activity decreased in the United States. Please [visit the CDC website for specific information](#) (National data is usually updated on Friday of each week).

### Local Flu Activity Dashboard *(All data are preliminary and may change as updated reports are received.)*



<sup>1</sup>Interpret with caution. Indicators with small numbers subject to large weekly percentage fluctuations.

<sup>2</sup>Number of weeks "▲" = Increase (>2%), "▼" = Decrease (>2%), "•" = Stable (-2% to +2%).

<sup>3</sup>Black line is current years data. Based on data availability, red line is historical average (excluding pandemic year).

<sup>4</sup>Data Source: Medical claims data from athenaHealth® ([www.athenahealth.com](http://www.athenahealth.com)). Rate of Flu or ILI visits to Franklin County, OH athenaHealth® network primary care practices/physicians. Claims data are subject to filing and processing time lags. Historical data are updated when they are received.

<sup>5</sup>Franklin County, OH residents only (based on zipcode). NOTE: Excludes one hospital system included in the past due to technical changes affecting visit classification assignment and numbers.

<sup>6</sup>Confirmed cases only. Based on jurisdiction equal to Franklin County or City of Columbus and admission date available in ODRS.

### **CDC 122-Cities Mortality Reporting System: Pneumonia and Influenza (P&I) Mortality**

In week 15 of 2016, 5.0% of all Columbus and Franklin County deaths were attributed to pneumonia and influenza. Nationally in week 15, 7.7% of deaths reported were attributed to pneumonia and influenza. This national percentage was above the national epidemic threshold for week 15.

### **Influenza Morbidity and Influenza-Like Illness (ILI) Reports**

In week 15, the preliminary local influenza and influenza-like-illness (ILI) visit rate to athenaHealth® providers (3.5 per 1,000 visits) decreased compared to the previous week and is above its baseline average for the week (Figure 1). The week 15 percentage of all Emergency Department (ED) visits categorized as ILI decreased slightly compared to the previous week (Figure 3) and is higher than its historic baseline for the week.

Nationally, during week 15 of 2016, 2.1% of patient visits reported through ILINet were due to influenza-like illness (ILI). The percentage is at the national baseline of 2.1% for week 15.

### **Laboratory Surveillance**

During week 15 of 2016, reporting Franklin County sentinel medical facility laboratories tested 1,282 specimens, with 198 (15.4%) positive (Figure 4). The total number of tests done by local reporting labs from week 35 of 2014 through week 15 of 2016 is 35,188 with 2,895 (8.2%) positives (2,425 type A, 466 type B, 4 both A and B, 0 type unknown).

Nationally in week 15 of 2016, clinical laboratories reported 16,840 specimens tested for influenza viruses, 2,258 (13.4%) of which were positive (1,191 type A, 1,067 type B). Public health laboratories reported testing 893 specimens, 337 of which were positive (189 type A – of which 141 were A(H1N1)pdm09, 34 were A/H3, and 14 were not subtyped; 148 type B – of which 54 were Yamagata lineage, 32 were Victoria lineage, and 62 where lineage was not performed). Please visit the CDC website for more information, including cumulative data since week 40.

Week 15 ODH lab data was not available at the time of this report. In week 14 of 2016, participating Ohio clinical labs reported 29,638 specimens tested for influenza this season thus far. Positive results include: (464) A(H1N1)pdm09; (12) A/H3N2; (1,649) Flu A Not Subtyped, and (474) Flu B (through 4/9/16). ODH Public Health Lab reported 510 specimens tested for influenza from various submitters this season thus far. Positive results include: (279) A(H1N1)pdm09; (10) A/H3N2; (51) Influenza B (through 4/9/16). Please visit the ODH website for more information.

### **ED Respiratory Visits**

In the 15<sup>th</sup> week of 2016, the percentage of all ED visits categorized as respiratory decreased slightly compared to the percentage seen the previous week and is slightly higher than its historic baseline for the week (Figure 5).

### **Over-the-Counter (OTC) Medication Sales**

In week 15 of 2016, trends for all of the categories of local over-the-counter medication sales tracked decreased (decrease in cough and cold, electrolyte, thermometer, chest rub, pediatric anti-fever, adult anti-fever, and throat lozenge sales) compared to last week.

### **Additional Influenza Activity Web Links:**

Ohio Seasonal Flu Surveillance: <http://www.odh.ohio.gov/features/odhfeatures/seasflu/ohfluactivity.aspx>

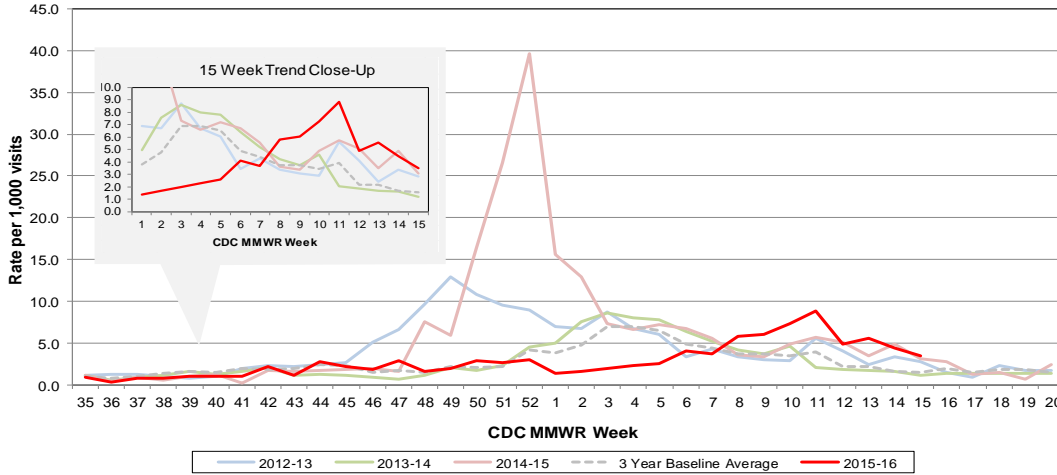
CDC National Seasonal Flu Surveillance Reports: <http://www.cdc.gov/flu/weekly/>

CDC International Flu Activity Map: <http://www.cdc.gov/flu/international/activity.htm>

World Health Organization Situation Updates: [http://www.who.int/influenza/surveillance\\_monitoring/en/](http://www.who.int/influenza/surveillance_monitoring/en/)

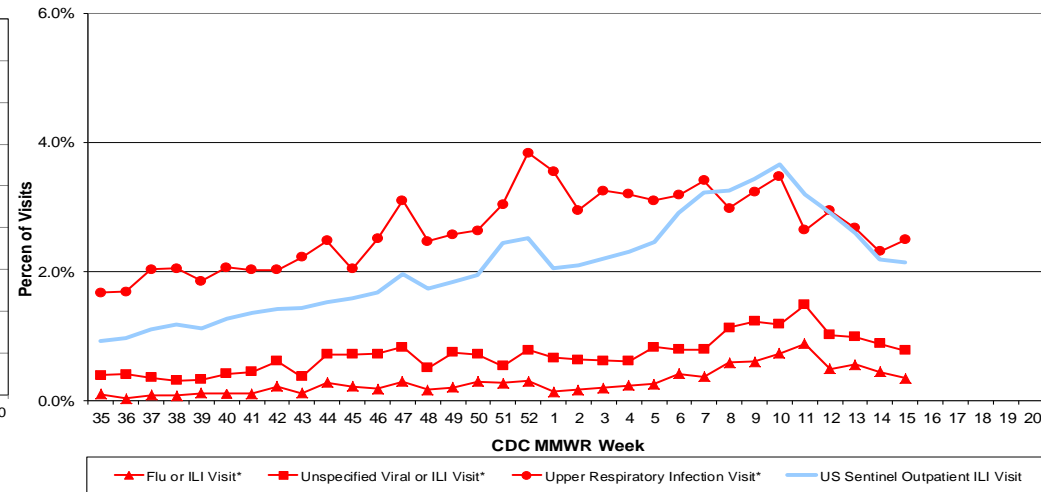
# Columbus & Franklin County Influenza Monitoring Summary – Week 15, 2016 (4/10/2016-4/16/2016)

**Figure 1: Local Participating Outpatient Primary Care Provider Influenza or Influenza-Like-Illness Visit Rate\*, Franklin County, OH**



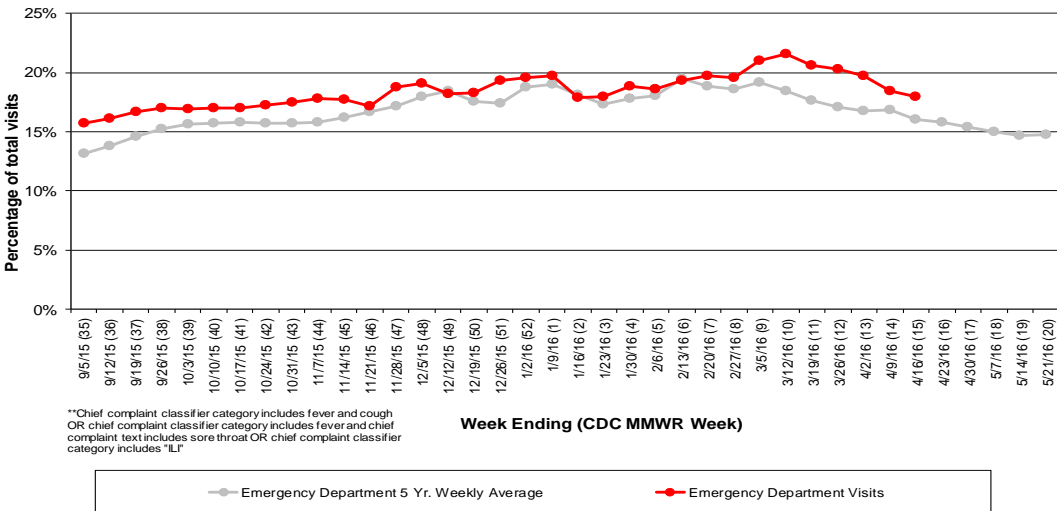
\*Source: Medical Claims data from athenaHealth®  
 Note: athenaHealth® claims data are subject to filing and processing time lags. Historical data are updated when they are received.

**Figure 2: Percentage of Local Outpatient Participating Provider\* and CDC National Outpatient Sentinel Health Care Provider Site visits for ILI and Associated Illnesses, 2015-16**



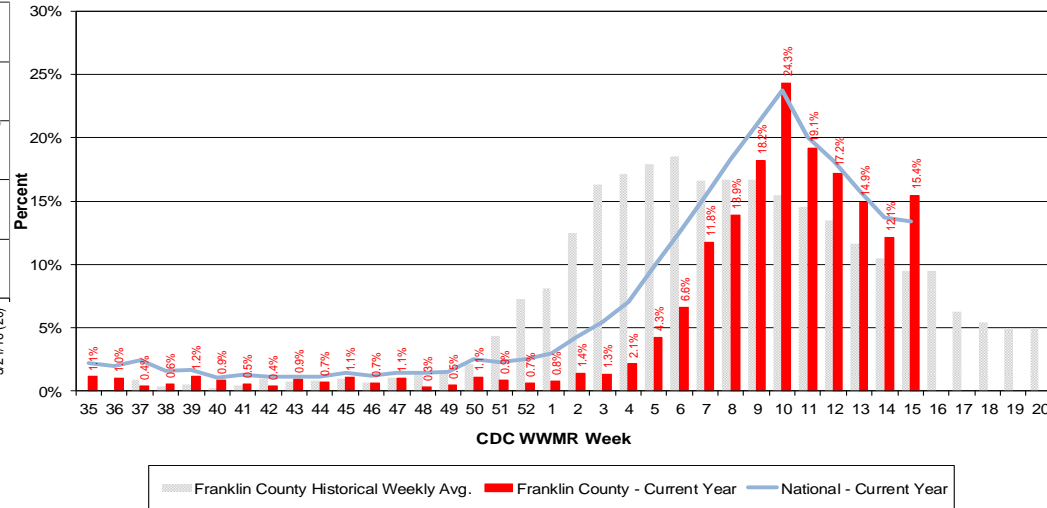
\*Source: Local medical claims data provided by athenaHealth®  
 Note: athenaHealth® claims data are subject to filing and processing time lags. Historical data are updated when they are received.

**Figure 3: Franklin County Resident ILI Defined\*\* ED Visits, 2015-16, Franklin County, OH**



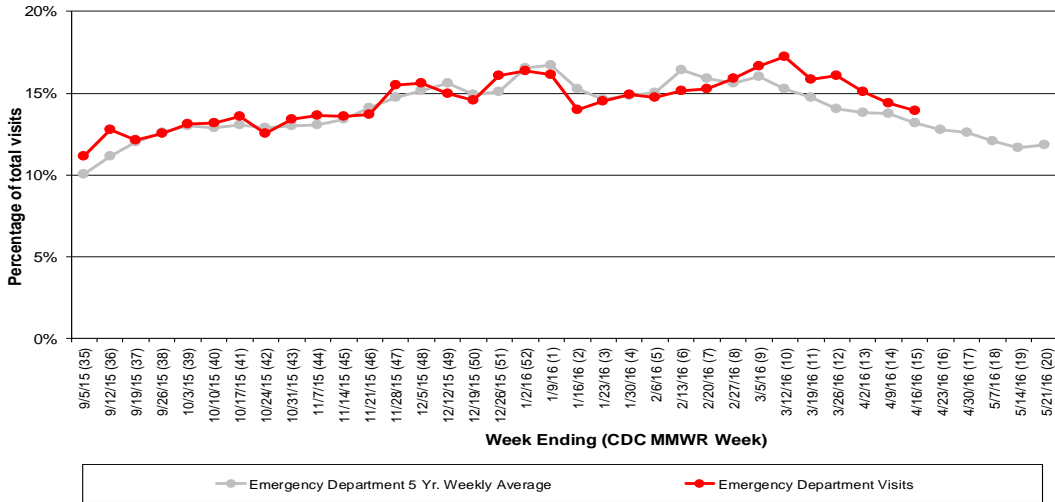
\*\*Chief complaint classifier category includes fever and cough  
 OR chief complaint classifier category includes fever and chief  
 complaint text includes sore throat OR chief complaint classifier  
 category includes "ILI"

**Figure 4: Percentage of Local Reporting and National Laboratory Positive Influenza Tests by Week, 2015-16**

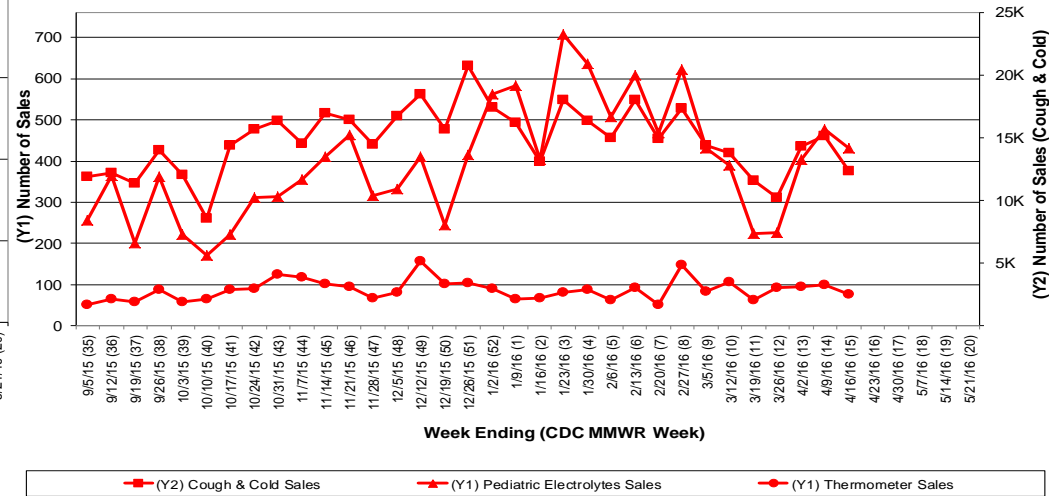


## Columbus & Franklin County Influenza Monitoring Summary – Week 15, 2016 (4/10/2016-4/16/2016)

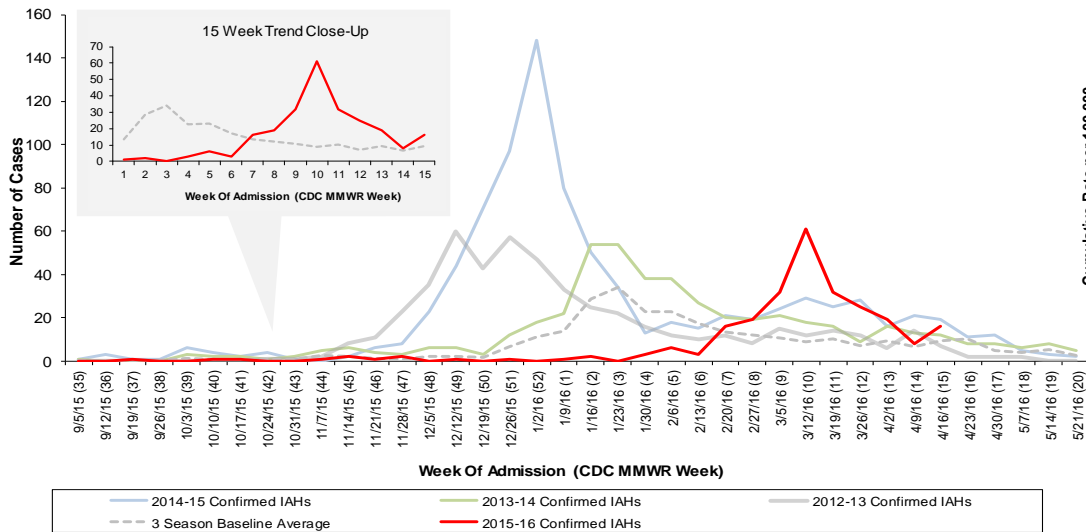
**Figure 5: Franklin County Resident Respiratory ED Visits, 2015-16, Franklin County, OH**



**Figure 6: Selected Number of Over-the-Counter Medication Sales, 2015-16, Franklin County, OH**



**Figure 7: Franklin County Confirmed Influenza Associated Hospitalizations by Hospital Admission Week (As of 8:30 AM, 4/22/2016)**



**Franklin County, OH, Confirmed Influenza Hospitalization Cumulative Rates (per 100,000) by Age-Group and Admission Week, 2015-2016 Season**

