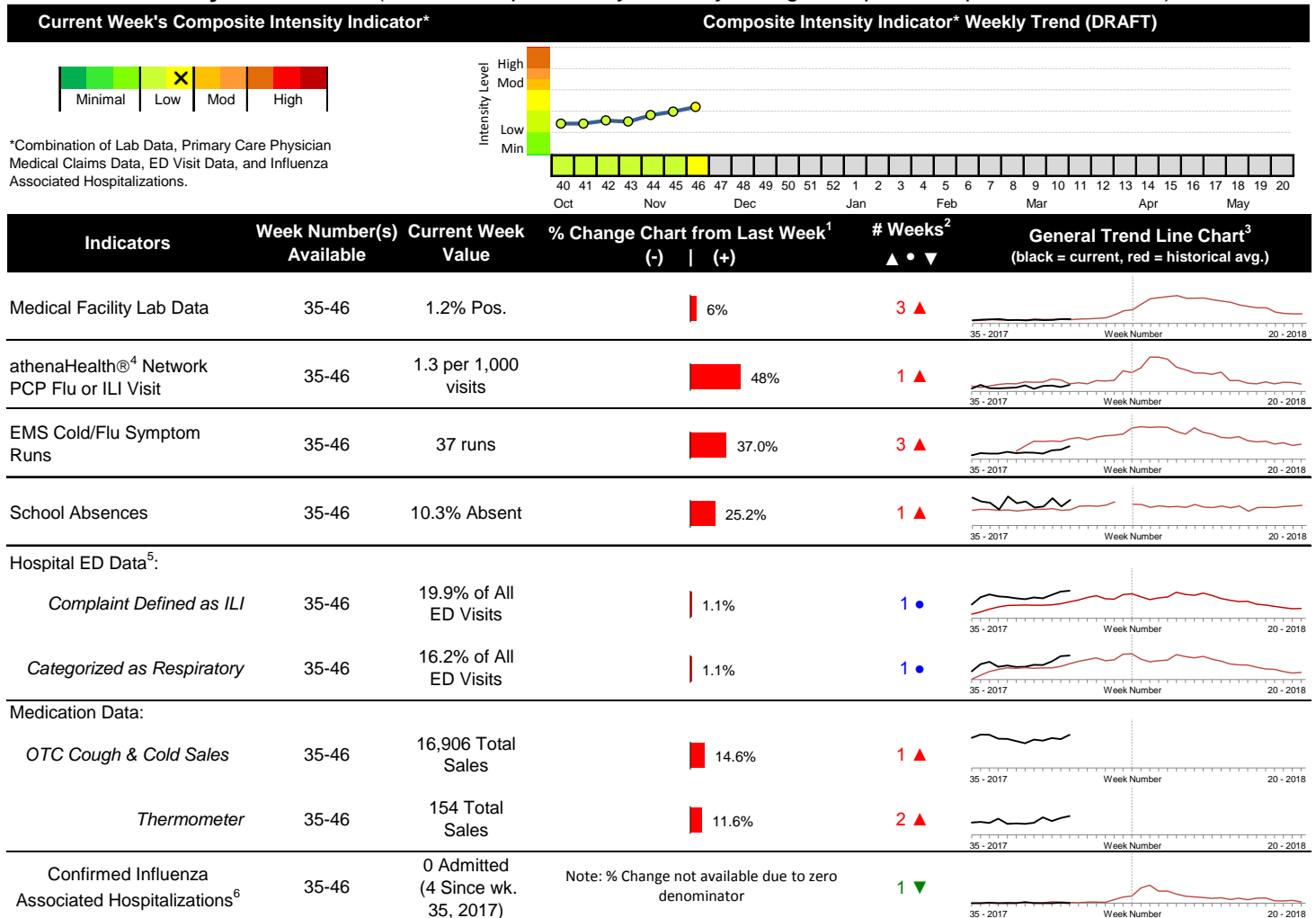


2017-2018 Columbus & Franklin County Seasonal Influenza Activity Weekly Summary (Week 46, Nov. 12th, 2017– Nov. 18th, 2017)

Highlights

- In week 46 of 2017, the individual local flu activity indicator values were mixed compared to last week. As a whole, flu intensity (composite indicator) increased compared to last week and continues to be low.
- Geographic spread and local intensity designation (Click [here](#) for definitions) = SPORADIC, LOW
- Local medical facility labs reported 1,139 tests run with 14 (1.23%) positive results for week 46 of 2017.
- The percentage of ED visits for both influenza-like-illness (ILI) and respiratory symptoms were stable compared to last week. The percentage of ED visits for both ILI and respiratory symptoms were above their respective baseline averages for the week.
- In week 46 of 2017, the majority of trends for categories of local over-the-counter medication sales tracked increased (increase in cough and cold, thermometer, chest rub, adult anti-fever, pediatric anti-fever, and chest rub sales; decrease in electrolyte sales) compared to last week.
- Updated week 46 National influenza activity was not available at the time of this report. Please [visit the CDC website for specific information](#) (National data is usually updated on Friday of each week).

Local Flu Activity Dashboard *(All data are preliminary and may change as updated reports are received.)*



Reportable Conditions (Cumulative Numbers as of Nov 19, 2017)	2012	2013	2014	2015	2016	2017 YTD
Pediatric Influenza Associated Death Reported by Year (based on date of death)	0	0	0	0	0	0
Influenza Associated Hospitalizations (IAH) Reported by Admission Year ⁶	394	301	875	448	292	607
<i>IAH comparison by Season (October - May or Weeks 35 - 20)</i>	<u>2012-13</u>	<u>2013-14</u>	<u>2014-15</u>	<u>2015-16</u>	<u>2016-17</u>	<u>2017-18</u>
<i>Current season (2017-18) is from week 35 through week 46.</i>	512	486	872	264	625	4

¹Interpret with caution. Indicators with small numbers subject to large weekly percentage fluctuations.

²Number of weeks "▲" = Increase (>2%), "▼" = Decrease (>2%), "●" = Stable (-2% to +2%).

³Black line is current years data. Based on data availability, red line is historical average (excluding pandemic year).

⁴Data Source: Medical claims data from athenaHealth® (www.athenahealth.com). Rate of Flu or ILI visits to Franklin County, OH athenaHealth® network primary care practices/physicians. Claims data are subject to filing and processing time lags. Historical data are updated when they are received.

⁵Franklin County, OH residents only (based on zipcode). NOTE: Excludes one hospital system included in the past due to technical changes affecting visit classification assignment and numbers.

⁶Confirmed cases only. Based on jurisdiction equal to Franklin County or City of Columbus and admission date available in ODRS.

Influenza Morbidity and Influenza-Like Illness (ILI) Reports

In week 46, the preliminary local influenza and influenza-like-illness (ILI) visit rate to athenaHealth® providers (1.3 per 1,000 visits) increased compared to the previous week and is close to its baseline average for the week (Figure 1). The week 46 percentage of all Emergency Department (ED) visits categorized as ILI was stable compared to the previous week (Figure 3) and is above its historic baseline for the week.

Updated week 46 National ILINet data was not available at the time of this report. During week 45 of 2017, 1.9% of patient visits reported through ILINet were due to influenza-like illness (ILI). The percentage is below the national baseline of 2.2% for week 45.

Laboratory Surveillance

During week 46 of 2017, reporting Franklin County sentinel medical facility laboratories tested 1,139 specimens, with 14 (1.23%) positive (Figure 4). The total number of tests done by local reporting labs from week 35 of 2017 through week 46 of 2017 is 9,186 with 65 (0.71%) positives (37 type A, 26 type B, 1 type A and B, 1 type unknown).

Updated week 46 National lab data was not available at the time of this report. Nationally in week 45 of 2017, clinical laboratories reported 15,254 specimens tested for influenza viruses, 677 (4.4%) of which were positive (507 type A, 170 type B). Public health laboratories reported testing 714 specimens, 173 of which were positive (154 type A – of which 12 were A(H1N1)pdm09, 135 were A/H3, and 7 were not subtyped; 19 type B – of which 8 were Yamagata lineage, 2 were Victoria lineage, and 9 where lineage was not performed). Please visit the CDC website for more information, including cumulative data.

Week 46 updated Ohio clinical labs were not available at the time of this report. In week 45, Ohio clinical labs reported 7,097 specimens tested for influenza this season thus far. Positive results include: (0) A(H1N1)pdm09; (2) A/H3N2; (40) Flu A Not Subtyped, and (19) Flu B (through 11/16/17). In week 46, ODH Public Health Lab reported 16 specimens tested for influenza from various submitters this season thus far. Positive results include: (1) A(H1N1)pdm09; (8) A/H3N2; (0) Influenza B (through 11/18/17). Please visit the ODH website for more information.

ED Respiratory Visits

In the 46th week of 2017, the percentage of all ED visits categorized as respiratory was stable compared to the percentage seen the previous week and is above its historic baseline for the week (Figure 5).

Over-the-Counter (OTC) Medication Sales

In week 46 of 2017, the majority of trends for categories of local over-the-counter medication sales tracked increased (increase in cough and cold, thermometer, chest rub, adult anti-fever, pediatric anti-fever, and chest rub sales; decrease in electrolyte sales) compared to last week.

Additional Influenza Activity Web Links:

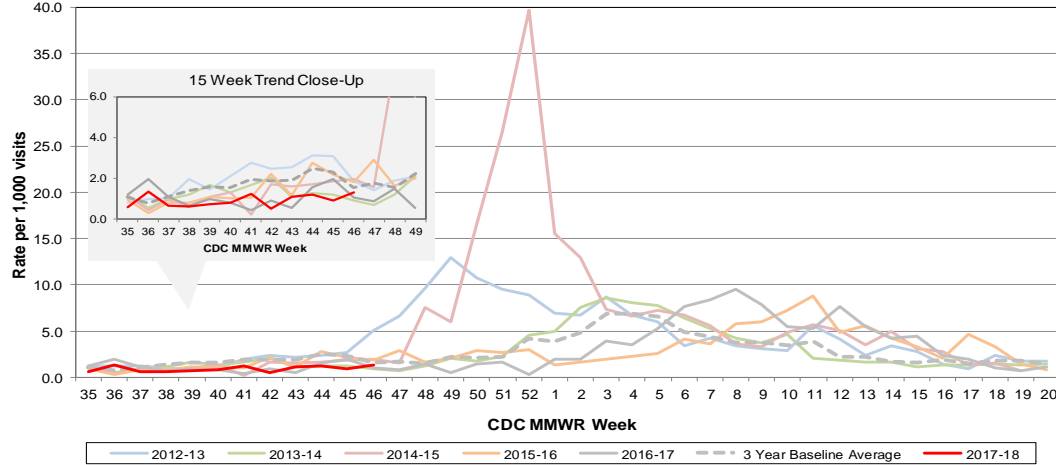
Ohio Seasonal Flu Surveillance: <http://www.odh.ohio.gov/seasflu/Ohio%20Flu%20Activity.aspx>

CDC National Seasonal Flu Surveillance Reports: <http://www.cdc.gov/flu/weekly/>

World Health Organization Situation Updates: http://www.who.int/influenza/surveillance_monitoring/en/

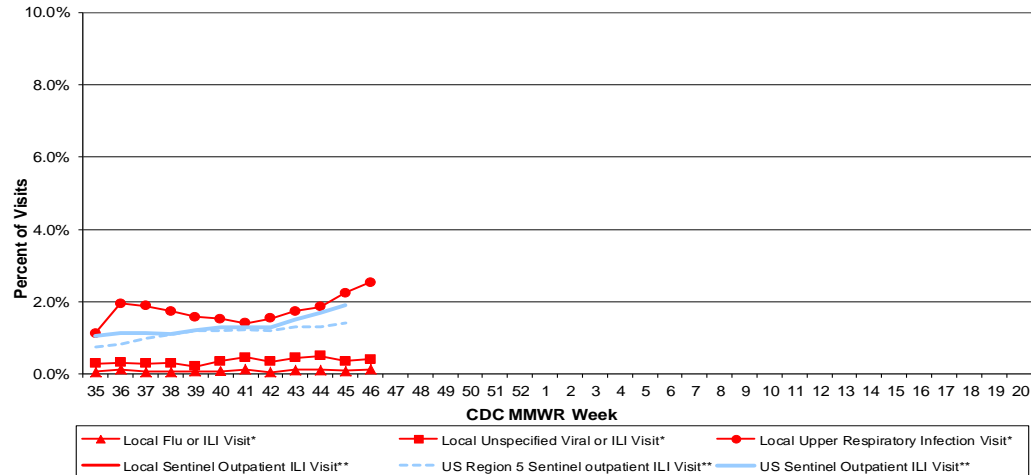
Columbus & Franklin County Influenza Monitoring Summary – Week 46, 2017 (11/12/2017-11/18/2017)

Figure 1: Local Participating Outpatient Primary Care Provider Influenza or Influenza-Like Illness Visit Rate[†], Franklin County, OH



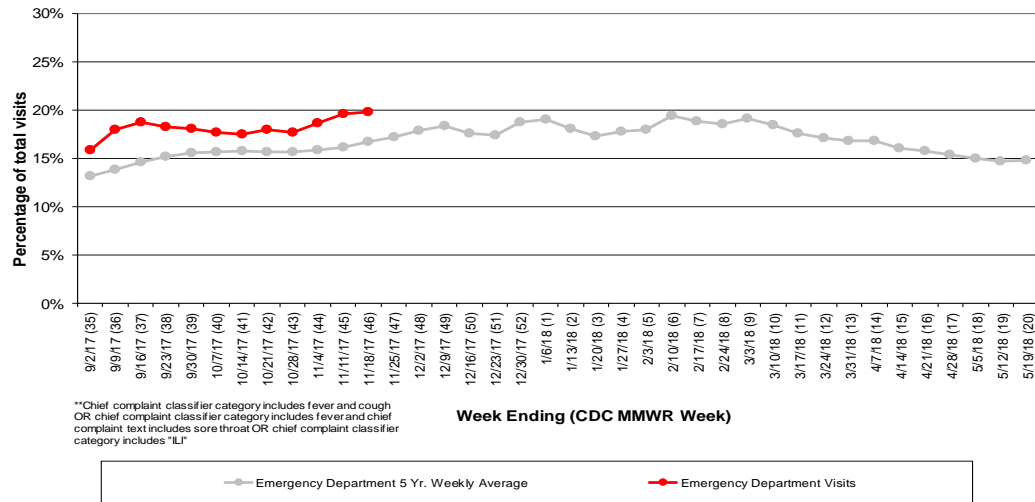
*Source: Medical Claims data from athenaHealth®
 Note: athenaHealth® claims data are subject to filing and processing time lags. Historical data are updated when they are received.

Figure 2: Percentage of Local Outpatient Participating Provider* and CDC National Outpatient Sentinel Health Care Provider Site visits for ILI and Associated Illnesses, 2017-18**



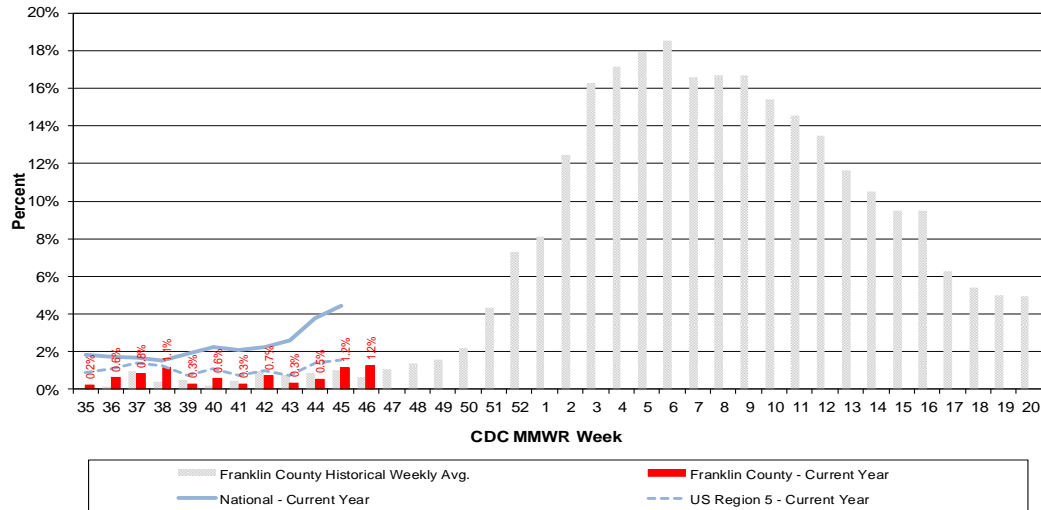
*Source: Local medical claims data provided by athenaHealth®. Data are subject to filing and processing time lags. Historical data are updated when received.
 **Source: U.S. Outpatient Influenza-like Illness Surveillance Network (ILINet) sentinel provider visits

Figure 3: Franklin County Resident ILI Defined ED Visits, 2017-18, Franklin County, OH**



**Chief complaint classifier category includes fever and cough
 OR chief complaint classifier category includes fever and chief complaint text includes sore throat OR chief complaint classifier category includes "ILI"

Figure 4: Percentage of Local Reporting and National Laboratory Positive Influenza Tests by Week, 2017-18



Columbus & Franklin County Influenza Monitoring Summary – Week 46, 2017 (11/12/2017-11/18/2017)

Figure 5: Franklin County Resident Respiratory ED Visits, 2017-18, Franklin County, OH

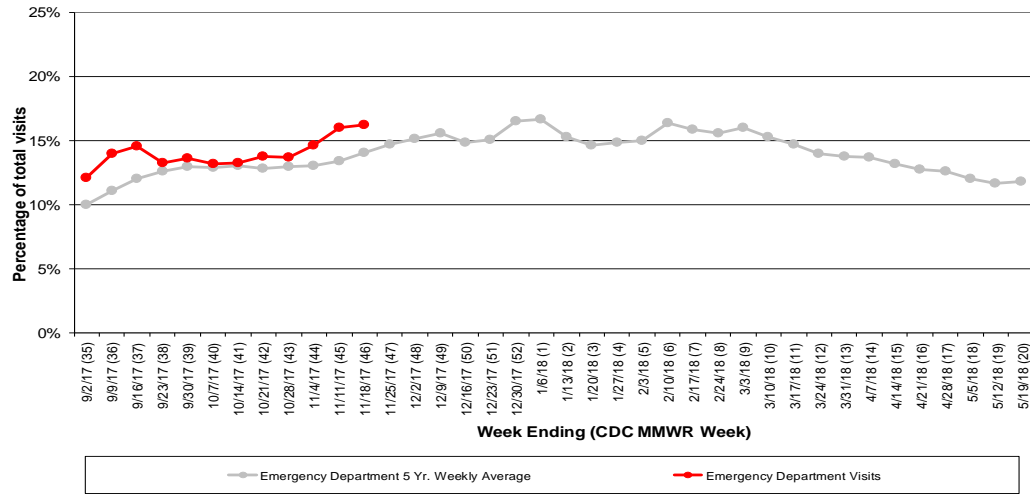


Figure 6: Selected Number of Over-the-Counter Medication Sales, 2017-18, Franklin County, OH

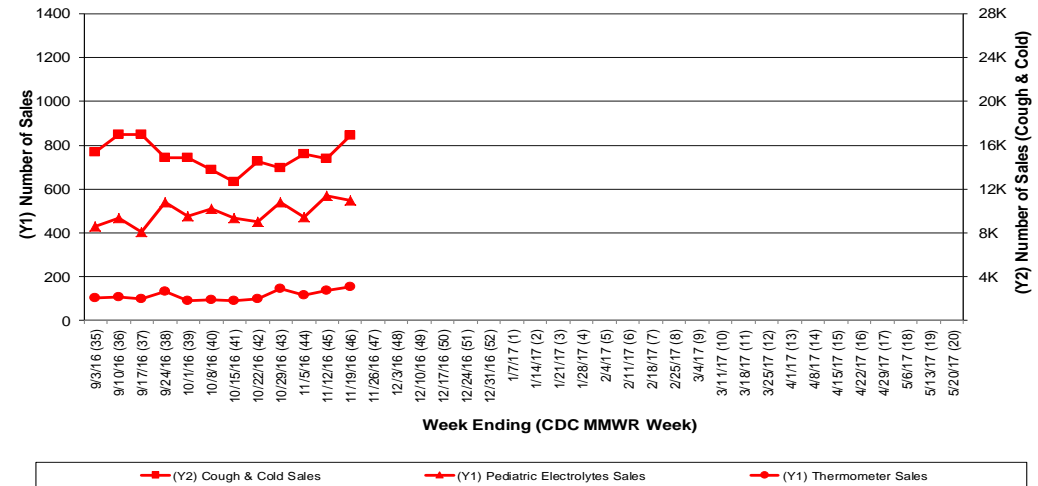
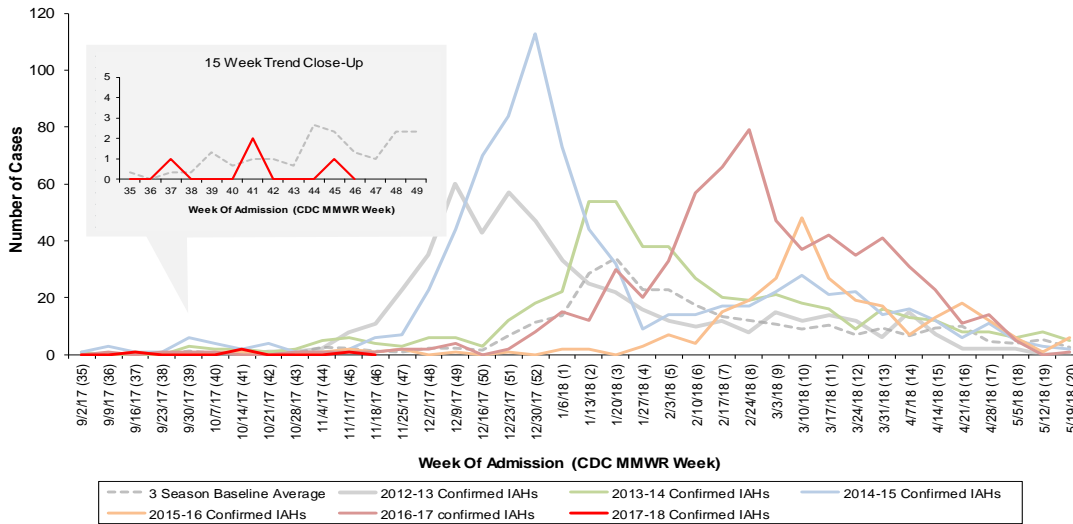


Figure 7: Franklin County Confirmed Influenza Associated Hospitalizations by Hospital Admission Week (As of 11/19/2017)



Franklin County, OH, Confirmed Influenza Hospitalization Cumulative Rates (per 100,000) by Age-Group and Admission Week, 2017-2018 Season

