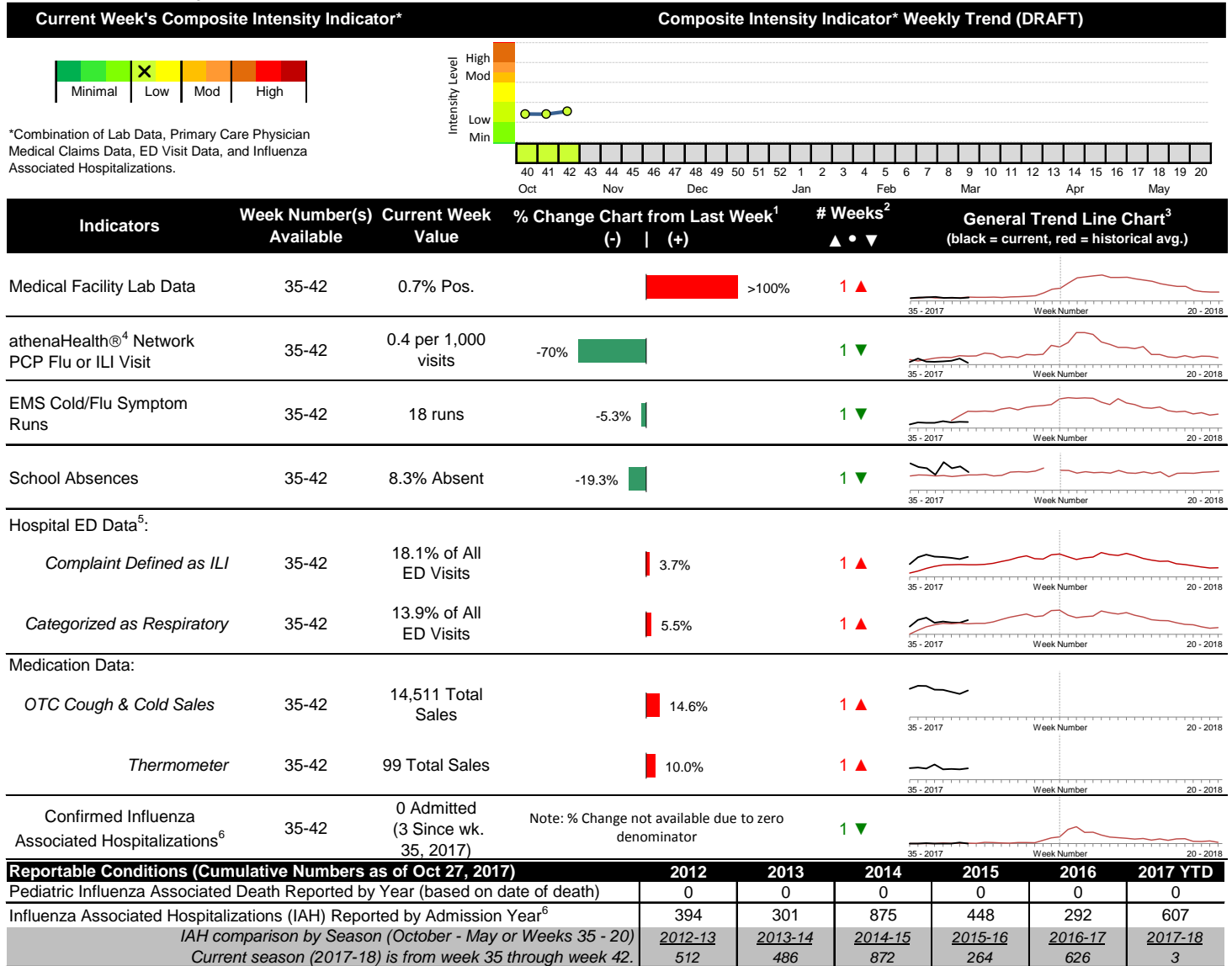


## 2017-2018 Columbus & Franklin County Seasonal Influenza Activity Weekly Summary (Week 42, Oct. 15<sup>th</sup>, 2017– Oct. 21<sup>st</sup>, 2017)

### Highlights

- In week 42 of 2017, the individual local flu activity indicator trends were mixed compared to last week. As a whole, flu intensity (composite indicator) increased slightly, but remained low for the week.
- Geographic spread and local intensity designation (Click [here](#) for definitions) = SPORADIC, LOW
- Local medical facility labs reported 811 tests run with 6 (0.7%) positive results for week 42 of 2017.
- The percentage of ED visits for both influenza-like-illness (ILI) and respiratory symptoms increased slightly compared to last week. The percentage of ED visits for both ILI and respiratory symptoms were above their respective baseline averages for the week.
- In week 42 of 2017, the majority of trends for categories of local over-the-counter medication sales tracked increased (increase in cough and cold, thermometer, chest rub, pediatric anti-fever, adult anti-fever, and throat lozenge sales; decrease in electrolyte sales) compared to last week.
- Nationally, influenza activity was low. Please [visit the CDC website for specific information](#) (National data is usually updated on Friday of each week).

### Local Flu Activity Dashboard *(All data are preliminary and may change as updated reports are received.)*



<sup>1</sup>Interpret with caution. Indicators with small numbers subject to large weekly percentage fluctuations.

<sup>2</sup>Number of weeks "▲" = Increase (>2%), "▼" = Decrease (>2%), "•" = Stable (-2% to +2%).

<sup>3</sup>Black line is current years data. Based on data availability, red line is historical average (excluding pandemic year).

<sup>4</sup>Data Source: Medical claims data from athenaHealth® (www.athenahealth.com). Rate of Flu or ILI visits to Franklin County, OH athenaHealth® network primary care practices/physicians. Claims data are subject to filing and processing time lags. Historical data are updated when they are received.

<sup>5</sup>Franklin County, OH residents only (based on zipcode). NOTE: Excludes one hospital system included in the past due to technical changes affecting visit classification assignment and numbers.

<sup>6</sup>Confirmed cases only. Based on jurisdiction equal to Franklin County or City of Columbus and admission date available in ODRS.

## **Influenza Morbidity and Influenza-Like Illness (ILI) Reports**

In week 42, the preliminary local influenza and influenza-like-illness (ILI) visit rate to athenaHealth® providers (0.4 per 1,000 visits) decreased compared to the previous week and is below its baseline average for the week (Figure 1). The week 42 percentage of all Emergency Department (ED) visits categorized as ILI increased slightly compared to the previous week (Figure 3) and is above its historic baseline for the week.

Nationally, during week 42 of 2017, 1.3% of patient visits reported through ILINet were due to influenza-like illness (ILI). The percentage is below the national baseline of 2.2% for week 42.

## **Laboratory Surveillance**

During week 42 of 2017, reporting Franklin County sentinel medical facility laboratories tested 811 specimens, with 6 (0.7%) positive (Figure 4). The total number of tests done by local reporting labs from week 35 of 2017 through week 42 of 2017 is 5,183 with 31 (0.6%) positives (14 type A, 17 type B, 0 type A and B, 0 type unknown).

Nationally in week 42 of 2017, clinical laboratories reported 11,136 specimens tested for influenza viruses, 274 (2.5%) of which were positive (188 type A, 86 type B). Public health laboratories reported testing 571 specimens, 81 of which were positive (78 type A – of which 3 were A(H1N1)pdm09, 69 were A/H3, and 6 were not subtyped; 3 type B – of which 2 were Yamagata lineage, 0 were Victoria lineage, and 1 where lineage was not performed). Please visit the CDC website for more information, including cumulative data.

In week 42 of 2017, participating Ohio clinical labs reported 3,262 specimens tested for influenza this season thus far. Positive results include: (0) A(H1N1)pdm09; (1) A/H3N2; (21) Flu A Not Subtyped, and (14) Flu B (through 10/21/17). ODH Public Health Lab reported 1 specimen tested for influenza from various submitters this season thus far. Positive results include: (1) A(H1N1)pdm09; (0) A/H3N2; (0) Influenza B (through 10/21/17). Please visit the ODH website for more information.

## **ED Respiratory Visits**

In the 42<sup>nd</sup> week of 2017, the percentage of all ED visits categorized as respiratory increased compared to the percentage seen the previous week and is above its historic baseline for the week (Figure 5).

## **Over-the-Counter (OTC) Medication Sales**

In week 42 of 2017, the majority of trends for categories of local over-the-counter medication sales tracked increased (increase in cough and cold, thermometer, chest rub, pediatric anti-fever, adult anti-fever, and throat lozenge sales; decrease in electrolyte sales) compared to last week.

## **Additional Influenza Activity Web Links:**

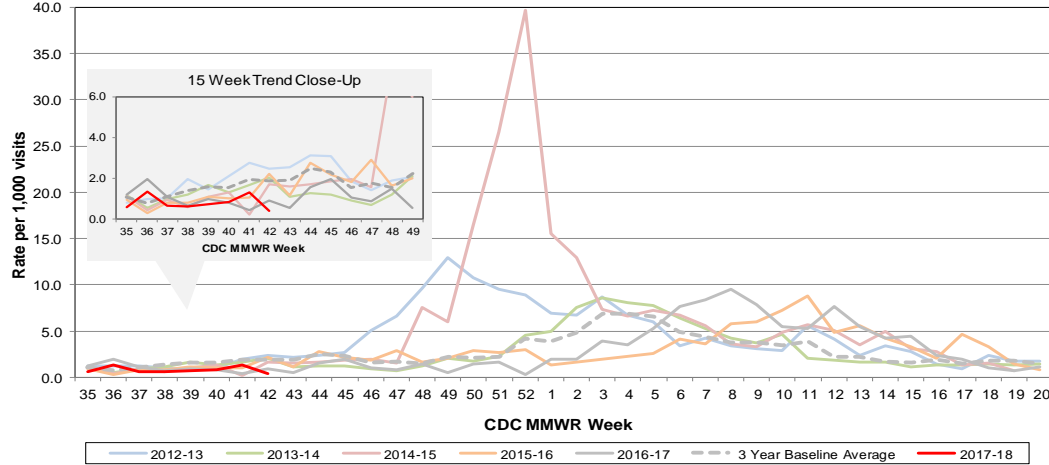
Ohio Seasonal Flu Surveillance: <http://www.odh.ohio.gov/seasflu/Ohio%20Flu%20Activity.aspx>

CDC National Seasonal Flu Surveillance Reports: <http://www.cdc.gov/flu/weekly/>

World Health Organization Situation Updates: [http://www.who.int/influenza/surveillance\\_monitoring/en/](http://www.who.int/influenza/surveillance_monitoring/en/)

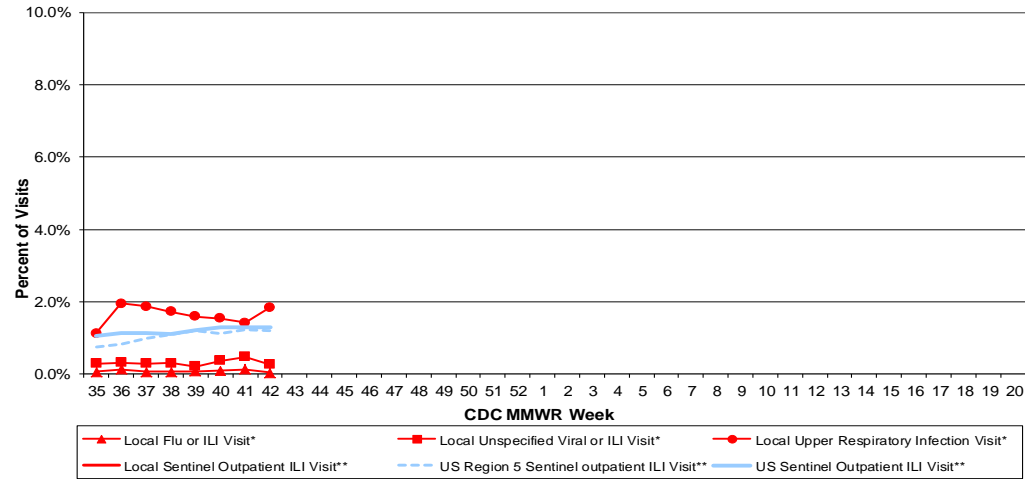
Columbus & Franklin County Influenza Monitoring Summary – Week 42, 2017 (10/15/2017-10/21/2017)

**Figure 1: Local Participating Outpatient Primary Care Provider Influenza or Influenza-Like Illness Visit Rate\*, Franklin County, OH**



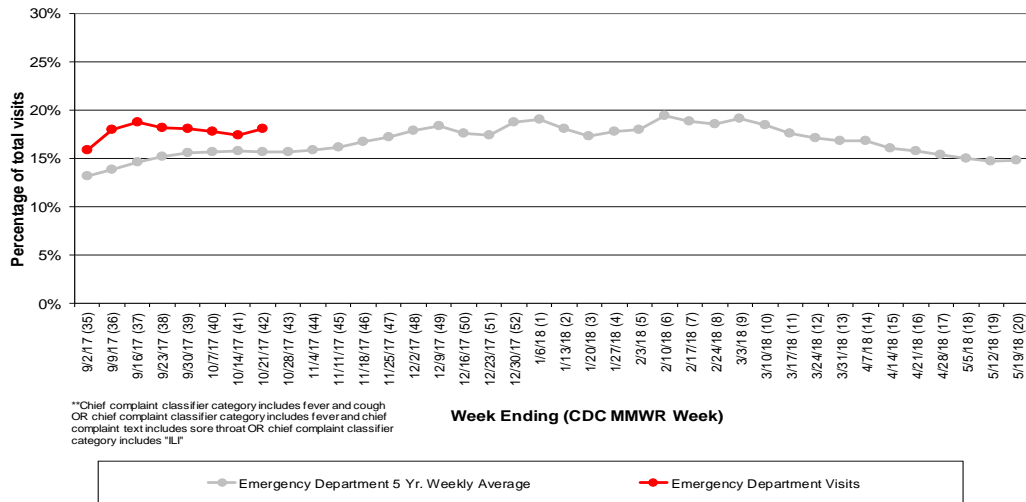
\*Source: Medical Claims data from athenaHealth®  
 Note: athenaHealth® claims data are subject to filing and processing time lags. Historical data are updated when they are received.

**Figure 2: Percentage of Local Outpatient Participating Provider\* and CDC National Outpatient Sentinel Health Care Provider\*\* Site Visits for ILI and Associated Illnesses, 2017-18**



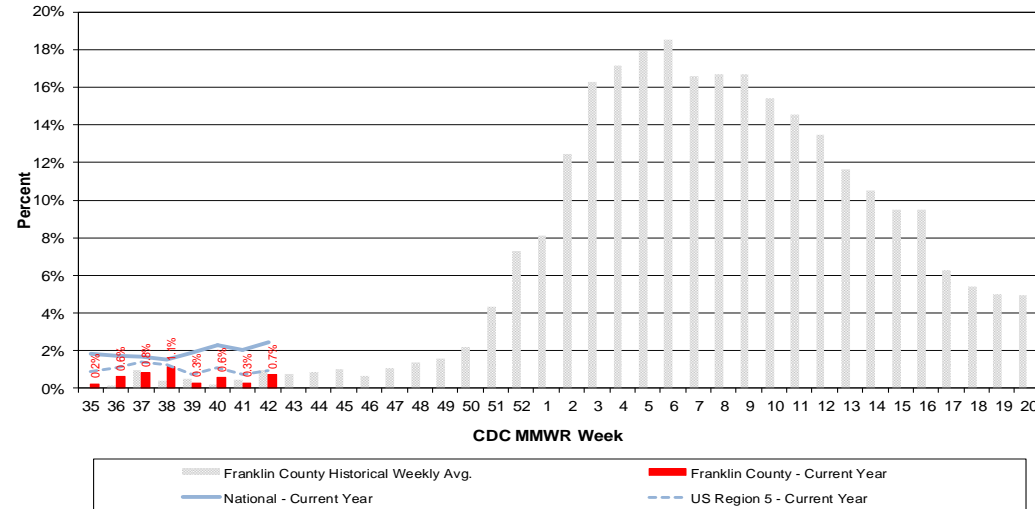
\*Source: Local medical claims data provided by athenaHealth®. Data are subject to filing and processing time lags. Historical data are updated when received.  
 \*\*Source: U.S. Outpatient Influenza-like Illness Surveillance Network (ILINet) sentinel provider visits

**Figure 3: Franklin County Resident ILI Defined\*\* ED Visits, 2017-18, Franklin County, OH**



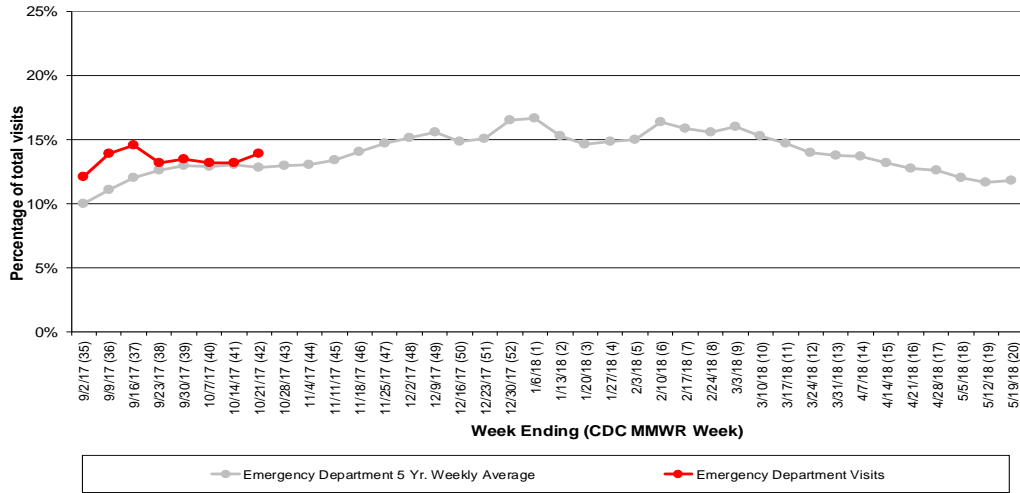
\*\*Chief complaint classifier category includes fever and cough OR chief complaint classifier category includes fever and chief complaint text includes sore throat OR chief complaint classifier category includes "ILI"

**Figure 4: Percentage of Local Reporting and National Laboratory Positive Influenza Tests by Week, 2017-18**

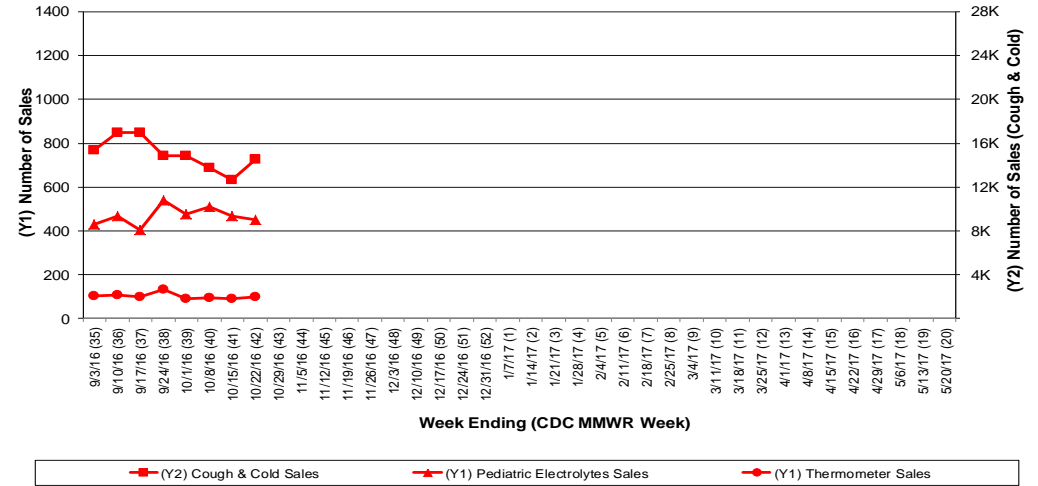


# Columbus & Franklin County Influenza Monitoring Summary – Week 42, 2017 (10/15/2017-10/21/2017)

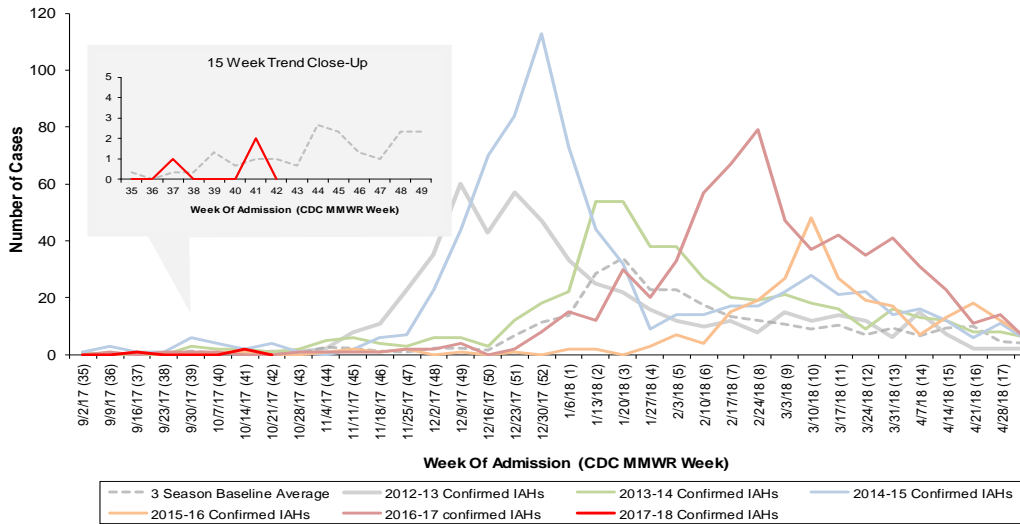
**Figure 5: Franklin County Resident Respiratory ED Visits, 2017-18, Franklin County, OH**



**Figure 6: Selected Number of Over-the-Counter Medication Sales, 2017-18, Franklin County, OH**



**Figure 7: Franklin County Confirmed Influenza Associated Hospitalizations by Hospital Admission Week (As of 10/25/2017)**



**Franklin County, OH, Confirmed Influenza Hospitalization Cumulative Rates (per 100,000) by Age-Group and Admission Week, 2017-2018 Season**

