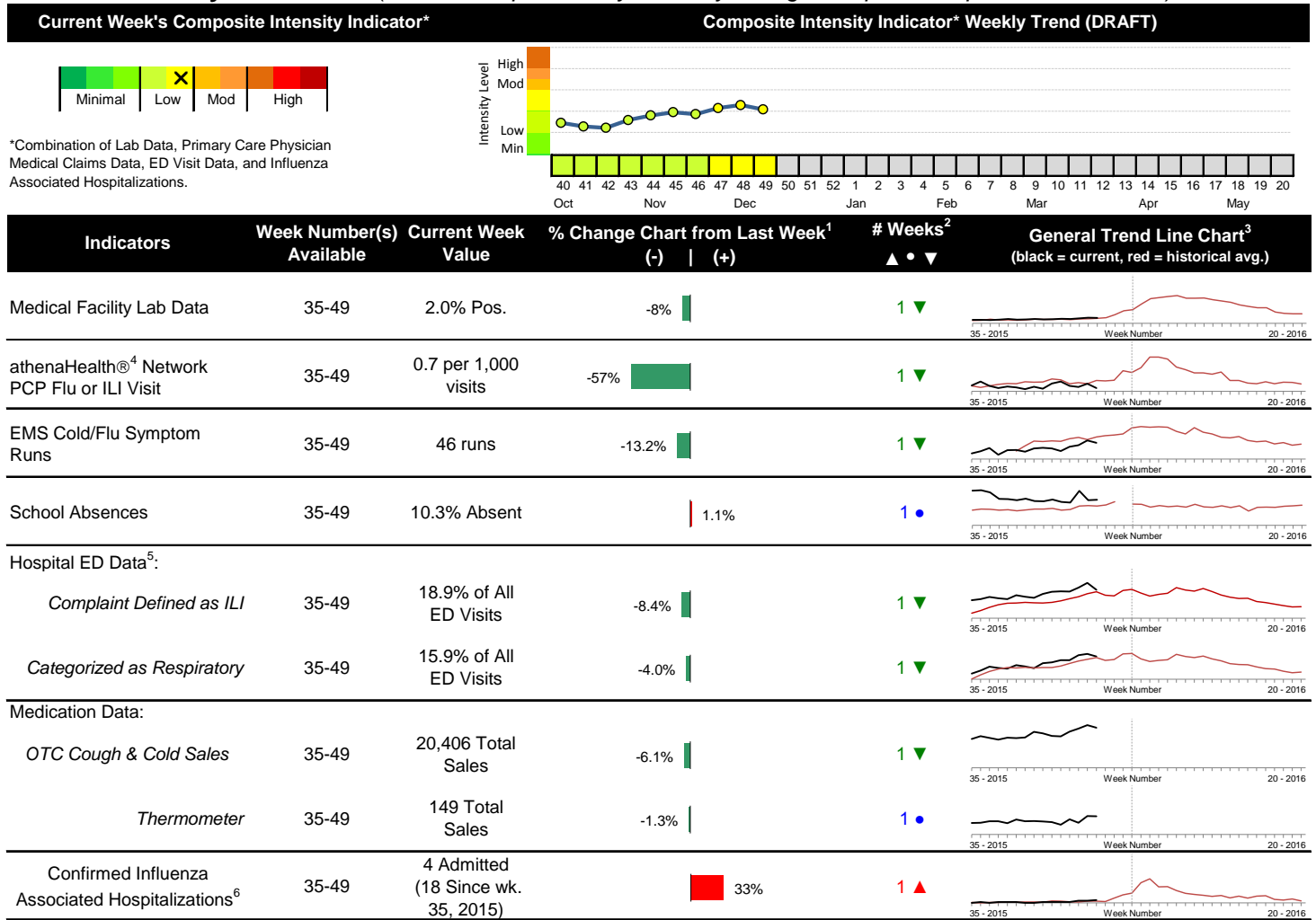


2016-2017 Columbus & Franklin County Seasonal Influenza Activity Weekly Summary (Week 49, Dec. 4th, 2016– Dec. 10th, 2016)

Highlights

- In week 49 of 2016, the majority of individual local flu activity indicator trends decreased. As a whole, flu intensity was low and decreased slightly compared to the past couple weeks.
- Geographic spread and local intensity designation (Click [here](#) for definitions) = REGIONAL, LOW
- Local medical facility labs reported 1,050 tests run with 21 (2.0%) positive results for week 49 of 2016. This is lower than last week's 2.2% and is higher than the weekly baseline.
- The percentage of ED visits for both influenza-like-illness (ILI) and respiratory symptoms decreased compared to week 48. The percentage of ED visits for both ILI and respiratory symptoms are close to their respective baseline averages for the week.
- In week 49 of 2016, the trend for categories of local over-the-counter medication sales tracked were mixed (increase in pediatric anti-fever sales; decrease in cough and cold and chest rub sales; stable electrolyte, thermometer, adult anti-fever, and throat lozenge sales) compared to last week.
- Nationally, influenza activity increased slightly in week 49. Please [visit the CDC website for specific information](#) (National data is usually updated on Friday of each week).

Local Flu Activity Dashboard *(All data are preliminary and may change as updated reports are received.)*



Reportable Conditions (Cumulative Numbers as of Dec. 16, 2016)	2011	2012	2013	2014	2015	2016 YTD
Pediatric Influenza Associated Death Reported by Year (based on date of death)	0	0	0	0	0	0
Influenza Associated Hospitalizations (IAH) Reported by Admission Year ⁶	266	394	301	875	449	285
<i>IAH comparison by Season (October - May or Weeks 35 - 20)</i>	<u>2011-12</u>	<u>2012-13</u>	<u>2013-14</u>	<u>2014-15</u>	<u>2015-16</u>	<u>2016-17</u>
<i>Current season (2016-17) is from week 35 through 49.</i>	95	512	486	873	263	18

¹Interpret with caution. Indicators with small numbers subject to large weekly percentage fluctuations.
²Number of weeks "▲" = Increase (>2%), "▼" = Decrease (>2%), "●" = Stable (-2% to +2%).
³Black line is current years data. Based on data availability, red line is historical average (excluding pandemic year).
⁴Data Source: Medical claims data from athenaHealth® (www.athenahealth.com). Rate of Flu or ILI visits to Franklin County, OH athenaHealth® network primary care practices/physicians. Claims data are subject to filing and processing time lags. Historical data are updated when they are received.
⁵Franklin County, OH residents only (based on zipcode). NOTE: Excludes one hospital system included in the past due to technical changes affecting visit classification assignment and numbers.
⁶Confirmed cases only. Based on jurisdiction equal to Franklin County or City of Columbus and admission date available in ODRS.

Influenza Morbidity and Influenza-Like Illness (ILI) Reports

In week 49, the preliminary local influenza and influenza-like-illness (ILI) visit rate to athenaHealth® providers (0.7 per 1,000 visits) decreased compared to the previous week and is below its baseline average for the week (Figure 1). The week 49 percentage of all Emergency Department (ED) visits categorized as ILI decreased compared to the previous week (Figure 3) and is close to its historic baseline for the week.

Nationally, during week 49 of 2016, 1.9% of patient visits reported through ILINet were due to influenza-like illness (ILI). The percentage is below the national baseline of 2.2% for week 49.

Laboratory Surveillance

During week 49 of 2016, reporting Franklin County sentinel medical facility laboratories tested 1,050 specimens, with 21 (2.0%) positive (Figure 4). The total number of tests done by local reporting labs from week 35 of 2016 through week 49 of 2016 is 10,879 with 131 (1.2%) positives (65 type A, 64 type B, 2 type A and B, 0 type unknown).

Nationally in week 49 of 2016, clinical laboratories reported 15,117 specimens tested for influenza viruses, 728 (4.8%) of which were positive (575 type A, 153 type B). Public health laboratories reported testing 928 specimens, 206 of which were positive (198 type A – of which 6 were A(H1N1)pdm09, 158 were A/H3, and 34 were not subtyped; 8 type B – of which 2 were Yamagata lineage, 3 were Victoria lineage, and 3 where lineage was not performed). Please visit the CDC website for more information, including cumulative data since week 40.

In week 49 of 2016, participating Ohio clinical labs reported 10,917 specimens tested for influenza this season thus far. Positive results include: (0) A(H1N1)pdm09; (4) A/H3N2; (70) Flu A Not Subtyped, and (33) Flu B (through 12/10/16). ODH Public Health Lab reported 73 specimens tested for influenza from various submitters this season thus far. Positive results include: (0) A(H1N1)pdm09; (13) A/H3N2; (2) Influenza B (through 12/10/16). Please visit the ODH website for more information.

ED Respiratory Visits

In the 49th week of 2016, the percentage of all ED visits categorized as respiratory decreased slightly compared to the percentage seen the previous week and is close to its historic baseline for the week (Figure 5).

Over-the-Counter (OTC) Medication Sales

In week 49 of 2016, the trend for categories of local over-the-counter medication sales tracked were mixed (increase in pediatric anti-fever sales; decrease in cough and cold and chest rub sales; stable electrolyte, thermometer, adult anti-fever, and throat lozenge sales) compared to last week.

Additional Influenza Activity Web Links:

Ohio Seasonal Flu Surveillance: <http://www.odh.ohio.gov/features/odhfeatures/seasflu/ohfluactivity.aspx>

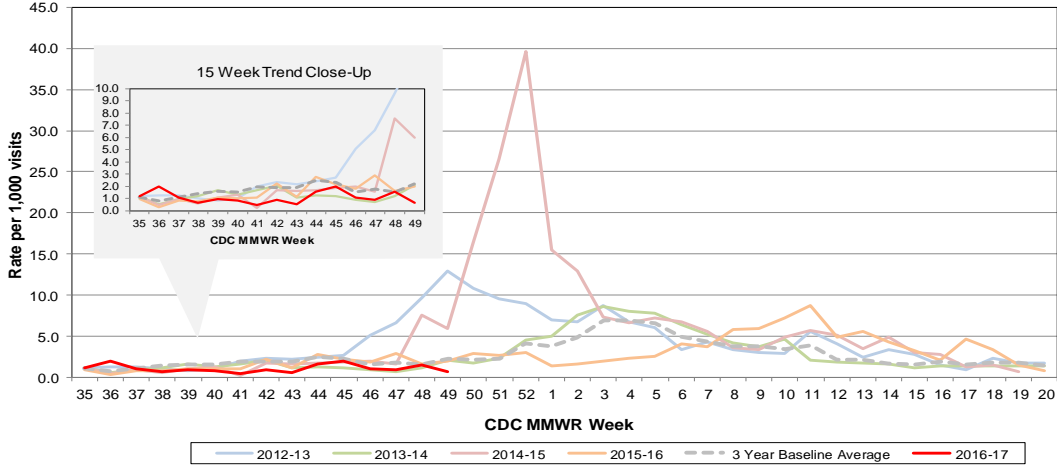
CDC National Seasonal Flu Surveillance Reports: <http://www.cdc.gov/flu/weekly/>

CDC International Flu Activity Map: <http://www.cdc.gov/flu/international/activity.htm>

World Health Organization Situation Updates: http://www.who.int/influenza/surveillance_monitoring/en/

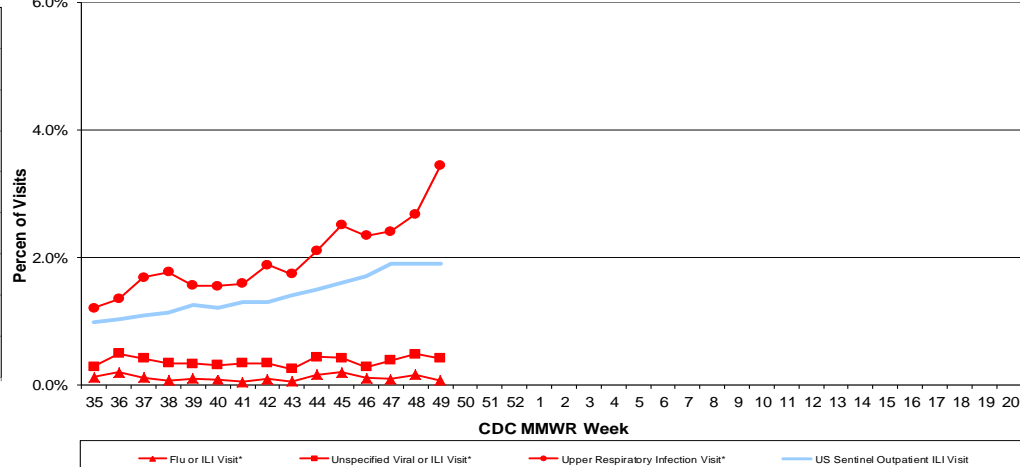
Columbus & Franklin County Influenza Monitoring Summary – Week 49, 2016 (12/4/2016-12/10/2016)

Figure 1: Local Participating Outpatient Primary Care Provider Influenza or Influenza-Like-Illness Visit Rate*, Franklin County, OH



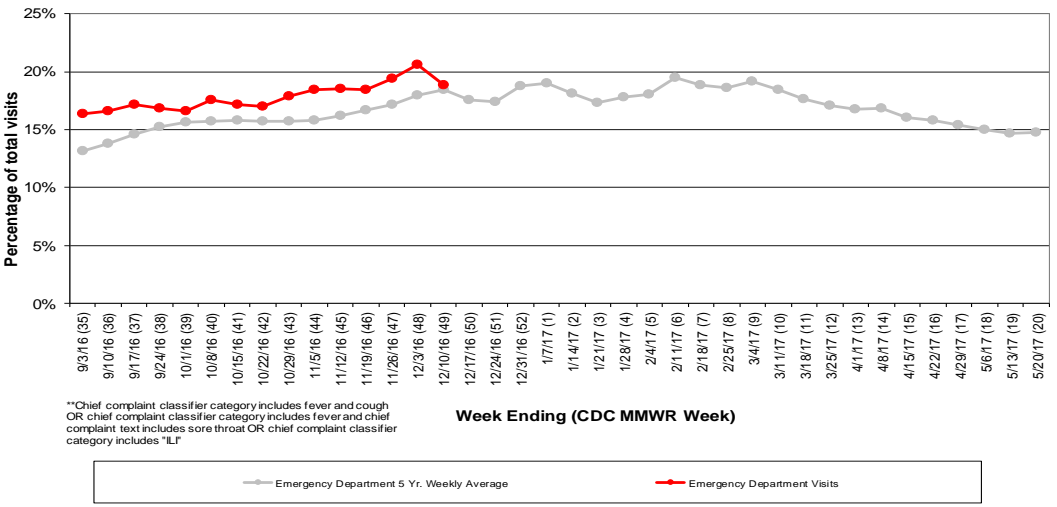
*Source: Medical Claims data from athenaHealth®
 Note: athenaHealth® claims data are subject to filing and processing time lags. Historical data are updated when they are received.

Figure 2: Percentage of Local Outpatient Participating Provider* and CDC National Outpatient Sentinel Health Care Provider Site visits for ILI and Associated Illnesses, 2016-17



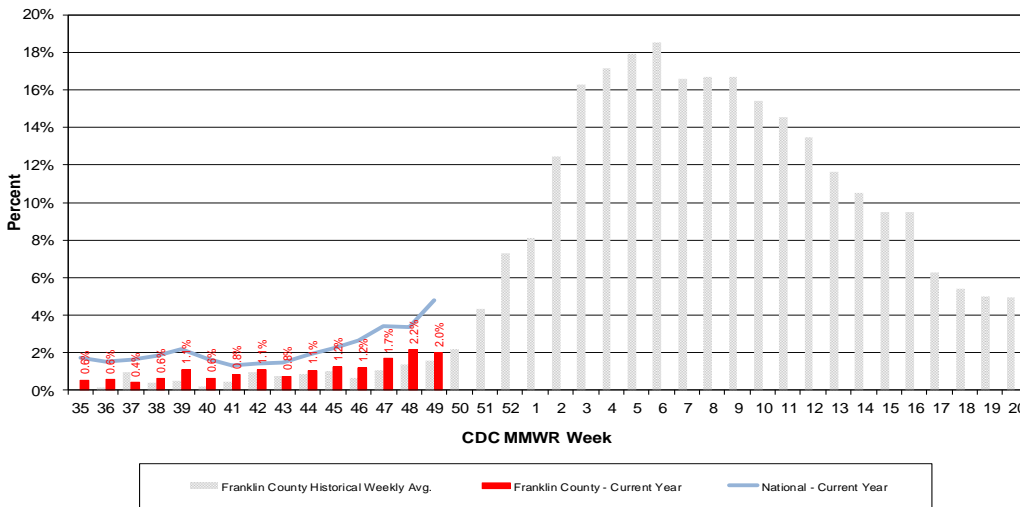
*Source: Local medical claims data provided by athenaHealth®
 Note: athenaHealth® claims data are subject to filing and processing time lags. Historical data are updated when they are received.

Figure 3: Franklin County Resident ILI Defined ED Visits, 2015-16, Franklin County, OH**



**Chief complaint classifier category includes fever and cough OR chief complaint classifier category includes fever and chief complaint text includes sore throat OR chief complaint classifier category includes "ILI"

Figure 4: Percentage of Local Reporting and National Laboratory Positive Influenza Tests by Week, 2016-17



Columbus & Franklin County Influenza Monitoring Summary – Week 49, 2016 (12/4/2016-12/10/2016)

Figure 5: Franklin County Resident Respiratory ED Visits, 2015-16, Franklin County, OH

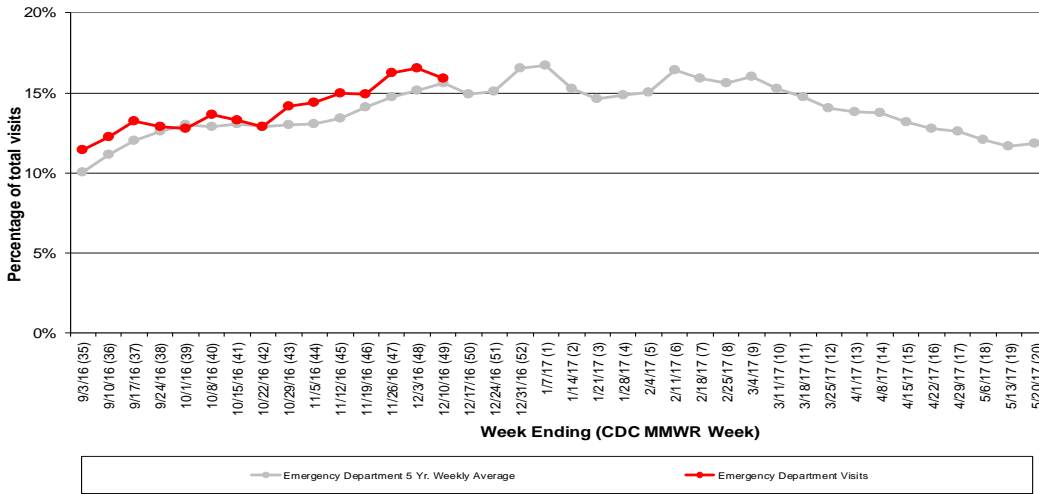


Figure 6: Selected Number of Over-the-Counter Medication Sales, 2015-16, Franklin County, OH

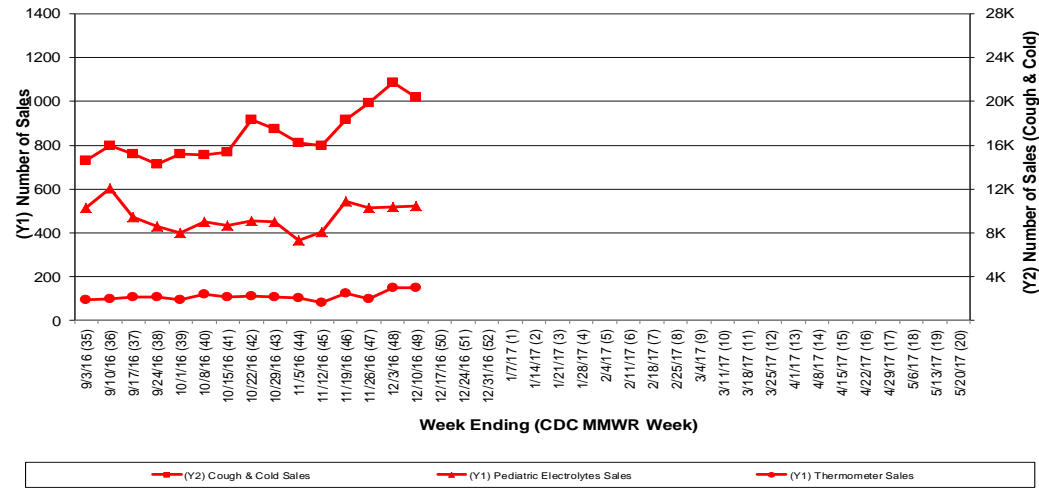
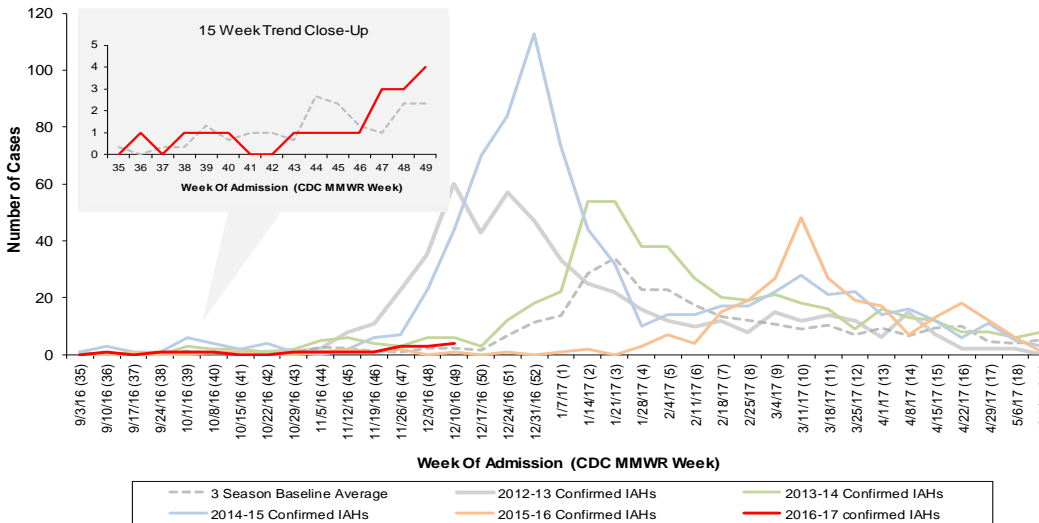


Figure 7: Franklin County Confirmed Influenza Associated Hospitalizations by Hospital Admission Week (As of 12/16/2016)



Franklin County, OH, Confirmed Influenza Hospitalization Cumulative Rates (per 100,000) by Age-Group and Admission Week, 2016-2017 Season

