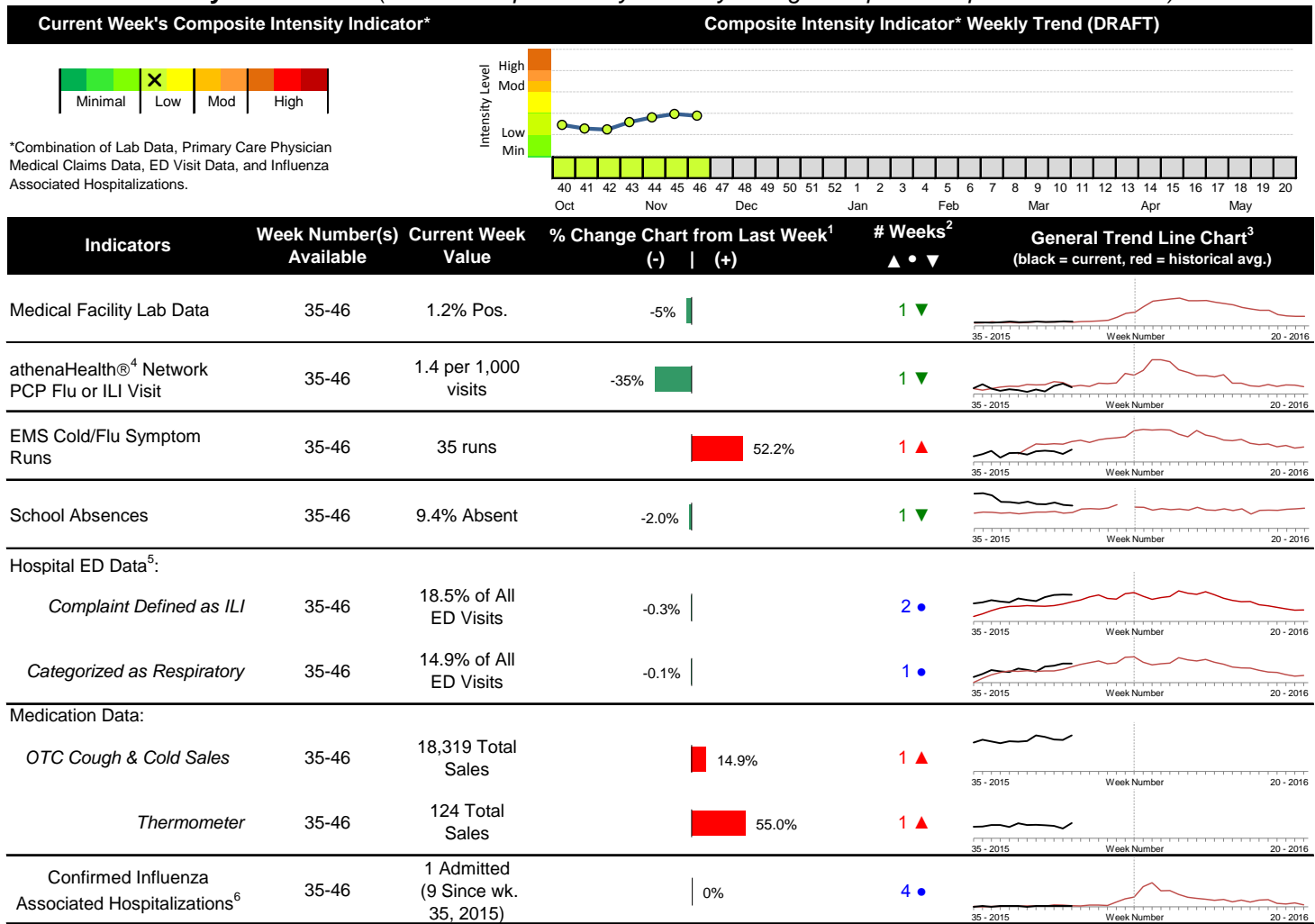


Highlights

- In week 46 of 2016, the individual local flu activity indicator trends were mixed. As a whole, flu intensity was low and was similar to last week.
- Geographic spread and local intensity designation (Click [here](#) for definitions) = SPORADIC, LOW
- Local medical facility labs reported 1,012 tests run with 12 (1.19%) positive results for week 46 of 2016. This is slightly lower than last week's 1.24% and is higher than the weekly baseline.
- The percentage of ED visits for both influenza-like-illness (ILI) and respiratory symptoms were stable compared to week 45. The percentage of ED visits for both ILI and respiratory symptoms are higher than their respective baseline averages for the week.
- In week 46 of 2016, the trends for all categories of local over-the-counter medication sales tracked were higher (increase in cough and cold, electrolyte, thermometer, chest rub, pediatric anti-fever, adult anti-fever sales, and throat lozenge sales) compared to last week.
- Updated U.S. influenza activity was not available at the time of this report. Please [visit the CDC website for specific information](#) (National data is usually updated on Friday of each week).

Local Flu Activity Dashboard (All data are preliminary and may change as updated reports are received.)



Reportable Conditions (Cumulative Numbers as of Nov. 20, 2016)	2011	2012	2013	2014	2015	2016 YTD
Pediatric Influenza Associated Death Reported by Year (based on date of death)	0	0	0	0	0	0
Influenza Associated Hospitalizations (IAH) Reported by Admission Year ⁶	266	394	301	928	510	274
IAH comparison by Season (October - May or Weeks 35 - 20)	2011-12	2012-13	2013-14	2014-15	2015-16	2016-17
Current season (2016-17) is from week 35 through 46.	95	512	486	987	263	9

¹Interpret with caution. Indicators with small numbers subject to large weekly percentage fluctuations.
²Number of weeks "▲" = Increase (>2%), "▼" = Decrease (>2%), "●" = Stable (-2% to +2%).
³Black line is current years data. Based on data availability, red line is historical average (excluding pandemic year).
⁴Data Source: Medical claims data from athenaHealth® (www.athenahealth.com). Rate of Flu or ILI visits to Franklin County, OH athenaHealth® network primary care practices/physicians. Claims data are subject to filing and processing time lags. Historical data are updated when they are received.
⁵Franklin County, OH residents only (based on zipcode). NOTE: Excludes one hospital system included in the past due to technical changes affecting visit classification assignment and numbers.
⁶Confirmed cases only. Based on jurisdiction equal to Franklin County or City of Columbus and admission date available in ODRS.

Influenza Morbidity and Influenza-Like Illness (ILI) Reports

In week 46, the preliminary local influenza and influenza-like-illness (ILI) visit rate to athenaHealth® providers (1.4 per 1,000 visits) decreased compared to the previous week and is similar to its baseline average for the week (Figure 1). The week 46 percentage of all Emergency Department (ED) visits categorized as ILI was stable compared to the previous week (Figure 3) and is higher than its historic baseline for the week.

Updated week 46 National outpatient influenza-like illness (ILI) data from ILINet was not available at the time of this report.

Laboratory Surveillance

During week 46 of 2016, reporting Franklin County sentinel medical facility laboratories tested 1,012 specimens, with 12 (1.19%) positive (Figure 4). The total number of tests done by local reporting labs from week 35 of 2016 through week 46 of 2016 is 7,836 with 71 (0.91%) positives (24 type A, 46 type B, 1 type A and B, 0 type unknown).

Updated week 46 National clinical and public health laboratory data was not available at the time of this report. Please visit the CDC website for more information, including cumulative data since week 40.

In week 46 of 2016, participating Ohio clinical labs reported 7,210 specimens tested for influenza this season thus far. Positive results include: (0) A(H1N1)pdm09; (3) A/H3N2; (27) Flu A Not Subtyped, and (20) Flu B (through 11/19/16). ODH Public Health Lab reported 66 specimens tested for influenza from various submitters this season thus far. Positive results include: (0) A(H1N1)pdm09; (8) A/H3N2; (1) Influenza B (through 11/19/16). Please visit the ODH website for more information.

ED Respiratory Visits

In the 46th week of 2016, the percentage of all ED visits categorized as respiratory was stable compared to the percentage seen the previous week and is slightly higher than its historic baseline for the week (Figure 5).

Over-the-Counter (OTC) Medication Sales

In week 46 of 2016, the trends for all categories of local over-the-counter medication sales tracked increased (increase in cough and cold, electrolyte, thermometer, chest rub, pediatric anti-fever, adult anti-fever sales, and throat lozenge sales) compared to last week.

Additional Influenza Activity Web Links:

Ohio Seasonal Flu Surveillance: <http://www.odh.ohio.gov/features/odhfeatures/seasflu/ohfluactivity.aspx>

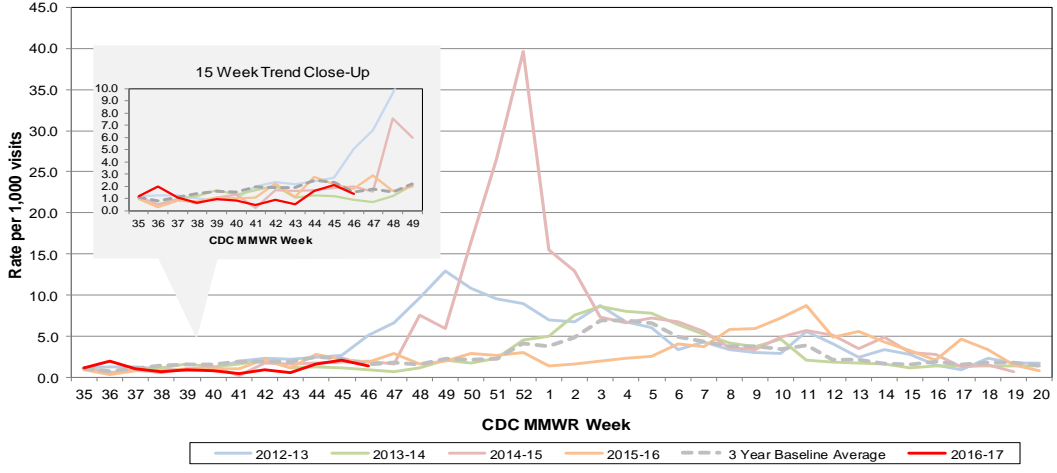
CDC National Seasonal Flu Surveillance Reports: <http://www.cdc.gov/flu/weekly/>

CDC International Flu Activity Map: <http://www.cdc.gov/flu/international/activity.htm>

World Health Organization Situation Updates: http://www.who.int/influenza/surveillance_monitoring/en/

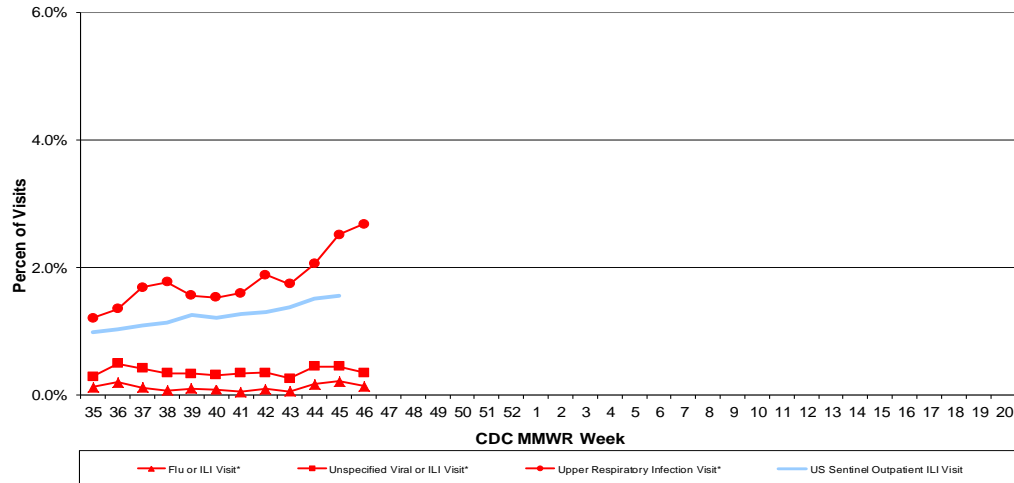
Columbus & Franklin County Influenza Monitoring Summary – Week 46, 2016 (11/13/2016-11/19/2016)

Figure 1: Local Participating Outpatient Primary Care Provider Influenza or Influenza-Like Illness Visit Rate*, Franklin County, OH



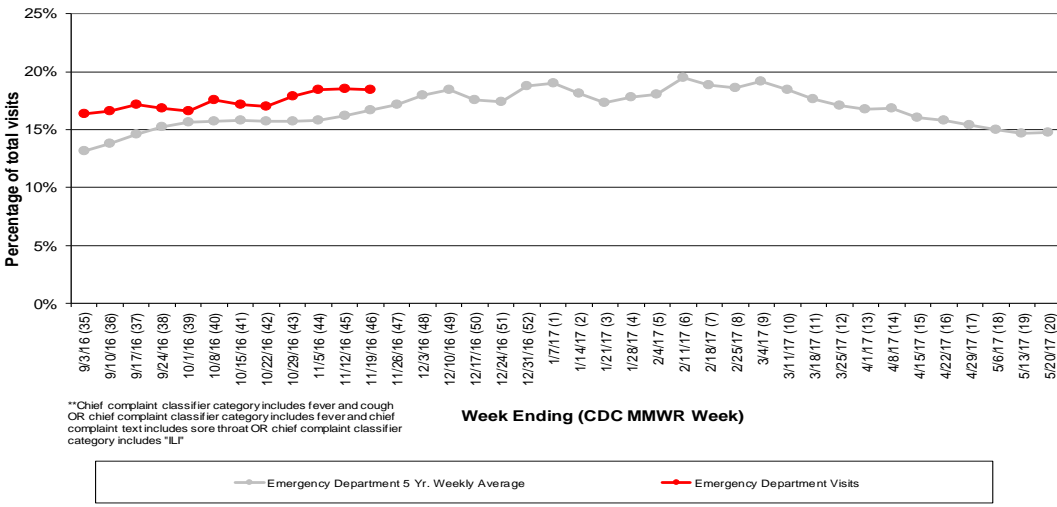
*Source: Medical Claims data from athenaHealth®
 Note: athenaHealth® claims data are subject to filing and processing time lags. Historical data are updated when they are received.

Figure 2: Percentage of Local Outpatient Participating Provider* and CDC National Outpatient Sentinel Health Care Provider Site visits for ILI and Associated Illnesses, 2016-17



*Source: Local medical claims data provided by athenaHealth®
 Note: athenaHealth® claims data are subject to filing and processing time lags. Historical data are updated when they are received.

Figure 3: Franklin County Resident ILI Defined ED Visits, 2015-16, Franklin County, OH**

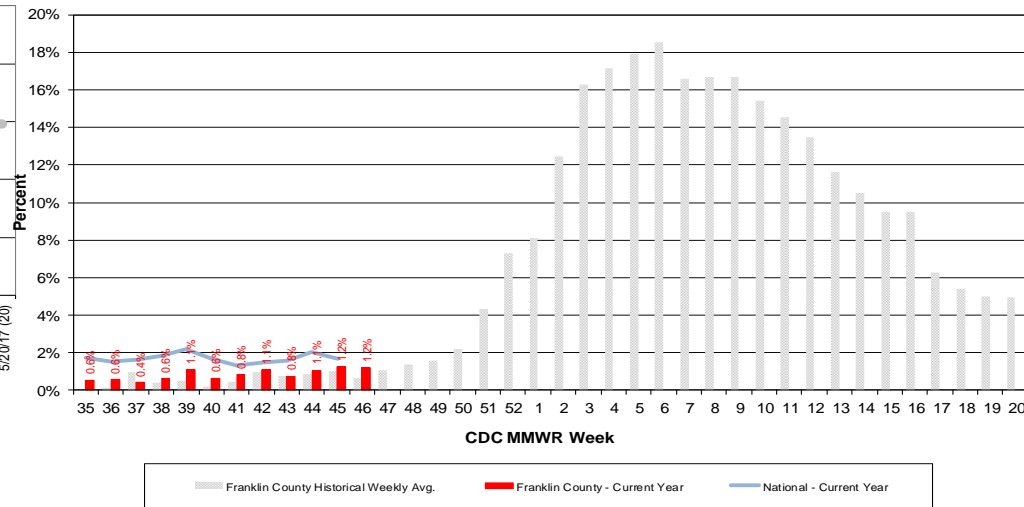


**Chief complaint classifier category includes fever and cough OR chief complaint classifier category includes fever and chief complaint text includes sore throat OR chief complaint classifier category includes "ILI"

Week Ending (CDC MMWR Week)

Emergency Department 5 Yr. Weekly Average Emergency Department Visits

Figure 4: Percentage of Local Reporting and National Laboratory Positive Influenza Tests by Week, 2016-17



Columbus & Franklin County Influenza Monitoring Summary – Week 46, 2016 (11/13/2016-11/19/2016)

Figure 5: Franklin County Resident Respiratory ED Visits, 2015-16, Franklin County, OH

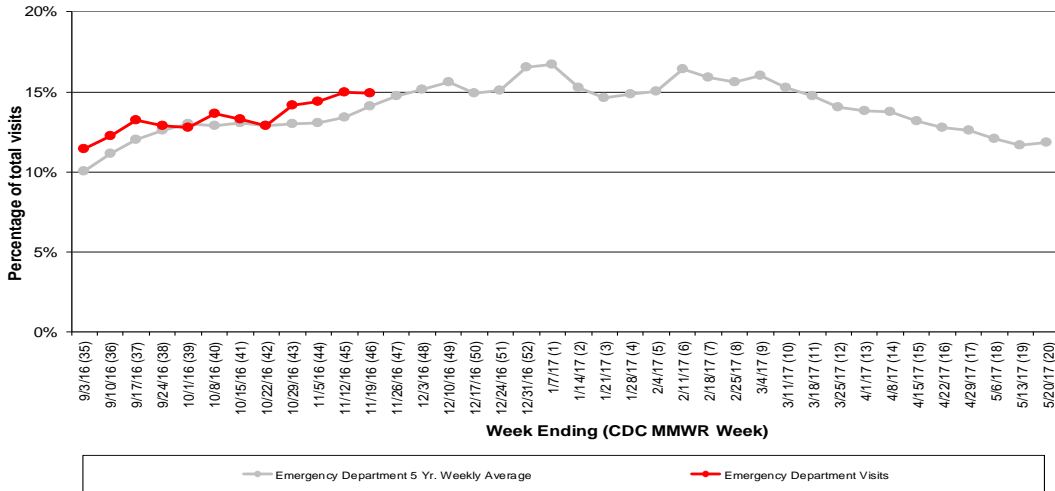


Figure 6: Selected Number of Over-the-Counter Medication Sales, 2015-16, Franklin County, OH

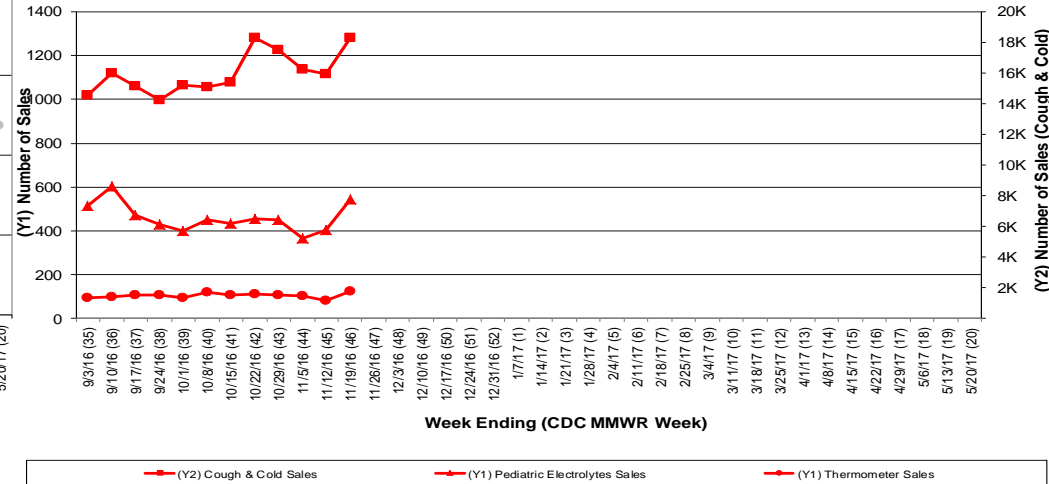
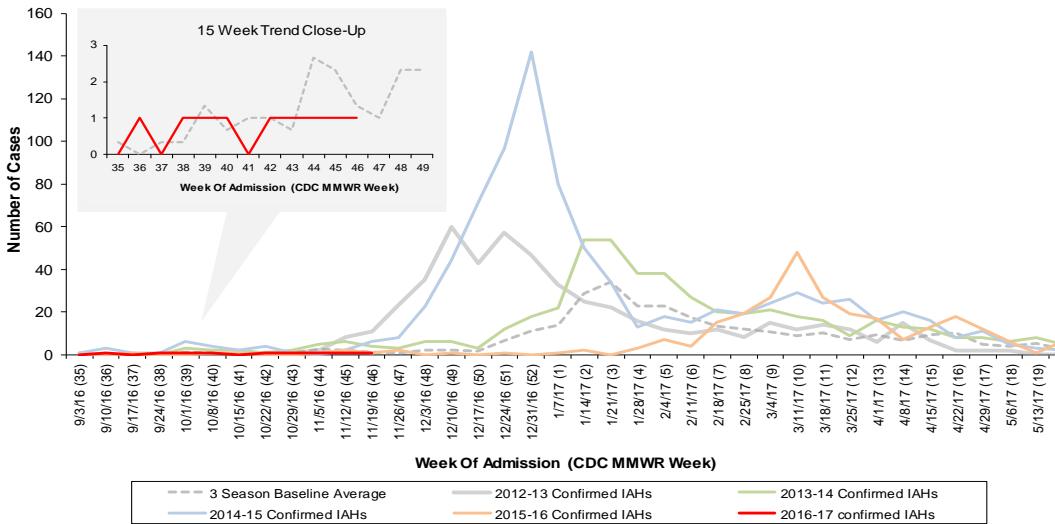


Figure 7: Franklin County Confirmed Influenza Associated Hospitalizations by Hospital Admission Week (As of 11/20/2016)



Franklin County, OH, Confirmed Influenza Hospitalization Cumulative Rates (per 100,000) by Age-Group and Admission Week, 2016-2017 Season

