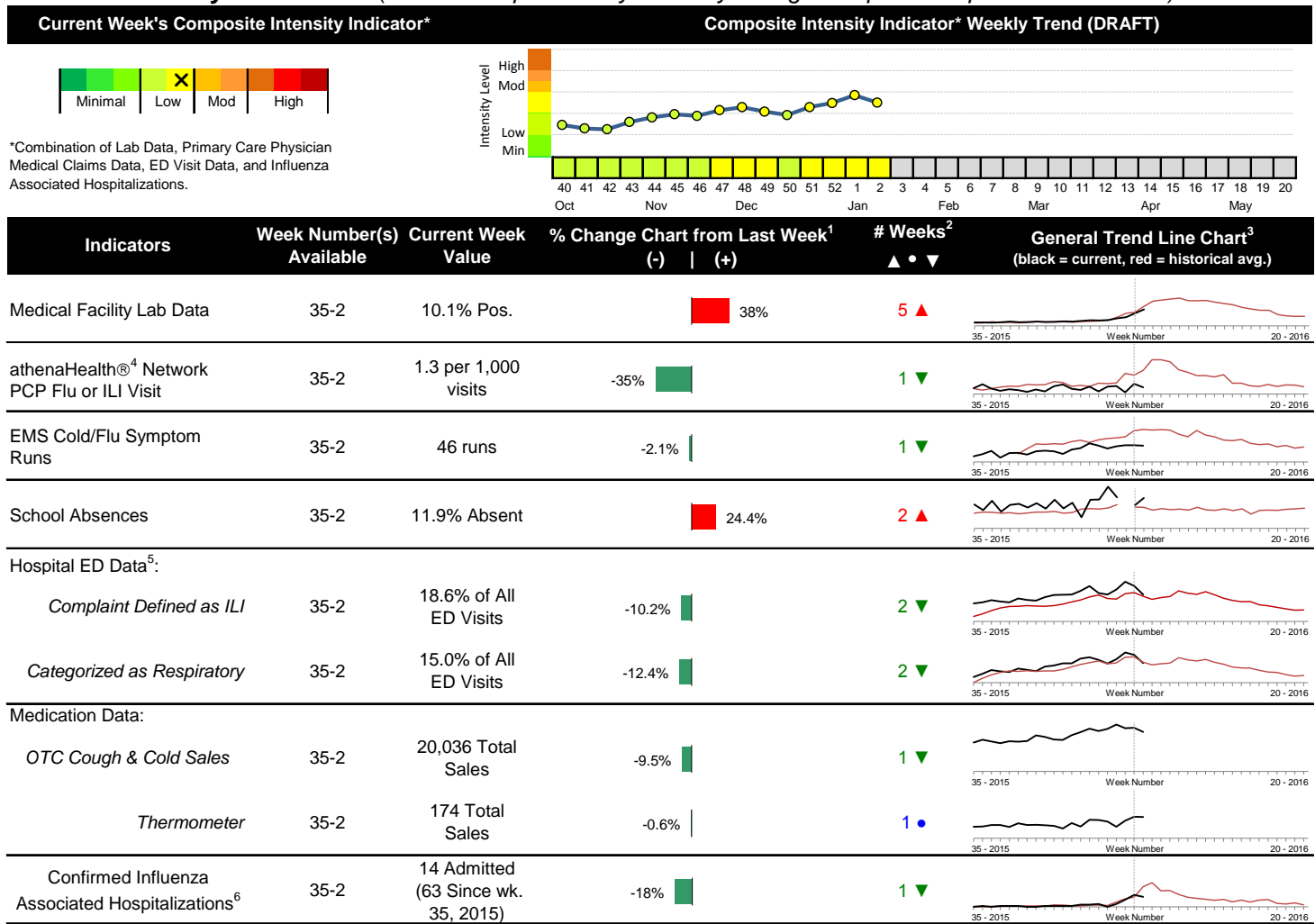


### Highlights

- In week 2 of 2017, although the majority of individual local flu activity indicator trends decreased, the percent laboratory positives for flu continued to increase. As a whole, flu intensity was low and decreased compared to last week.
- Geographic spread and local intensity designation (Click [here](#) for definitions) = WIDESPREAD, LOW
- Local medical facility labs reported 1,322 tests run with 134 (10.1%) positive results for week 2 of 2017. This is higher than last week's 7.3% and is slightly lower than the weekly baseline.
- The percentage of ED visits for influenza-like-illness (ILI) and respiratory symptoms both decreased compared to last week. The percentage of ED visits for both ILI and respiratory symptoms are close to their respective baseline averages for the week.
- In week 2 of 2017, the majority of the trends for categories of local over-the-counter medication sales tracked decreased (decrease in cough and cold, chest rub, pediatric anti-fever, adult anti-fever, and throat lozenge sales; stable electrolyte and thermometer sales) compared to last week.
- Nationally, influenza activity increased in week 2. Please [visit the CDC website for specific information](#) (National data is usually updated on Friday of each week).

### Local Flu Activity Dashboard (All data are preliminary and may change as updated reports are received.)



Reportable Conditions (Cumulative Numbers as of Jan. 19, 2017)	2012	2013	2014	2015	2016	2017 YTD
Pediatric Influenza Associated Death Reported by Year (based on date of death)	0	0	0	0	0	0
Influenza Associated Hospitalizations (IAH) Reported by Admission Year <sup>6</sup>	394	301	875	449	298	45
IAH comparison by Season (October - May or Weeks 35 - 20)	2011-12	2012-13	2013-14	2014-15	2015-16	2016-17
Current season (2016-17) is from week 35 through week 2.	95	512	486	873	264	63

<sup>1</sup>Interpret with caution. Indicators with small numbers subject to large weekly percentage fluctuations.  
<sup>2</sup>Number of weeks "▲" = Increase (>2%), "▼" = Decrease (>2%), "●" = Stable (-2% to +2%).  
<sup>3</sup>Black line is current years data. Based on data availability, red line is historical average (excluding pandemic year).  
<sup>4</sup>Data Source: Medical claims data from athenaHealth® (www.athenahealth.com). Rate of Flu or ILI visits to Franklin County, OH athenaHealth® network primary care practices/physicians. Claims data are subject to filing and processing time lags. Historical data are updated when they are received.  
<sup>5</sup>Franklin County, OH residents only (based on zipcode). NOTE: Excludes one hospital system included in the past due to technical changes affecting visit classification assignment and numbers.  
<sup>6</sup>Confirmed cases only. Based on jurisdiction equal to Franklin County or City of Columbus and admission date available in ODRS.

## **Influenza Morbidity and Influenza-Like Illness (ILI) Reports**

In week 2, the preliminary local influenza and influenza-like-illness (ILI) visit rate to athenaHealth® providers (1.3 per 1,000 visits) decreased compared to the previous week and is below its baseline average for the week (Figure 1). The week 2 percentage of all Emergency Department (ED) visits categorized as ILI decreased compared to the previous week (Figure 3) and is close to its historic baseline for the week.

Nationally, during week 2 of 2016, 3.3% of patient visits reported through ILINet were due to influenza-like illness (ILI). The percentage is above the national baseline of 2.2% for week 2.

## **Laboratory Surveillance**

During week 2 of 2017, reporting Franklin County sentinel medical facility laboratories tested 1,322 specimens, with 134 (10.1%) positive (Figure 4). The total number of tests done by local reporting labs from week 35 of 2016 through week 2 of 2017 is 16,777 with 470 (2.8%) positives (328 type A, 138 type B, 4 type A and B, 0 type unknown).

Nationally in week 2 of 2017, clinical laboratories reported 27,805 specimens tested for influenza viruses, 4,258 (15.3%) of which were positive (3,916 type A, 342 type B). Public health laboratories reported testing 1,761 specimens, 875 of which were positive (824 type A – of which 16 were A(H1N1)pdm09, 761 were A/H3, and 47 were not subtyped; 51 type B – of which 21 were Yamagata lineage, 10 were Victoria lineage, and 20 where lineage was not performed). Please visit the CDC website for more information, including cumulative data since week 40.

In week 2 of 2017, participating Ohio clinical labs reported 20,920 specimens tested for influenza this season thus far. Positive results include: (0) A(H1N1)pdm09; (69) A/H3N2; (596) Flu A Not Subtyped, and (92) Flu B (through 1/14/17). ODH Public Health Lab reported 182 specimens tested for influenza from various submitters this season thus far. Positive results include: (0) A(H1N1)pdm09; (83) A/H3N2; (9) Influenza B (through 1/14/17). Please visit the ODH website for more information.

## **ED Respiratory Visits**

In the 2<sup>nd</sup> week of 2017, the percentage of all ED visits categorized as respiratory decreased compared to the percentage seen the previous week and is close to its historic baseline for the week (Figure 5).

## **Over-the-Counter (OTC) Medication Sales**

In week 2 of 2017, the majority of the trends for categories of local over-the-counter medication sales tracked decreased (decrease in cough and cold, chest rub, pediatric anti-fever, adult anti-fever, and throat lozenge sales; stable electrolyte and thermometer sales) compared to last week.

## **Additional Influenza Activity Web Links:**

Ohio Seasonal Flu Surveillance: <http://www.odh.ohio.gov/features/odhfeatures/seasflu/ohfluactivity.aspx>

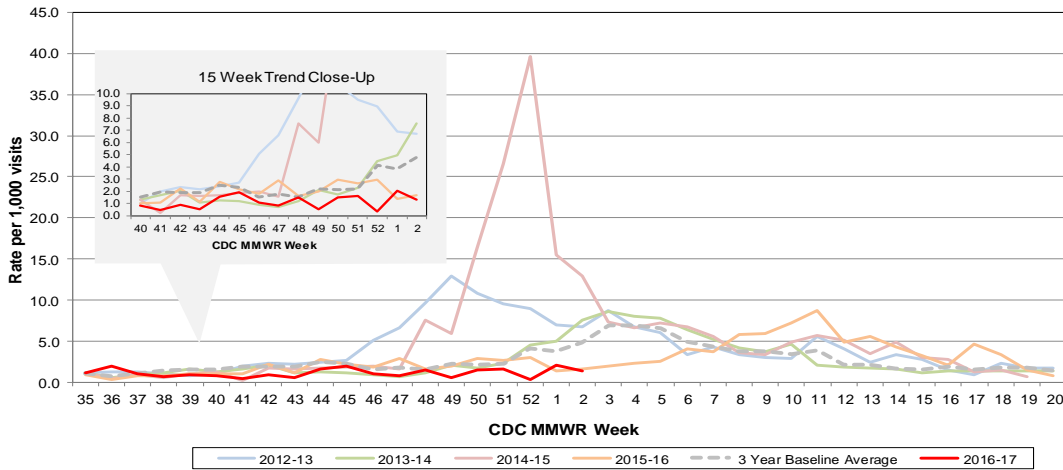
CDC National Seasonal Flu Surveillance Reports: <http://www.cdc.gov/flu/weekly/>

CDC International Flu Activity Map: <http://www.cdc.gov/flu/international/activity.htm>

World Health Organization Situation Updates: [http://www.who.int/influenza/surveillance\\_monitoring/en/](http://www.who.int/influenza/surveillance_monitoring/en/)

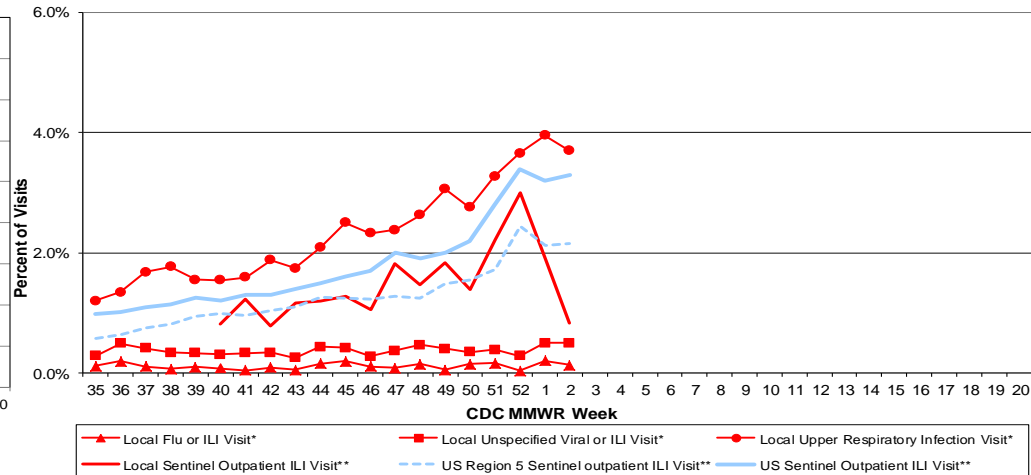
# Columbus & Franklin County Influenza Monitoring Summary – Week 2, 2017 (1/8/2017-1/14/2017)

**Figure 1: Local Participating Outpatient Primary Care Provider Influenza or Influenza-Like Illness Visit Rate\*, Franklin County, OH**



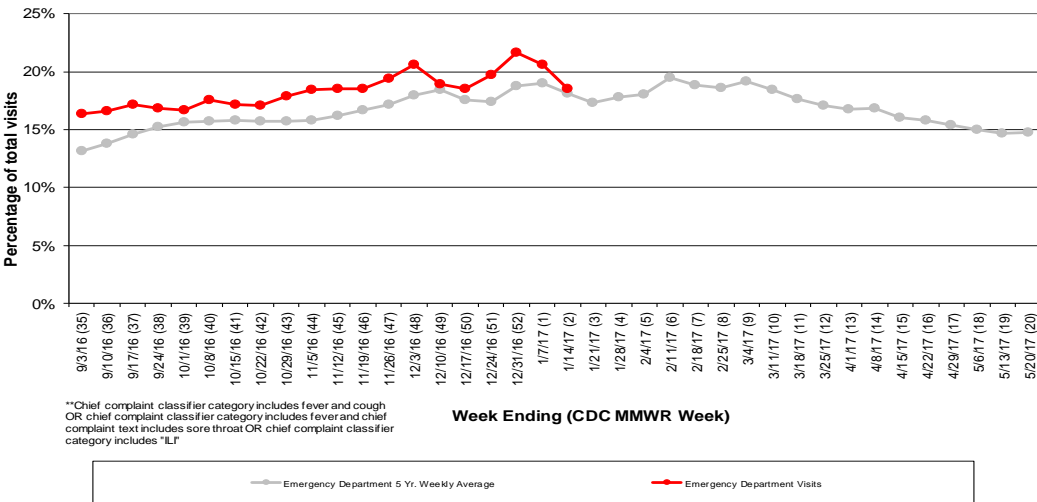
\*Source: Medical Claims data from athenaHealth®  
 Note: athenaHealth® claims data are subject to filing and processing time lags. Historical data are updated when they are received.

**Figure 2: Percentage of Local Outpatient Participating Provider\* and CDC National Outpatient Sentinel Health Care Provider\*\* Site visits for ILI and Associated Illnesses, 2016-17**



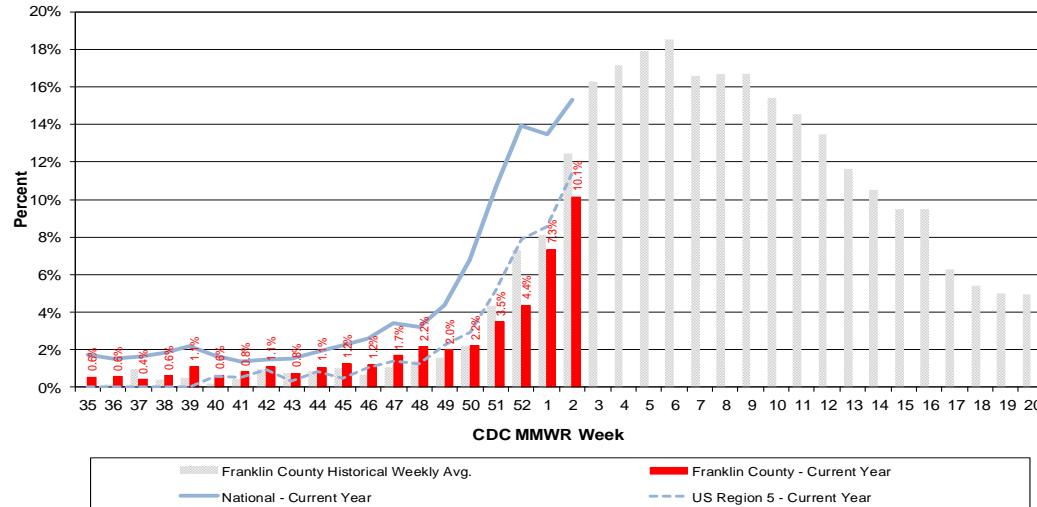
\*Source: Local medical claims data provided by athenaHealth®. Data are subject to filing and processing time lags. Historical data are updated when received.  
 \*\*Source: U.S. Outpatient Influenza-like Illness Surveillance Network (ILINet) sentinel provider visits

**Figure 3: Franklin County Resident ILI Defined\*\* ED Visits, 2015-16, Franklin County, OH**



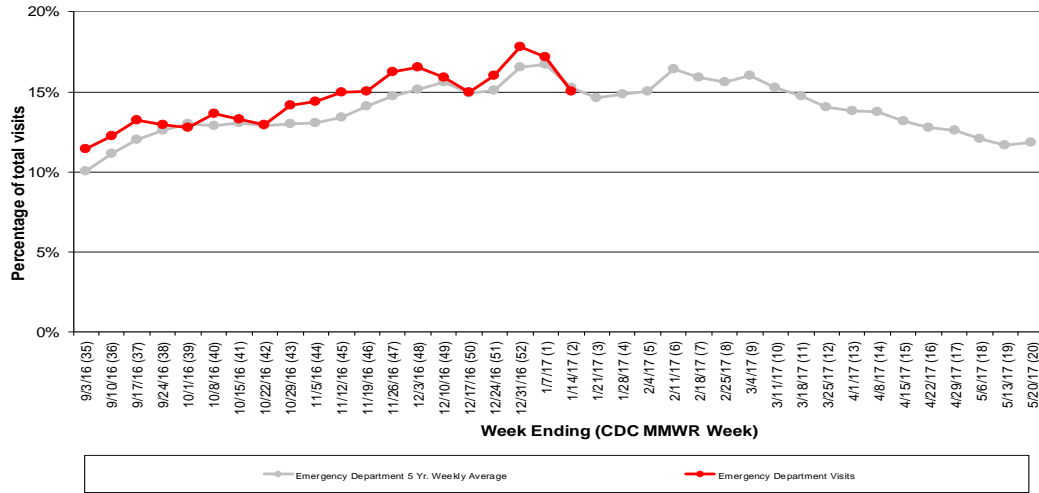
\*\*Chief complaint classifier category includes fever and cough  
 OR chief complaint classifier category includes fever and chief complaint text includes sore throat OR chief complaint classifier category includes "ILI"

**Figure 4: Percentage of Local Reporting and National Laboratory Positive Influenza Tests by Week, 2016-17**

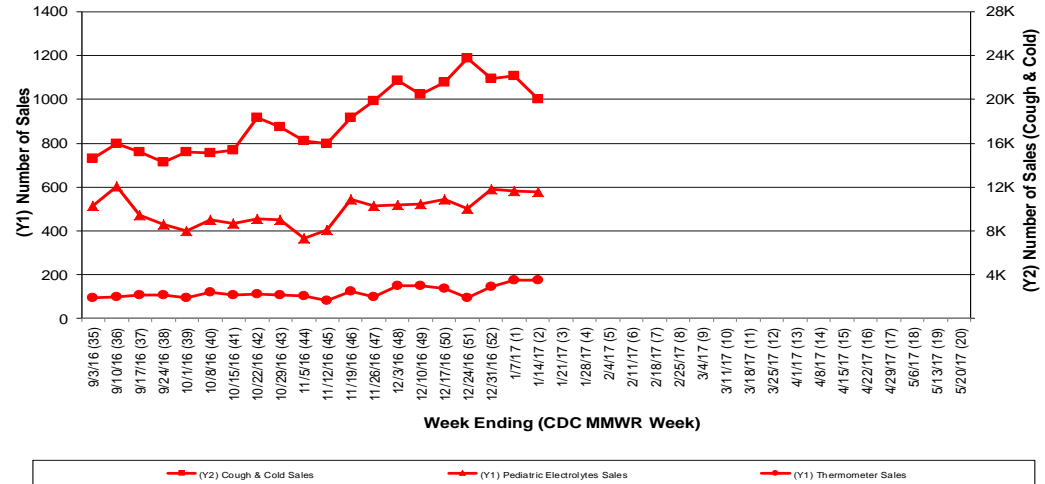


## Columbus & Franklin County Influenza Monitoring Summary – Week 2, 2017 (1/8/2017-1/14/2017)

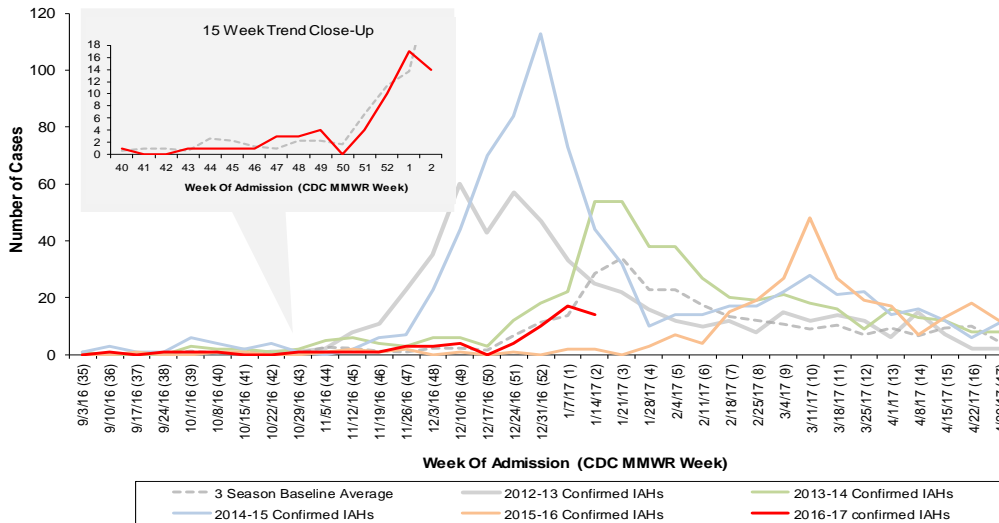
**Figure 5: Franklin County Resident Respiratory ED Visits, 2015-16, Franklin County, OH**



**Figure 6: Selected Number of Over-the-Counter Medication Sales, 2015-16, Franklin County, OH**



**Figure 7: Franklin County Confirmed Influenza Associated Hospitalizations by Hospital Admission Week (As of 1/19/2017)**



**Franklin County, OH, Confirmed Influenza Hospitalization Cumulative Rates (per 100,000) by Age-Group and Admission Week, 2016-2017 Season**

